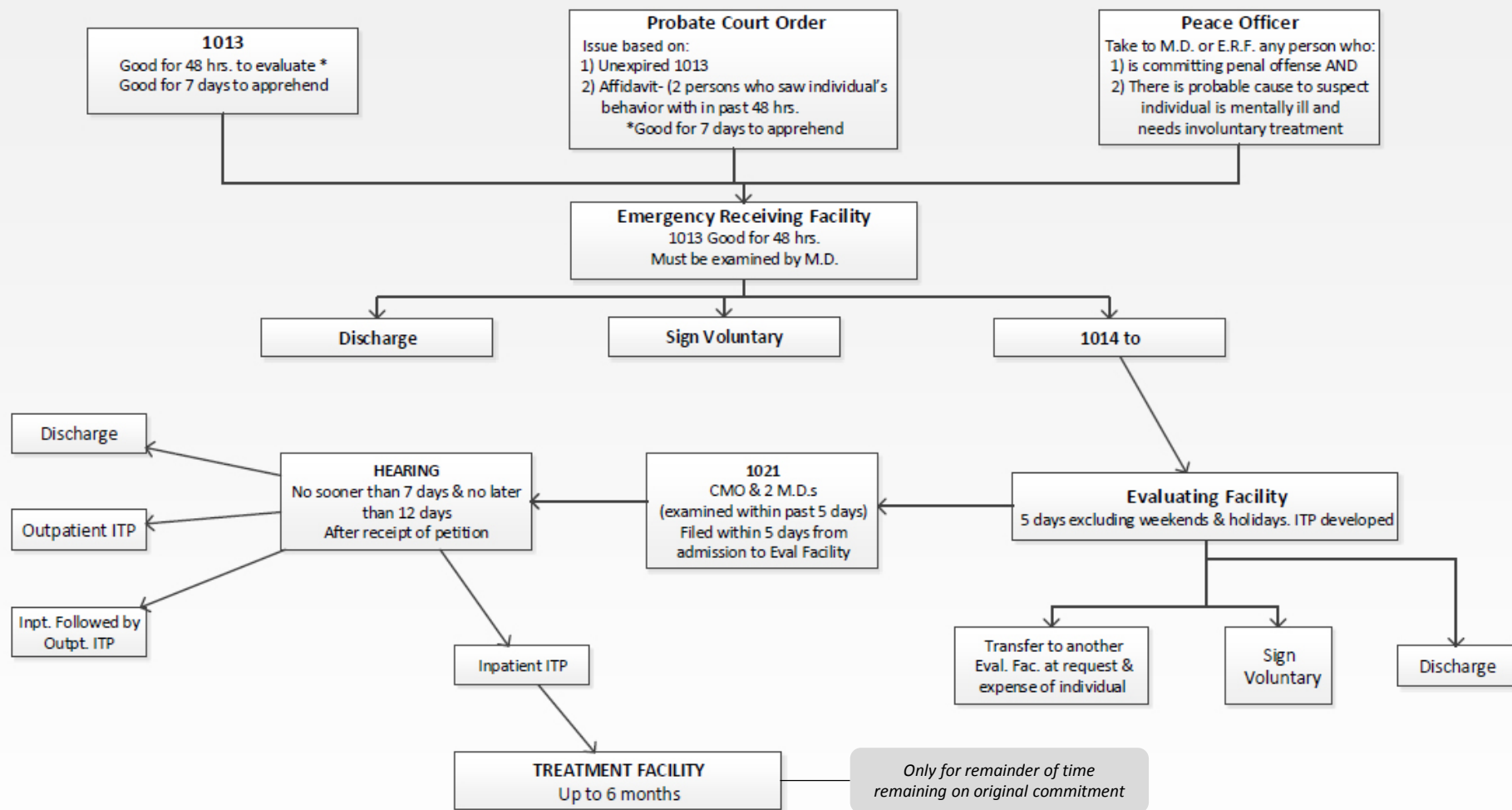


EMERGENCY ADMISSION PROCESS MAP

INVOLUNTARY CARE DECISION TREE Applicable to Georgia's Emergency Receiving, Evaluating and Treatment Facilities



**Note: If transfer from CSU to treatment facility is required for a hearing for involuntary care, this must occur by the third day of the five-day evaluation period*

**Georgia law permits 1013/2013 to be signed by a MD, psychologist, LCSW, LPC, APRN, PA, and CNS*