

DBHDD Community-Based Services
Awareness Initiative

DBHDD Region One

Adult Behavioral Health Services

As of

July 1, 2012

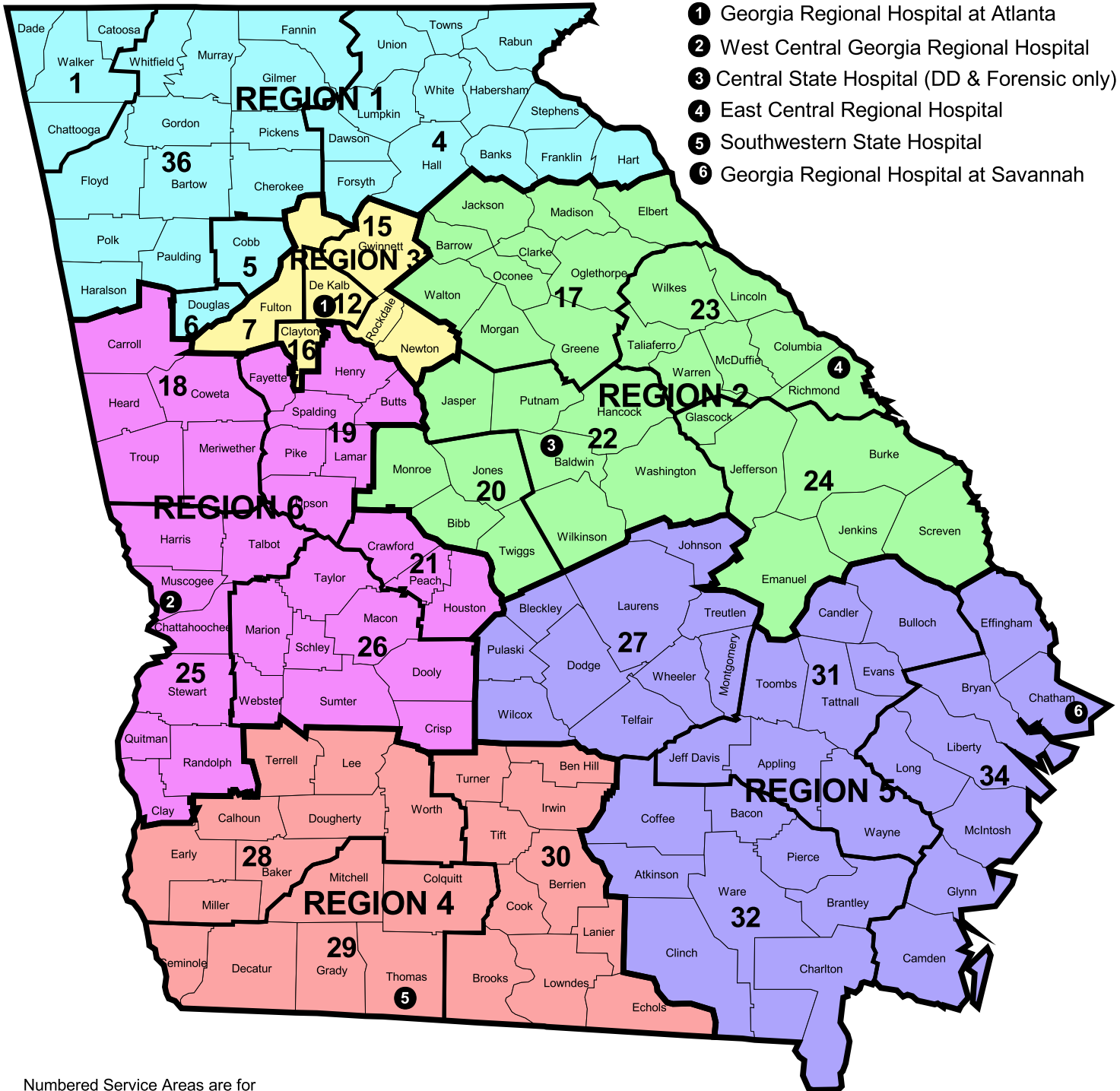
Georgia Department of Behavioral Health & Developmental Disabilities

Regional Map with Community Service Areas

Effective July 1, 2011

STATE HOSPITALS

- 1** Georgia Regional Hospital at Atlanta
- 2** West Central Georgia Regional Hospital
- 3** Central State Hospital (DD & Forensic only)
- 4** East Central Regional Hospital
- 5** Southwestern State Hospital
- 6** Georgia Regional Hospital at Savannah



Numbered Service Areas are for identification purposes only.

- | | | |
|--|--|---|
| <ul style="list-style-type: none"> 1 - Lookout Mountain Community Services 4 - Georgia Mountains Community Services 5 - Cobb Community Service Board 6 - Douglas Community Service Board 7 - Fulton County 12 - DeKalb Community Service Board 15 - GRN Community Service Board 16 - Clayton Community Service Board 17 - Advantage Behavioral Health Systems | <ul style="list-style-type: none"> 18 - Pathways Center for Behavioral & Developmental Growth 19 - McIntosh Trail Community Service Board 20 - River Edge Behavioral Health Center 21 - Phoenix Center Behavioral Health Services 22 - Oconee Community Service Board 23 - CSB of East Central Ga (Serenity Behavioral Health) 24 - Ogeechee Behavioral Health Services 25 - New Horizons Community Service Board 26 - Middle Flint Behavioral Healthcare | <ul style="list-style-type: none"> 27 - Community Service Board of Middle Georgia 28 - Albany Area Community Service Board 29 - Georgia Pines Community MHMRSAs Services 30 - Behavioral Health Services of South Georgia 31 - Pineland Area Community Service Board 32 - Satilla Community Service Board 34 - Gateway Community Service Board 36 - Highland Rivers Community Service Board |
|--|--|---|

Region One DBHDD Office

The Region One office for the Department of Behavioral Health and Developmental Disabilities (DBHDD) is one of six regional offices across the state.

The Region One office is an administrative field office of the Department of BHDD regional system. The purpose of the Regional Office is to develop a community based system of care and to oversee contracts and monitor the performance of providers who serve people needing treatment from the public sector mental illness or addictive diseases. It is envisioned that the community based system of care will be one that can meet the needs of the eligible people without out of home placement or having to access high-end inpatient programs. In addition, the Regional Office provides planning and coordination of its provider network, provides technical assistance, and serves as the point of contact for consumers who may have questions about the service system or if they are unable to access services.

Region One covers 31 counties in North Georgia. It has a Planning Board comprised of citizens from each of the counties. The Regional Planning Board is a volunteer Board. The main role of the Planning Board is to identify community needs and gaps in the current service system and to prepare a plan annually. The Regional Planning Board serves as the formal process for identifying needs and developing recommendations to the Department of DBHDD. Their role in gathering information and informing the State officials of the critical needs of the region is very important to the system.

The Region One office is currently located in Rome, Georgia.

DBHDD Region One Office

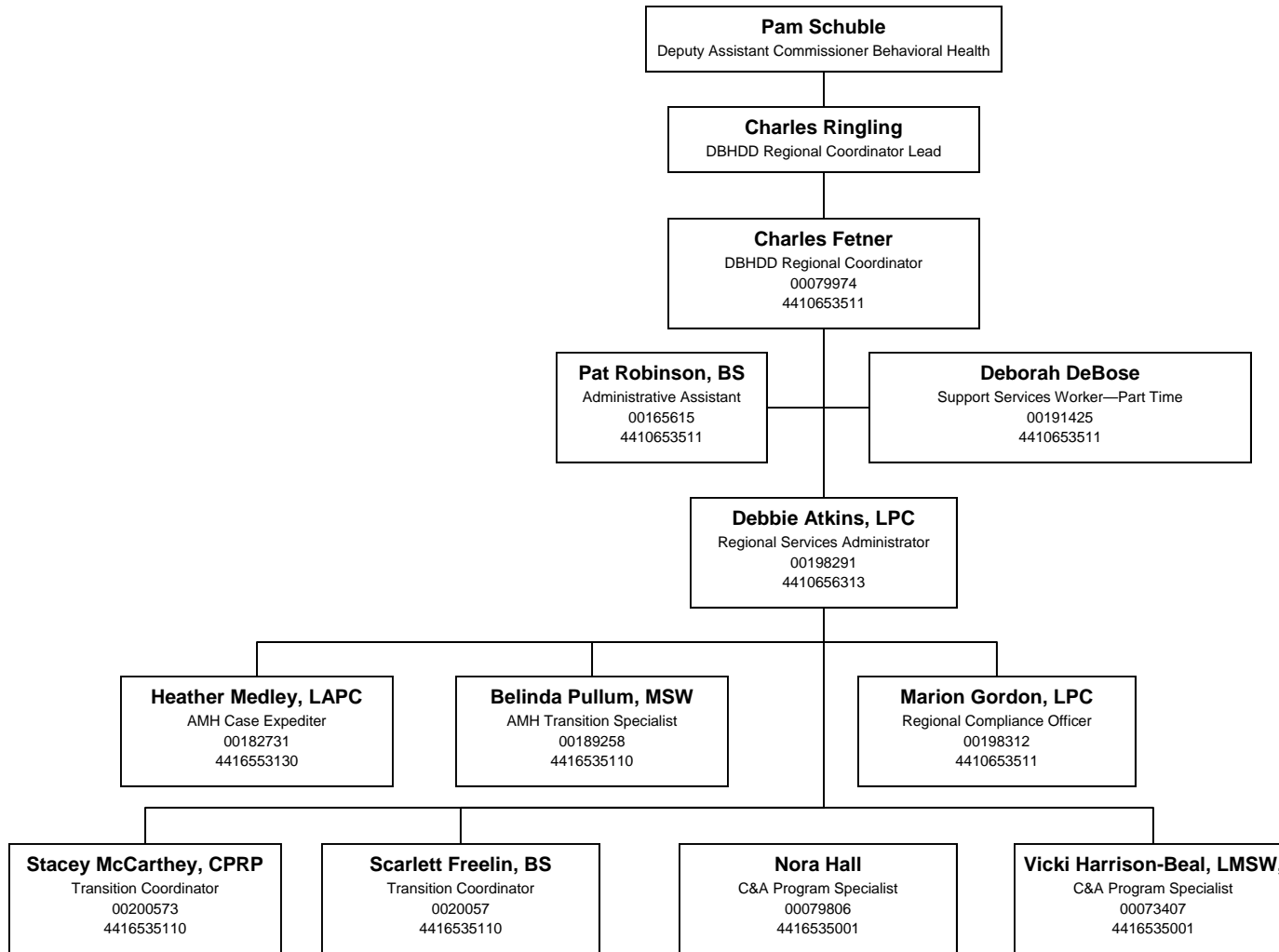
705 N Division Street

Building 104

Rome, Georgia 30165

706-802-5272

Department of Behavioral Health and Developmental Disabilities
Regional Operations / Region 1 Administration
July 1, 2012



Full Array of Behavioral Health Services

CORE Behavioral Health:

- Beh Health Assmt & Serv Plan Development
- Psychological Testing
- Diagnostic Assessment
- Crisis Intervention
- Psychiatric Treatment
- Nursing Assessment & Care
- Medication Administration
- Community Support
- Individual Outpatient Services
- Group Outpatient Services
- Family Outpatient Services
- Pharmacy

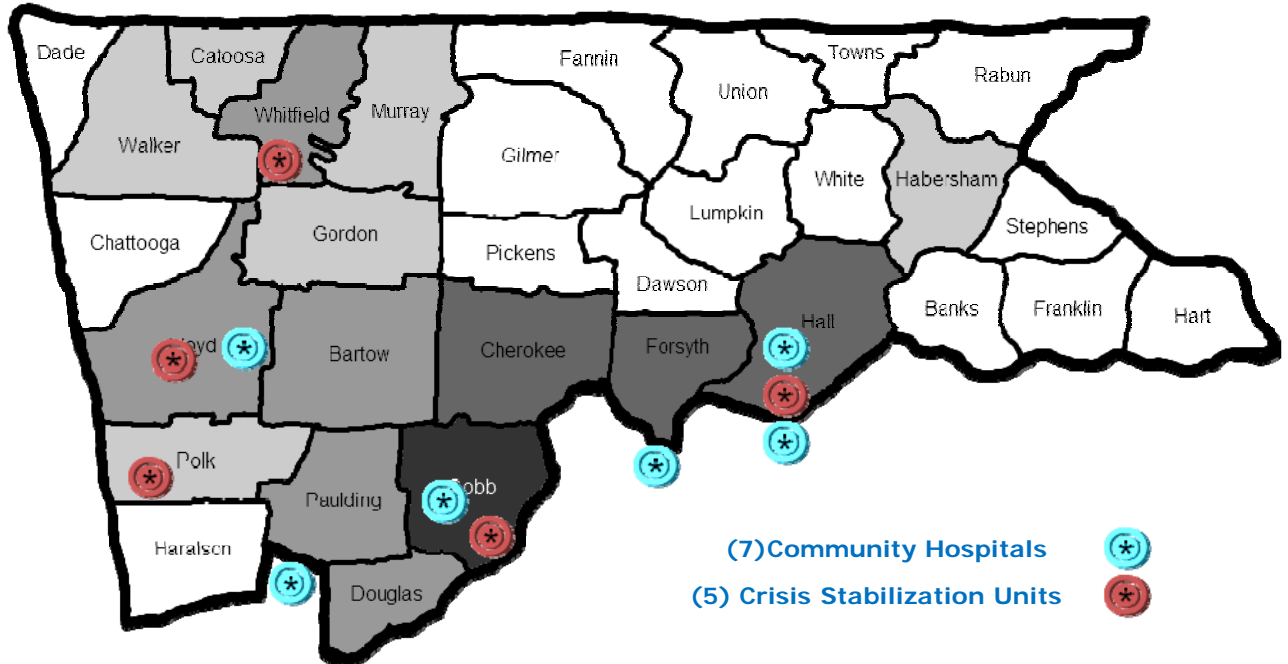
SPECIALTY Behavioral Health:

- Crisis Stabilization Program
- ACT
- Peer
- Respite
- CST
- PSSR
- CM
- ICM
- Supportive Employment
- Housing Vouchers
- Residential
- HIV

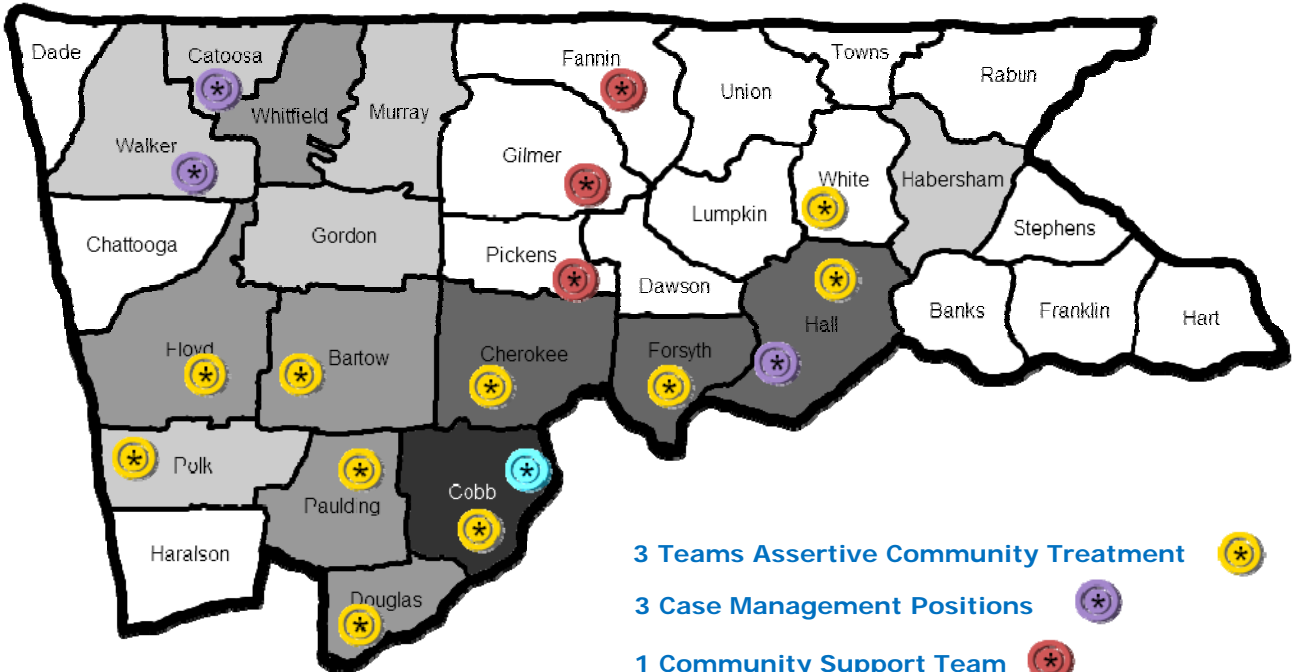
SPECIALTY Addictive Diseases:

- Detox
- Residential
- Intensive Outpatient
- Treatment Court
- Group

Region 1 Emergency Receiving Facilities July 1, 2012

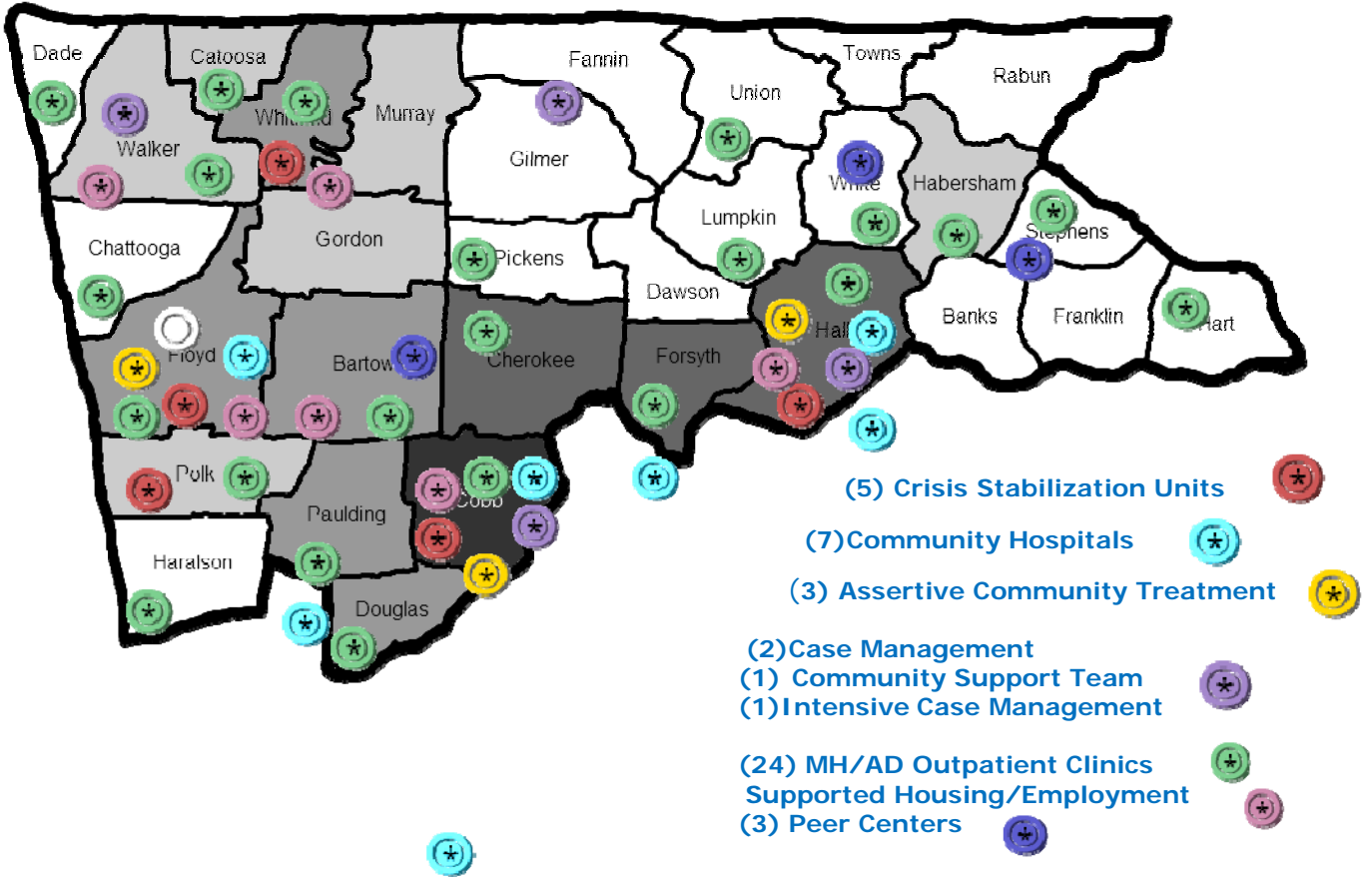


Region 1 Adult Behavioral Health Intensive Community Services July 1, 2012



- 3 Teams Assertive Community Treatment (yellow asterisk icon)
- 3 Case Management Positions (purple asterisk icon)
- 1 Community Support Team (red asterisk icon)
- 1 Intensive Case Management (cyan asterisk icon)

Region 1 Adult Behavioral Health Continuum of Care July 1, 2012



Service Descriptions:

Adult Core Services

The basic out-patient services for people with a serious mental illness or with an addictive disease. It consists of being evaluated by a psychiatrist and a nurse, and the development of a treatment plan. The treatment plan may include a prescription for medication, a schedule of appointments for out-patient counseling, supported employment, and home visits by a community service worker. These services are provided by 4 CSB's, 1 County Board of Health, and by 1 private provider.

Adult Crisis Stabilization Services

Services provided in residential settings to rapidly stabilize the behaviors and symptoms of a person in an acute phase of mental illness, or to provide detoxification services to people high on drugs or alcohol. People are usually discharged in 5 days or less and are referred to a Core Provider for out-patient services. There are 5 CSU's in Region One and they are operated by 3 CSB's. They have a combined capacity of 106 beds and admit an average of 430 people per month.

Adult In-patient Hospitalization Services

These are services for people whose behaviors or symptoms are too acute to be effectively managed in a CSU. These services are provided through contract with 7 private psychiatric hospitals. During the first quarter of this fiscal year, there has been an average of 150 admissions per month with an average daily census of 23 people. People being discharged from these hospitals are referred to a Core Provider for out-patient care.

Adult Residential Services

Services range from intensive treatment in a small residential setting with the goal of the person recovering to the point of moving to independent living; to providing rent supplements to help a person in recovery live as independently as possible. These include 3 group homes operated by 3 CSB's, to supporting people in HUD homes and Personal Care Homes. There are approximately 380 slots available that serve an estimated 500 people per year. These residential services are provided only by the 4 CSB's.

Housing Voucher's

To provide Supported Housing and Bridge Funding to persons with Serious and Persistent Mental Illness in the Settlement Agreement's Target Population. The Supported Housing will assist such individuals in attaining and maintaining safe and affordable housing and support their integration into the community. The program is designed to provide housing supports for approximately 2,000 tenants that are deemed ineligible for any other benefits.

Peer Support Services

This service provides structured activities within a peer support center that promote socialization, recovery, wellness, self-advocacy, development of natural supports, and maintenance of community living skills. Activities are provided between and among individuals, who have common issues and needs, are consumer motivated, initiated and/or managed, and assist individuals in living as independently as possible.

Supported Employment

In line with current best practice, this service emphasizes that a rapid job search and placement approach be prioritized above traditional prevocational training or traditional vocational rehabilitation. Job development, placement and training are for people who, due to the severity of their disabilities, need support to locate, choose, obtain, learn and maintain a job. Services include supports to choose and obtain paid employment in competitive wage, individual-based community jobs, as well as brief training support to learn the specific job skills/tasks necessary to perform and retain a particular job.

Assertive Community Treatment (ACT)

has all of the service types of a Core Provider except the building, and it has smaller case loads in order to provide more intense services in the person's community. Region One has three teams provided by 1 private contractor. The teams are based in Rome, Gainesville, and Marietta and operate within a 50 mile radius of each town. Each team can have a caseload of 100 people consisting of people with a serious mental illness and who are most at risk of re-hospitalization, or of being homeless or jailed are eligible for this service.

Intensive Case Management(ICM), Case Management(CM), and Community Service

Teams(CST) are other forms of community based care that goes to the person in their home or other places in the community to support their efforts to recovery. Caseloads are usually no more than 30 people per staff member. These services are an adjunct to the Core Services the person is receiving and are designed to help the person be successful in their community. ICM is provided by 1 CSB, CM is provided by a different CSB, as is CST.

Mobile Crisis Team (MCT)

A service that has staff on call 24/7 to respond to any crisis call that may be related to a mental illness or substance abuse issue. They conduct a face to face evaluation where ever the person is located and will make recommendations for further treatment if indicated. This service is available in 20 of the 31 counties of region One. It is provided by 1 private provider. It conducts an average of 100 evaluations per month.

EMERGENCY RECEIVING FACILITY

REGION 1 DBHDD

July 1, 2012

For Entrance into any of these Facilities Contact BHL 1800 715-4225

CSB or FACILITY SYSTEM PARENT ORGANIZATION	CSU PROGRAM NAME & ADDRESS	CSU DIRECTOR, MEDICAL DIRECTOR and CONTACT NUMBERS
Highland Rivers Community Service Board 1401 Applewood Dr Suite 1 Dalton, GA 30720	Treatment Services/Crisis Stabilization Program 900 Shugart Road Dalton, GA 30720	Ann H Davies LCSW, Dir anndavies@highlandrivers.org Steve Sisson RN stevesisson@highlandrivers.org 706-275-5107 706-270-5102 Fax Dr. Ujwal Siddam Reddy Medical Director
Highland Rivers Community Service Board 1401 Applewood Dr Suite 1 Dalton, GA 30720	Crisis Stabilization Program Residential Treatment Unit 180 Water Oak Drive Cedartown, GA 30125	Ann H. Davies, LCSW, Dir anndavies@highlandrivers.org Sherri Dunaway, ASN/RN sherriedunaway@highlandrivers.org 770-248-0030 770-748-0193Fax Dr. Nizamuddin Khaja Medical Director
High Rivers Community Service Board 1401 Applewood Dr Suite 1 Dalton, GA 30720	Rome Adult CSP 1 Woodbine Ave Rome, GA 30165	Ann H. Davies, LCSW, Dir anndavies@highlandrivers.org Penny Payne, Nurse Mgr. pennypayne@highlandrivers.org 706-314-0019 706-314-0343 Fax Dr. Joseph Kent Seal Medical Director
AVITA Community Partners CSB 4331 Thurmond Tanner Parkway Flowery Branch, GA 30542	AVITA Crisis Stabalizatoin Program 4331 Thurmond Tanner Parkway Flowery Branch, GA 30542	Roger Scott, Dir Roger.AScott@avitapartners.org Mary Donna Hall, Nurse Mgr 678-513-5700 678-513-5833Fax Dr. Karim Gokal Medical Director
Cobb County Community Service Board 3830 South Cobb Drive Suite 300 Smyrna, Georgia 30080	Cobb Stabilization Unit 5400 South Cobb Drive Smyrna, GA 30080	Gwen Watts, RN, MN Dir gwatts@cobbcsb.com 404-794-4857 770-630-0737 Fax Dr. Ronald Jackson, Medical Director
Private Hospital Program Name and address	Admissions: Contact Name, Position and Number	Clinical &/or Nurse Manager Contact Name and Number
Wellstar BHI	Call Center: 770-732-3789 Call Ctr. Lead: Trisha Velasco o) 770-732-3740 ©770-480-1847 trisha.velasco@wellstar.org	Pam Orr, Nurse Mgr. (o)770-732-6568 (c)678-296-3800 pamela.orr@wellsatr.org
Peachford	Admissions Director: Laura Naegele: 770-454-2357 laura.naegele@uhsinc.com	Nikki Ford, Clinical Svcs. 770-454-2327 404-863-8454 cell nikki.ford@uhsinc.com Rebecca Hayes, Supervising Dir. Cell# 678-898-4470
Summit Ridge	Chris Settel, LCSW Director of Assessment and Referral Services 678-442-5873 chris.settel@uhsinc.com	Shelley Beaubrun, RN MSN Director of Nursing 678-442-5903
Laurelwood	Paul Nelson LCSW, Intake Coordinator 770-219-6037 paul.nelson@nghs.com	Paula Swancey, RN Director of Clinical Services 770-219-6533 paula.swancey@nghs.com
Willowbrooke Tanner	Barbara Cheeves 770-456-3985 bcheeves@tanner.org Intake# 770-456-3995	Sharon Taylor, Nurse Mgr. 770-456-3935 staylor@tanner.org Natasha Ryles Dir. Of Nursing 770-456-3960 nryles@tanner.org
Anchor Hospital UHS of Anchor 5454 Yorktowne Dr Atlanta, Ga 30349-5317	Angela Thornell, Director of Assessments Telephone: 770-991-6044 email: angela.thornell@uhsinc.com	Dawn Buckley, Director of Clinical Services Dawn.buckley@uhsinc.com 770-991-6044

**DBHDD Region One
New Community Based Services
Since the Closure of NWGRH in Rome**

Adult MH/AD

Service	Start Date	Provider	Location	Area Covered
Crisis Stabilization Unit	April 1, 2011	Avita CSB	Gainesville	Region One
Crisis Stabilization Unit	June 6, 2011	Highland Rivers CSB	Rome	Region One
Inpatient Psychiatric Beds	April 11, 2011	Cobb-Wellstar	Austell	Region One
Inpatient Psychiatric Beds	July 1, 2011	Tanner	Carrollton	Region One
Inpatient Psychiatric Beds	July 1, 2011	Laurelwood	Gainesville	Region One
Inpatient Psychiatric Beds	July 1, 2011	Peachford	Dunwoody	Region One
Inpatient Psychiatric Beds	July 1, 2011	Summit Ridge	Lawrenceville	Region One
Inpatient Psychiatric Beds	November 23, 2011	Anchor	Atlanta	Region One
Inpatient Psychiatric Beds	November 23, 2011	Floyd Behavioral Health	Rome	Region One
Assertive Community Treatment Teams (ACT)	June 1, 2011	Anka	Rome	Bartow, Floyd, Paulding, Polk
Assertive Community Treatment Teams (ACT)	June 1, 2011	Anka	Gainesville	Hall, Lumpkin, White
Assertive Community Treatment Teams (ACT)	June 1, 2011	Anka	Marietta	Cobb
Intensive Case Management	June 1, 2011	Cobb/Douglas CSB	Smyrna	Cherokee, Cobb, Douglas
Case Management	May 1, 2011	Lookout Mtn. CSB	LaFayette	Catoosa, Chattooga, Dade, Walker
Supported Housing	May 1, 2011	Anka, Avita, Cobb/Douglas, Highland Rivers, Lookout Mountain		Region One
Supported Employment	May 1, 2011	Cobb/Douglas CSB	Smyrna	Bartow, Cherokee, Cobb, Douglas, Paulding
	April, 2012	Briggs and Associates		Cherokee, Bartow, Floyd
Addictive Disease Intensive Outpatient & Residential	July 1, 2011	Cobb/Douglas CSB	Smyrna	Cobb, Douglas
	Nov 1, 2011	Highland Rivers CSB	CedarTown	Floyd, Gordon, Polk
Peer Wellness and Recovery Center	July 19, 2011	Georgia Consumer Network	Cartersville	Bartow
Peer Wellness and Recovery Center	July 19, 2011	Georgia Consumer Network	Cleveland	White
Community Support Team (CST)	Sept. 1, 2011	Highland Rivers CSB	Fannin	Fannin, Gilmer, Pickens

**To access these or any other Behavioral Health Services in Region 1, call
GCAL 1-800-715-4225**

For Questions or Concerns call Region One office at 706-802-5272