

DBHDD Community-Based Services
Awareness Initiative

DBHDD Region Four

Adult Behavioral Health Services

As of

July 1, 2012

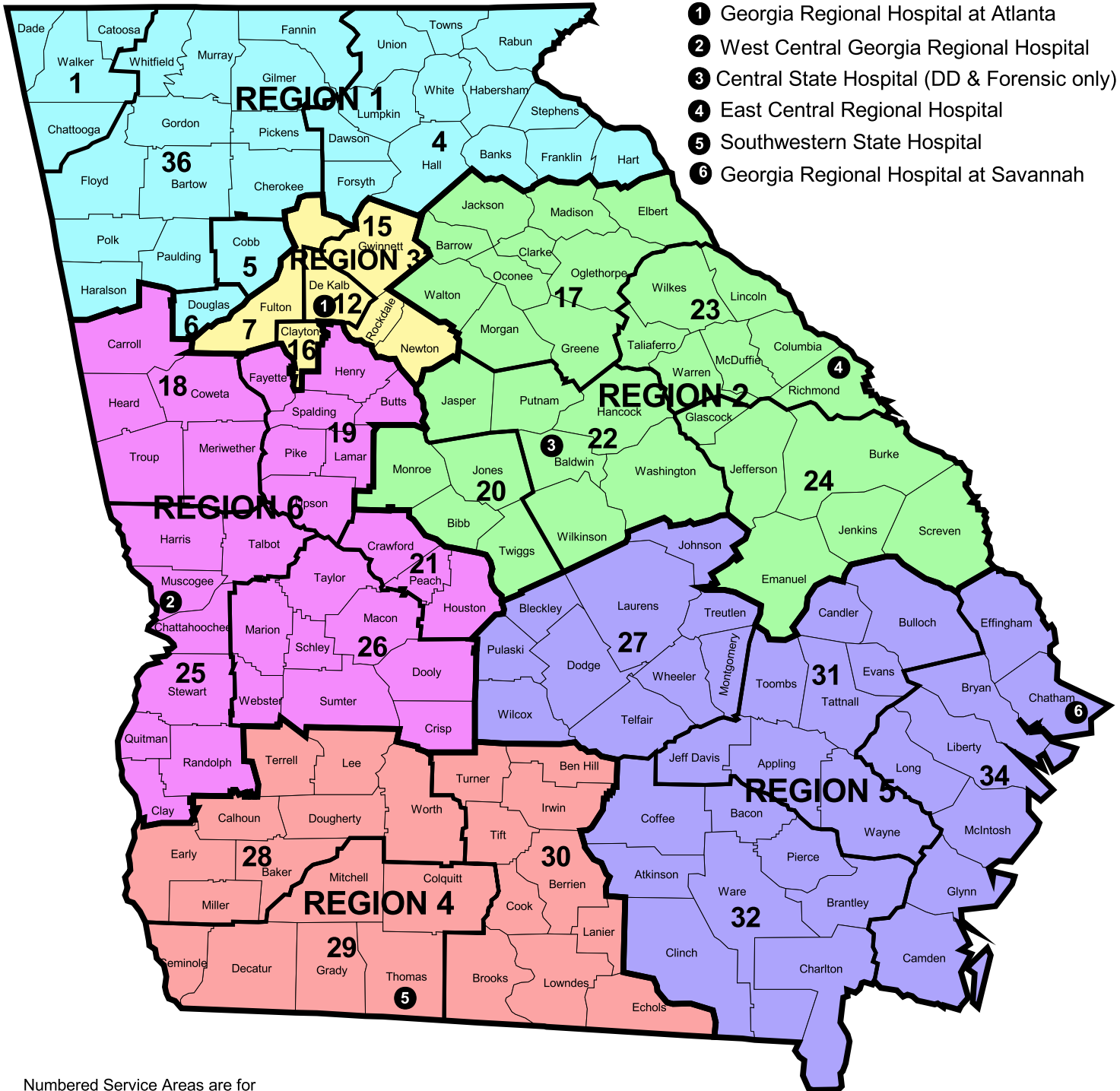
Georgia Department of Behavioral Health & Developmental Disabilities

Regional Map with Community Service Areas

Effective July 1, 2011

STATE HOSPITALS

- 1** Georgia Regional Hospital at Atlanta
- 2** West Central Georgia Regional Hospital
- 3** Central State Hospital (DD & Forensic only)
- 4** East Central Regional Hospital
- 5** Southwestern State Hospital
- 6** Georgia Regional Hospital at Savannah



Numbered Service Areas are for identification purposes only.

- | | | |
|---|--|--|
| <ul style="list-style-type: none"> 1 - Lookout Mountain Community Services 4 - Avita Community Partners 5 - Cobb Community Service Board 6 - Douglas Community Service Board 7 - Fulton County MHDDAD 12 - DeKalb Community Service Board 15 - View Point Health 16 - Clayton Community Service Board 17 - Advantage Behavioral Health Systems | <ul style="list-style-type: none"> 18 - Pathways Center for Behavioral & Developmental Growth 19 - McIntosh Trail Community Service Board 20 - River Edge Behavioral Health Center 21 - Phoenix Center Behavioral Health Services 22 - Oconee Community Service Board 23 - CSB of East Central Ga (Serenity Behavioral Health) 24 - Ogeechee Behavioral Health Services 25 - New Horizons Community Service Board 26 - Middle Flint Behavioral Healthcare | <ul style="list-style-type: none"> 27 - Community Service Board of Middle Georgia 28 - Albany Area Community Service Board 29 - Georgia Pines Community MHMRSA Services 30 - Behavioral Health Services of South Georgia 31 - Pineland Area Community Service Board 32 - Satilla Community Service Board 34 - Gateway Community Service Board 36 - Highland Rivers Community Service Board |
|---|--|--|



Georgia Department of Behavioral Health & Developmental Disabilities

Frank W. Berry, Commissioner

Region Four Office

*Post Office Box 1378 · 400 South Pinetree Boulevard · Thomasville, Georgia 31799-1378
(229) 225-5099 · Fax (229) 227-2918 · Toll Free (877) 683-8557*

Region Four DBHDD Office

The Region Four office for the Department of Behavioral Health and Developmental Disabilities (DBHDD) is one of six regional offices across the state.

The Region Four office is an administrative field office of the Department of BHDD regional system. The purpose of the Regional Office is to develop a community based system of care and to oversee contracts and monitor the performance of providers who serve people needing treatment from the public sector mental illness or addictive diseases. It is envisioned that the community based system of care will be one that can meet the needs of the eligible people without out of home placement or having to access high-end inpatient programs. In addition, the Regional Office provides planning and coordination of its provider network, provides technical assistance, and serves as the point of contact for consumers who may have questions about the service system or if they are unable to access services.

Region Four covers 24 counties in Southwest Georgia. It has a Planning Board comprised of citizens from each of the counties. The Regional Planning Board is a volunteer Board. The main role of the Planning Board is to identify community needs and gaps in the current service system and to prepare a plan annually. The Regional Planning Board serves as the formal process for identifying needs and developing recommendations to the Department of DBHDD. Their role in gathering information and informing the State officials of the critical needs of the region is very important to the system.

The Region Four office is currently located in Thomasville, Georgia.

DBHDD Region Four Office

400 South Pinetree Blvd.

Thomasville, Georgia 31757

Phone: (229) 225-5099

Fax: (229) 227-2918

Toll Free: 1-877-683-8557

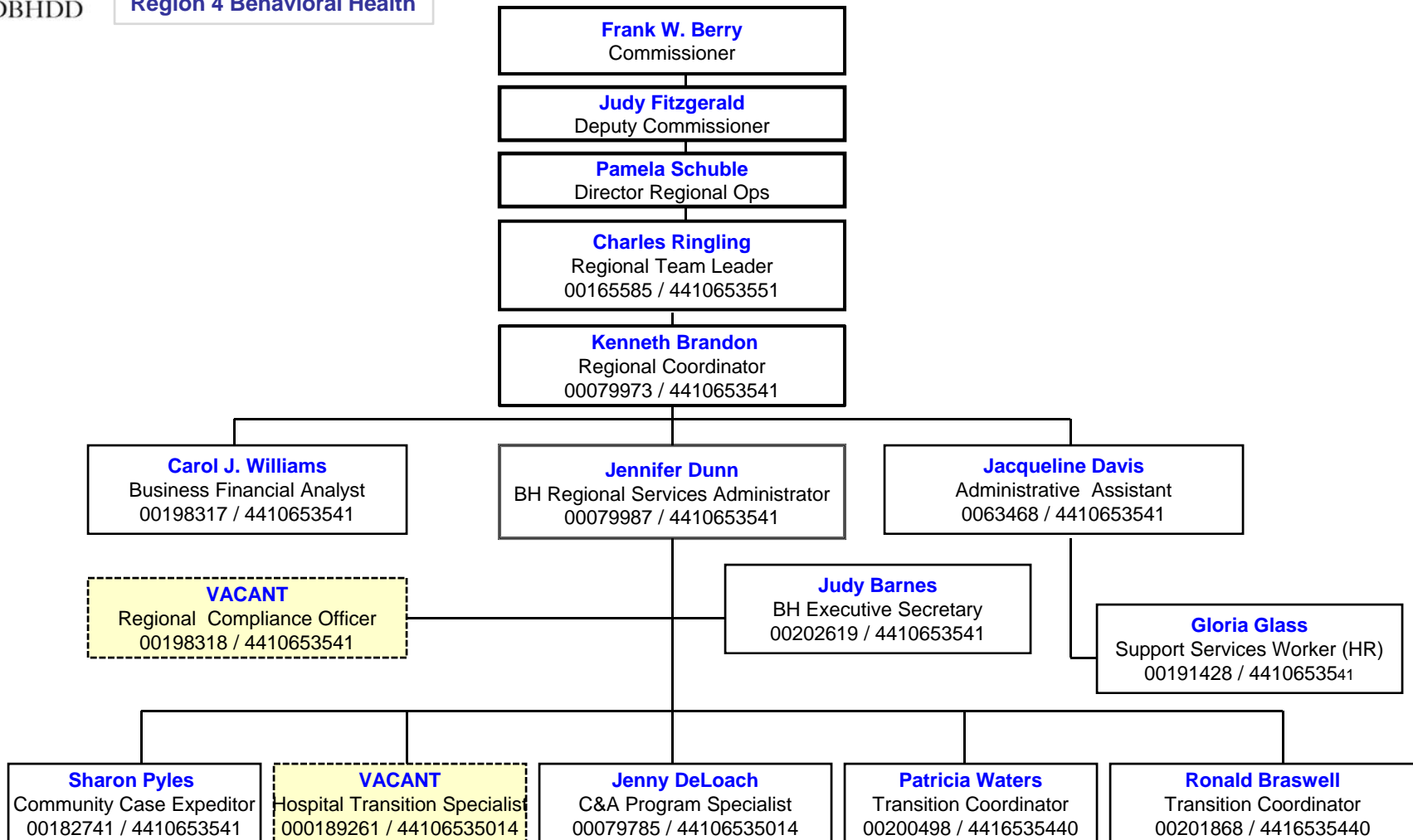


Georgia Department of Behavioral Health and Developmental Disabilities

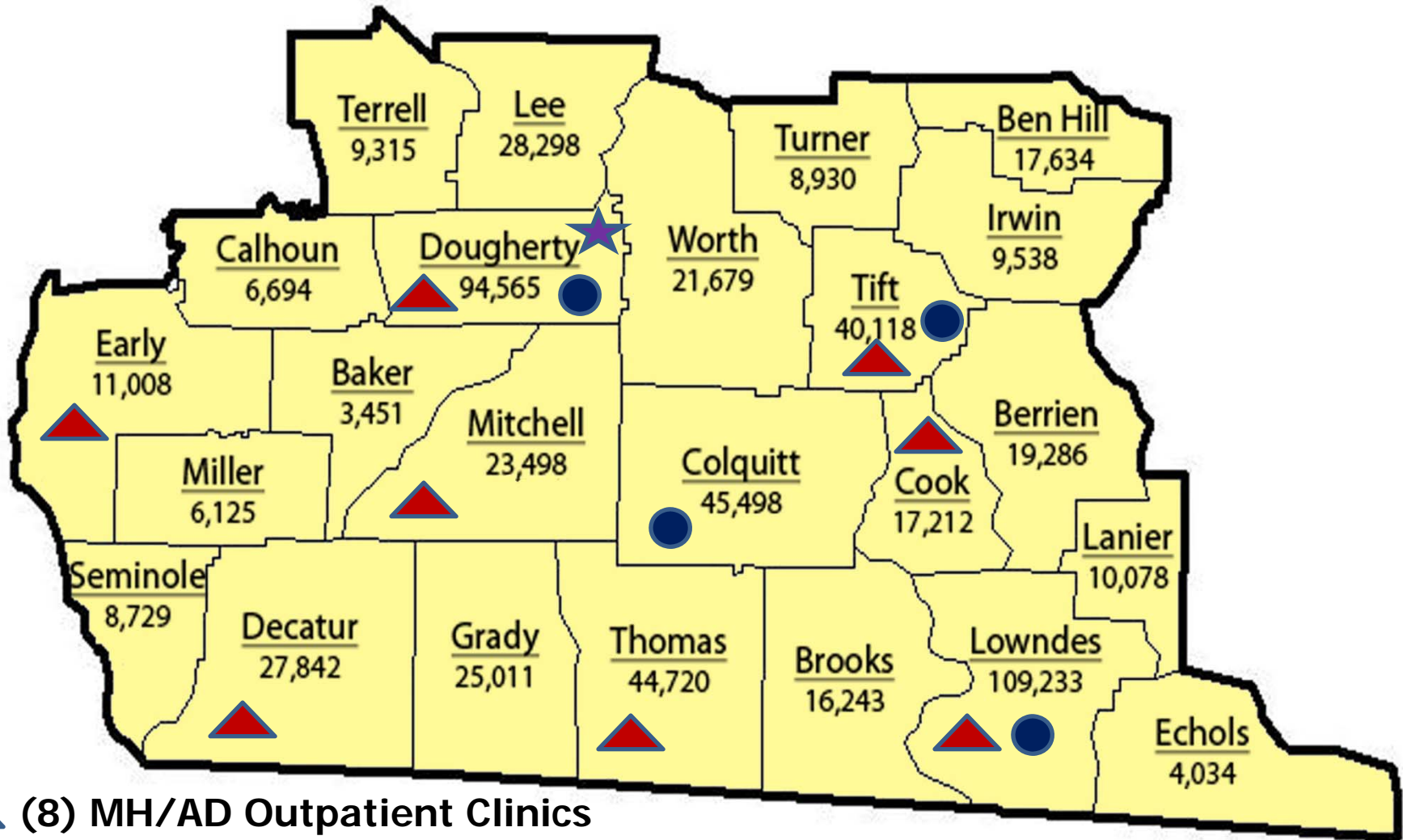
Division of Behavioral Health and Addictive Diseases

Tuesday, October 16, 2012

Region 4 Behavioral Health



Region 4 Continuum of Care and County Population*



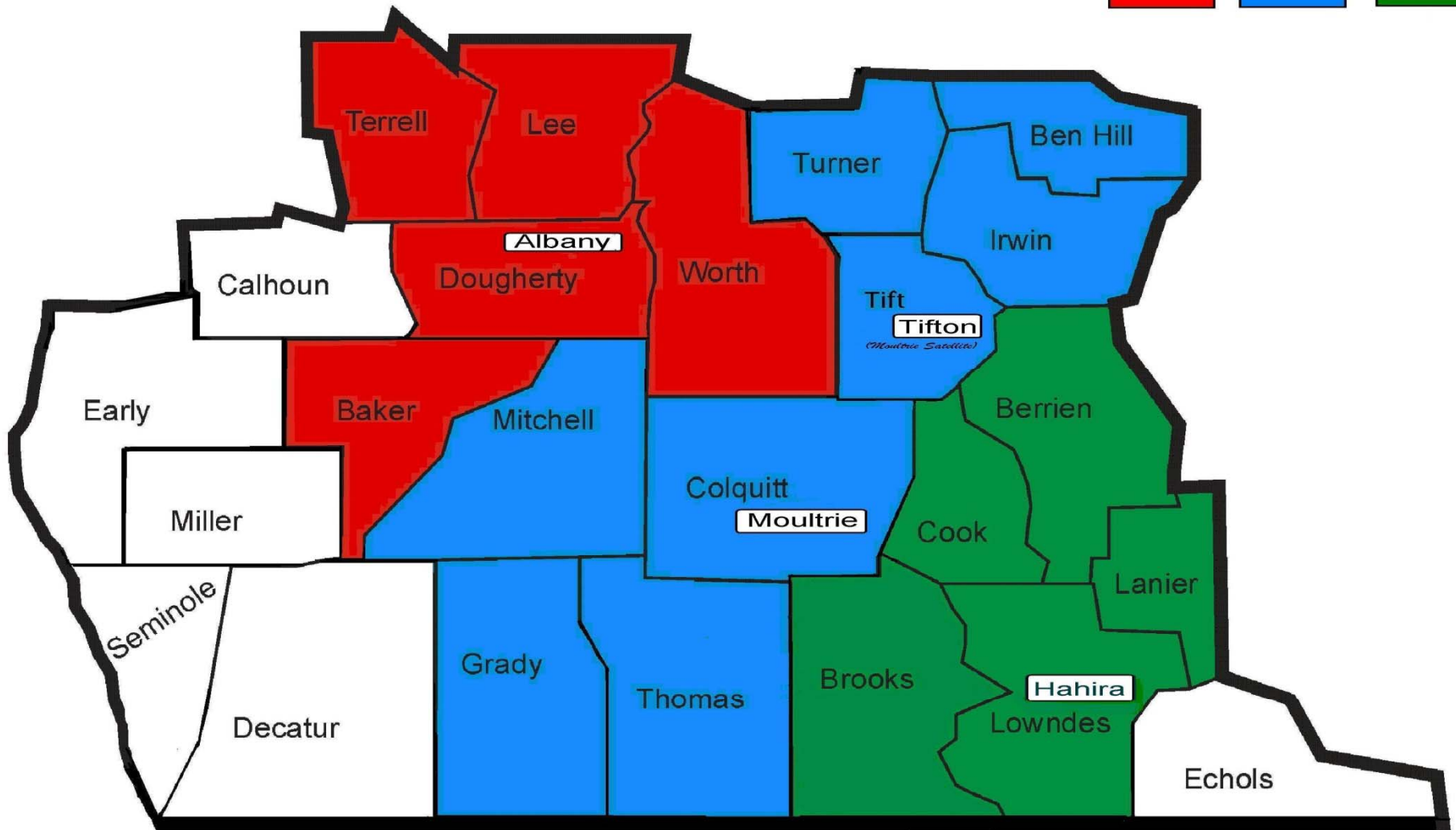
-  (8) MH/AD Outpatient Clinics
-  (4) Assertive Community Treatment
-  (1) CSU

*According to 2010 Census Data

Region 4 is projected to have Mobile Crisis, CST, and Case Management Services in FY 2013.

ACT Coverage

Albany Moultrie Hahira





DBHDD

Georgia Department of Behavioral Health & Developmental Disabilities

Frank W. Berry, Commissioner

Region Four Office

*Post Office Box 1378 · 400 South Pinetree Boulevard · Thomasville, Georgia 31799-1378
(229) 225-5099 · Fax (229) 227-2918 · Toll Free (877) 683-8557*

Region Four Service Descriptions:

Adult Core Services

The basic out-patient services for people with a serious mental illness or with an addictive disease. It consists of being evaluated by a psychiatrist and a nurse, and the development of a treatment plan. The treatment plan may include a prescription for medication, a schedule of appointments for out-patient counseling, supported employment, and home visits by a community service worker. These services are provided by 3 CSB's (Albany, Georgia Pines and South Georgia).

Adult Crisis Stabilization Services

Services provided in residential settings to rapidly stabilize the behaviors and symptoms of a person in an acute phase of mental illness, or to provide detoxification services to people high on drugs or alcohol. People are usually discharged in 5 days or less and are referred to a Core Provider for out-patient services. There is one CSP in Region 4 operated by the Albany CSB with a capacity of 25 beds. Average occupancy for the first quarter of Fiscal Year 2013 was 94%.

Adult State Hospital Services

These are services for people whose behaviors or symptoms are too acute to be effectively managed in a CSU. These services are provided in Thomasville at Southwestern State Hospital (SWSH). SWSH has 86 total adult psychiatric beds, with 67 bed being acute psychiatric and 19 being forensic. For the month of October 2012, the occupancy rate for SWSH was 75% for acute psychiatric and 87% for forensic beds. It should be noted that female forensic consumers are maintained in the acute psychiatric setting. People being discharged from these hospitals are referred to a Core Provider for out-patient care.

Adult Residential Services

Services include intensive treatment in small residential settings, supervised apartments for individuals with less intense needs, Shelter Plus (HUD funded) housing service, and independent living for individuals living on their own in the community. The Georgia Pines CSB operates four (4) 6-bed intensive treatment homes with 24 hour awake staff. The Albany CSB operates two (2) 6-bed intensive treatment homes. SWSH operates one (1) 6-bed intensive treatment home. South Georgia CSB provides supports to 30 individuals in supervised apartment settings and has a capacity to serve 92 individuals through the use of Shelter Plus vouchers. SWSH operates a 6-bed (male) and 3-bed forensic Community Integration Home (24/7 supervision). Additionally, each of the CSB's and Albany ARC serves large numbers of consumers living independently in their own homes.

Housing Voucher's

To provide Supported Housing and Bridge Funding to persons with Serious and Persistent Mental Illness in the Settlement Agreement's Target Population. The Supported Housing will assist such individuals in attaining and maintaining safe and affordable housing and support their integration into the community. The program is designed to provide housing supports for tenants who are deemed ineligible for any other benefits or for whom a HUD voucher is not available. Since the start of the program in April 2011, Region 4 has served 93



Georgia Department of Behavioral Health & Developmental Disabilities

Frank W. Berry, Commissioner

Region Four Office

*Post Office Box 1378 · 400 South Pinetree Boulevard · Thomasville, Georgia 31799-1378
(229) 225-5099 · Fax (229) 227-2918 · Toll Free (877) 683-8557*

DBHDD

individuals with housing vouchers and 95 individuals with bridge funding. 79 individuals are currently being served with vouchers.

Peer Support Services

This service provides structured activities within a peer support center that promote socialization, recovery, wellness, self-advocacy, development of natural supports, and maintenance of community living skills. Activities are provided between and among individuals, who have common issues and needs, are consumer motivated, initiated and/or managed, and assist individuals in living as independently as possible. The 3 CSB's and American Work operate Peer Support services in Region 4.

Supported Employment

In line with current best practice, this service emphasizes that a rapid job search and placement approach be prioritized above traditional prevocational training or traditional vocational rehabilitation. Job development, placement and training are for people who, due to the severity of their disabilities, need support to locate, choose, obtain, learn and maintain a job. Services include supports to choose and obtain paid employment in competitive wage, individual-based community jobs, as well as brief training support to learn the specific job skills/tasks necessary to perform and retain a particular job. American Work, LARC, and G&B Works provide Supported Employment services in Region 4.

Assertive Community Treatment (ACT)

ACT has all of the service types of a Core Provider except the building, and it has smaller case loads in order to provide more intense services in the person's community. Region 4 has 3 ACT Teams operated by the 3 CSB's. The teams are based in Albany, Moultrie and Thomasville and operate in a 30 mile radius of each town. Each team can have a caseload of 100 people consisting of people with a serious mental illness and who are most at risk of re-hospitalization, or of being homeless or jailed are eligible for this service.

Case Management(CM) and Community Service Teams(CST) are other forms of community based care that goes to the person in their home or other places in the community to support their efforts to recovery. Caseloads are usually no more than 30 people per staff member. These services are an adjunct to the Core Services the person is receiving and are designed to help the person be successful in their community. The Albany CSB and South Georgia CSB's are funded to provide Case Management services, and the Albany CSB provides CST services.

Treatment Court Services serve to pair traditional outpatient behavioral health services with court systems for individuals with severe and persistent mental illness and/or chronic substance abuse issues and chronic histories of legal involvement. Functionally, traditional behavioral health service providers work with Superior or State Courts to craft treatment plans for which the court holds the consumer accountable in lieu of incarceration. In Region 4, the Dougherty County Superior Court partners with the Albany CSB and Albany ARC to operate a treatment court serving individuals who have committed non-violent felony or misdemeanor crimes. In conjunction with the Georgia Pines CSB, the State Court Judge in Mitchell County operates a drug court.

**Emergency Receiving Facilities
DBHDD Region 4
November 2012**

for entrance into any of these facilities contact BHL 1 (800) 715-4225

Community Service Board	Crisis Stabilization Unit (CSU) Name and Address	CSU Director, Medical Director and Contact Number
Albany Area Community Service Board PO Box 1988 Albany, GA 31701	Albany Area Crisis Stabilization Program 903 W 11th Ave Albany, GA 31701	Director: Kay Brooks (Minnie Johnson Manager) Email: kbrooks@albanycsb.org, mjohnson@albanycsb.org Phone: (229) 430-6006 Medical Director: Dr. Jaymal Patel, 229-430-4005
Emergency Receiving Facilities	Emergency Room Contact Information	Clinical Contact Information
Phoebe Putney Memorial Hospital 417 3rd Avenue West Albany, GA 31701	Emergency Room Contact 229-312-1000	President/CEO: Joel Wernick Phone: (229) 312-1321 VP of Clinical Services: Richard Bowe, MD
John D. Archbold Memorial Hospital 915 Gordon Ave Thomasville, Georgia 31792	Emergency Room Contact 229-228-2000	President/CEO: Perry Mustian Phone: 229-228-2935 VP of Clinical Services: Ken Brooker
Turning Point 3015 Veterans Parkway S Moultrie, Ga 31788-6705	Intake and Admissions: 229-985-4815	President/CEO: Ben Marion Phone: 229-985-4815 Medical Director: Peggy Yates
State Hospital	Admissions Contact Information	Clinical Contact Information
Southwestern State Hospital 400 South Pintree Blvd. Thomasville, GA 31792 Phone (229) Fax (229)	Phone (229) 227-3010 Fax (229) 227-2964	Regional Hospital Administrator: Eric Carpenter Clinical Director: Joseph LeRoy, MD Social Services Chief: Lisha Jones, LCSW

DBHDD Region 4
New Community Based Services

Adult Mental Health & Addictive Disease				
Service	Start Date	Provider	Location	Area Covered
Assertive Community Treatment (ACT)	10/01/12	Georgia Pines	Moultrie	Ben Hill, Colquitt, Grady, Irwin, Mitchell, Thomas, Tift, and Turner
Assertive Community Treatment (ACT)	10/16/12	Albany Area CSB	Albany	Baker, Dougherty, Lee, Terrell, and Worth
Assertive Community Treatment (ACT)	10/16/12	Behavioral Health Services of South Georgia	Valdosta	Berrien, Brooks, Cook, Lanier, and Lowndes
Community Support Team (CST)	07/01/12	Albany Area CSB	Albany	Decatur, Early, Miller, and Seminole
Case Management (CM)	07/01/12	Albany Area CSB	Albany	Baker, Calhoun, Early, Dougherty, Miller, Lee, Terrell, and Worth
Case Management (CM)	07/01/12	Behavioral Health Services of South Georgia	Valdosta	Ben Hill, Berrien, Brooks, Cook, Echols, Irwin, Lanier, Lowndes, Tift, and Turner
Supported Employment (SE)	07/01/11	LARC	Valdosta	Lowndes
Supported Employment (SE)	07/01/11	G&B Works	Valdosta	Lowndes