

DBHDD Community-Based Services
Awareness Initiative

DBHDD Region Five

Adult Behavioral Health Services

As of

July 1, 2012

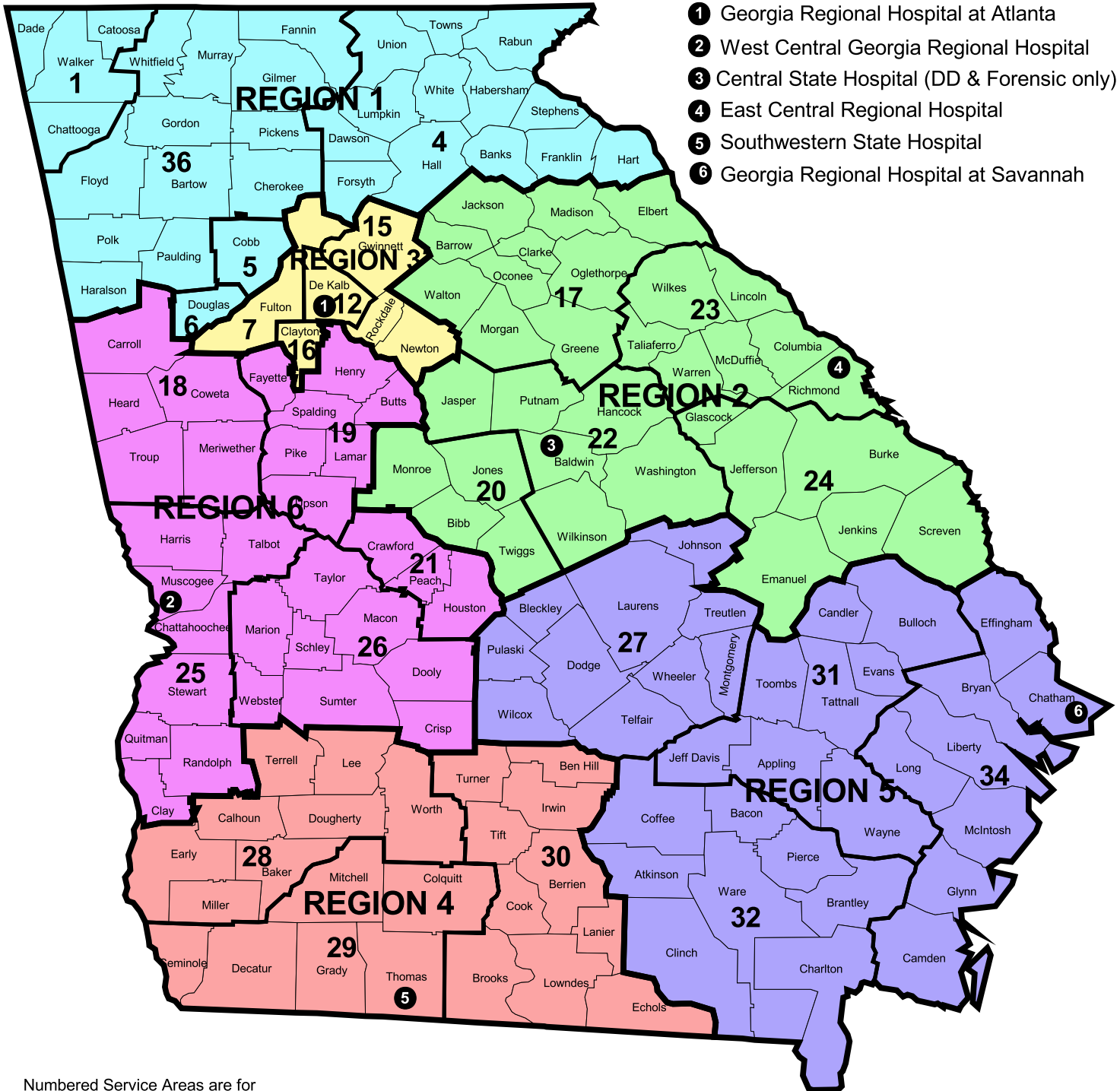
Georgia Department of Behavioral Health & Developmental Disabilities

Regional Map with Community Service Areas

Effective July 1, 2011

STATE HOSPITALS

- 1** Georgia Regional Hospital at Atlanta
- 2** West Central Georgia Regional Hospital
- 3** Central State Hospital (DD & Forensic only)
- 4** East Central Regional Hospital
- 5** Southwestern State Hospital
- 6** Georgia Regional Hospital at Savannah



Numbered Service Areas are for identification purposes only.

- | | | |
|---|--|--|
| <ul style="list-style-type: none"> 1 - Lookout Mountain Community Services 4 - Avita Community Partners 5 - Cobb Community Service Board 6 - Douglas Community Service Board 7 - Fulton County MHDDAD 12 - DeKalb Community Service Board 15 - View Point Health 16 - Clayton Community Service Board 17 - Advantage Behavioral Health Systems | <ul style="list-style-type: none"> 18 - Pathways Center for Behavioral & Developmental Growth 19 - McIntosh Trail Community Service Board 20 - River Edge Behavioral Health Center 21 - Phoenix Center Behavioral Health Services 22 - Oconee Community Service Board 23 - CSB of East Central Ga (Serenity Behavioral Health) 24 - Ogeechee Behavioral Health Services 25 - New Horizons Community Service Board 26 - Middle Flint Behavioral Healthcare | <ul style="list-style-type: none"> 27 - Community Service Board of Middle Georgia 28 - Albany Area Community Service Board 29 - Georgia Pines Community MHMRSA Services 30 - Behavioral Health Services of South Georgia 31 - Pineland Area Community Service Board 32 - Satilla Community Service Board 34 - Gateway Community Service Board 36 - Highland Rivers Community Service Board |
|---|--|--|

Region Five DBHDD Office

The Region Five office for the Department of Behavioral Health and Developmental Disabilities (DBHDD) is one of six regional offices across the state.

The Region Five office is an administrative field office of the Department of BHDD regional system. The purpose of the Regional Office is to develop a community based system of care and to oversee contracts and monitor the performance of providers who serve people needing treatment from the public sector mental illness or addictive diseases. It is envisioned that the community based system of care will be one that can meet the needs of the eligible people without out of home placement or having to access high-end inpatient programs. In addition, the Regional Office provides planning and coordination of its provider network, provides technical assistance, and serves as the point of contact for consumers who may have questions about the service system or if they are unable to access services.

Region Five covers 34 counties in Southeast Georgia. It has a Planning Board comprised of citizens from each of the counties. The Regional Planning Board is a volunteer Board. The main role of the Planning Board is to identify community needs and gaps in the current service system and to prepare a plan annually. The Regional Planning Board serves as the formal process for identifying needs and developing recommendations to the Department of DBHDD. Their role in gathering information and informing the State officials of the critical needs of the region is very important to the system.

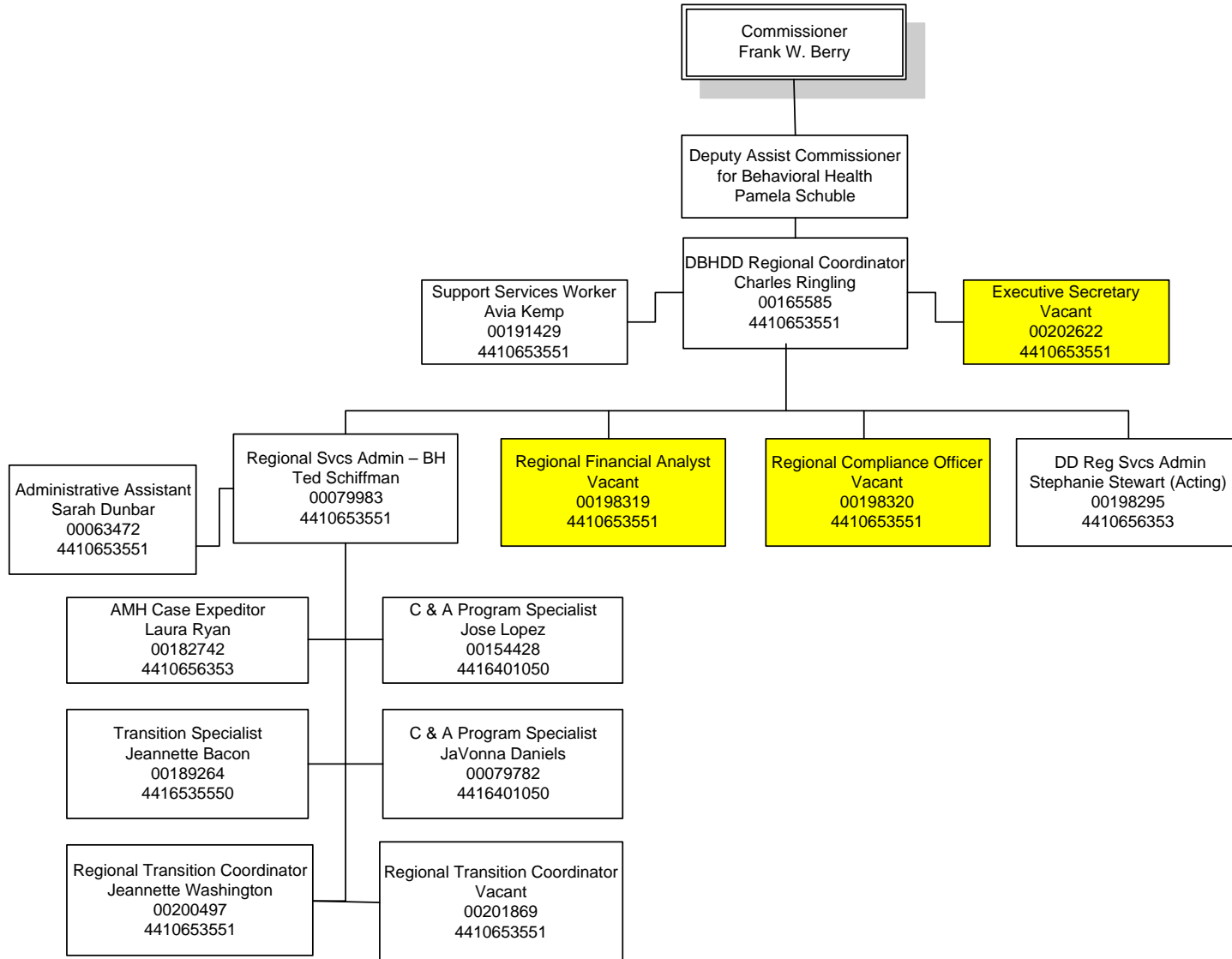
The Region Five office is currently located in Savannah, Georgia.

DBHDD Region Five Office
1915 Eisenhower Drive, Building 7
Savannah, GA 31406
Phone: (912) 303-1670
Fax: (912) 303-1681
Toll Free: 1-800 348-3503

Department of Behavioral Health & Developmental Disabilities

Regional Operations/DBHDD Region 5 Administration

8/13/2012



Full Array of Behavioral Health Services

CORE Behavioral Health:

- Beh Health Assmt & Serv Plan Development
- Psychological Testing
- Diagnostic Assessment
- Crisis Intervention
- Psychiatric Treatment
- Nursing Assessment & Care
- Medication Administration
- Community Support
- Individual Outpatient Services
- Group Outpatient Services
- Family Outpatient Services
- Pharmacy

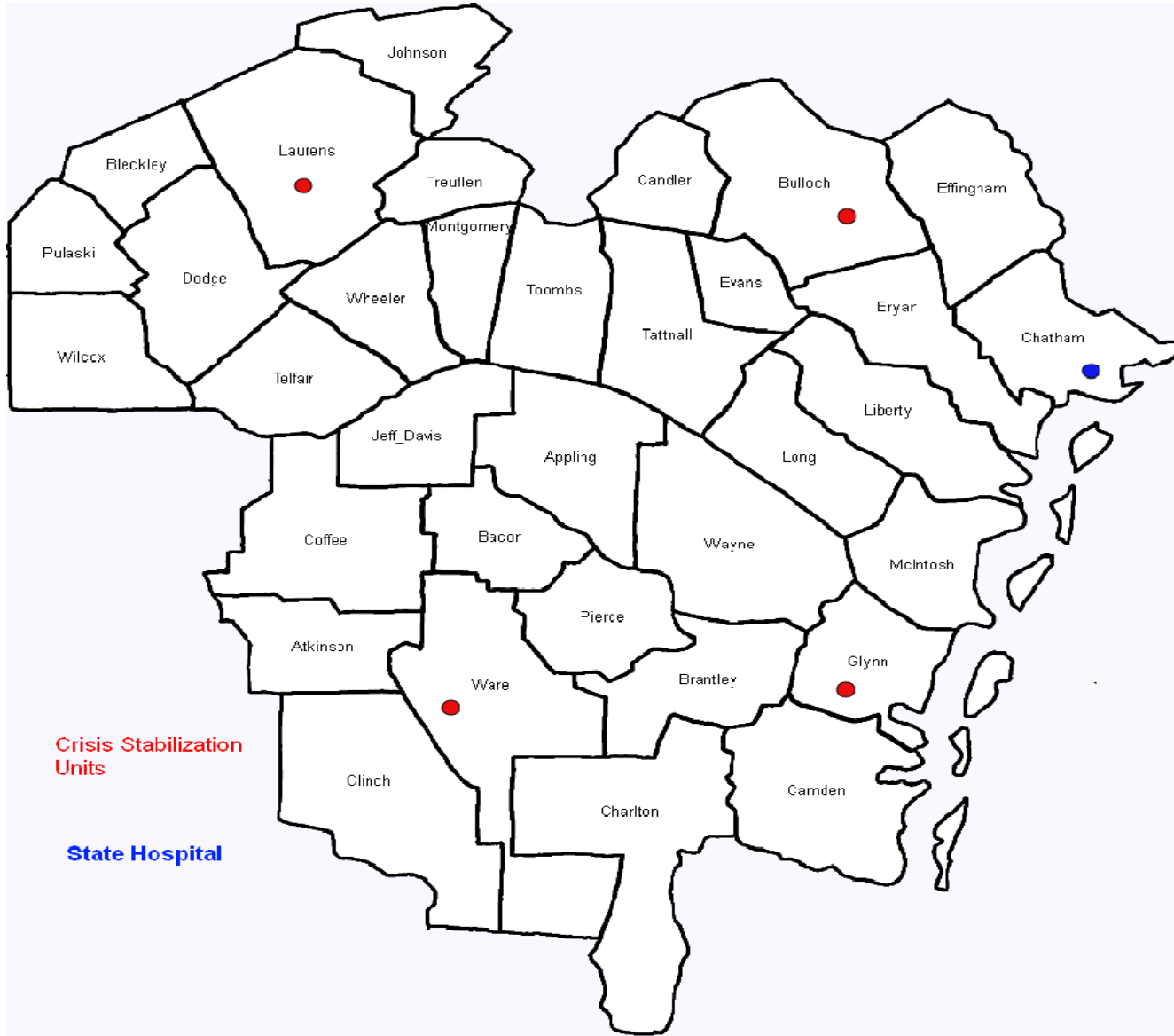
SPECIALTY Behavioral Health:

- Crisis Stabilization Program
- ACT
- Peer
- CST
- PSR
- CM
- ICM
- Supportive Employment
- Housing Vouchers
- Residential
- HIV
- MCT

SPECIALTY Addictive Diseases:

- Social Detox
- Residential
- Intensive Outpatient
- Treatment Court (6)
- Group
- SA Prevention

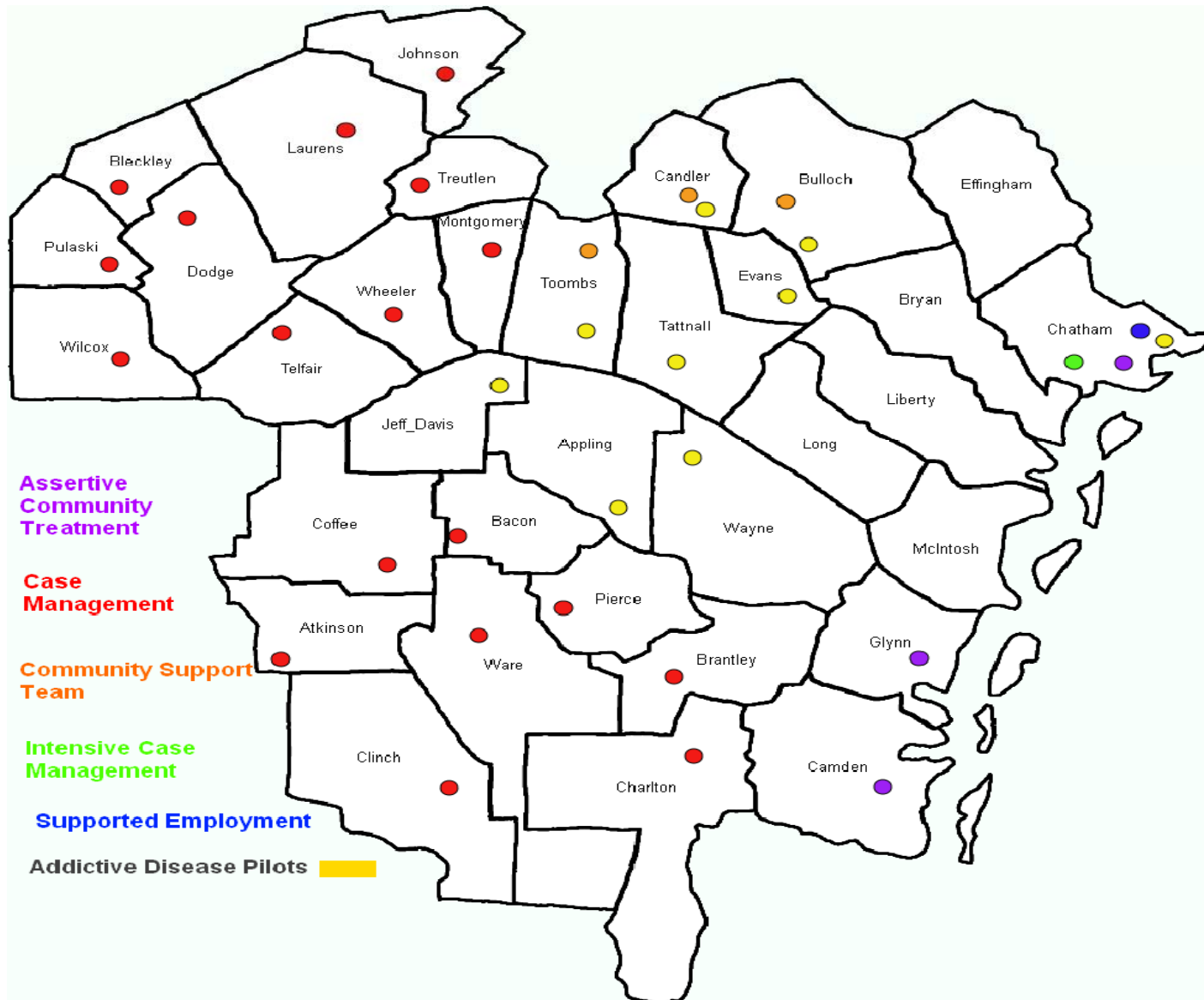
Region Five DBHDD Emergency Receiving Facilities



Crisis Stabilization
Units

State Hospital

Region 5 Adult Behavioral Health Intensive Community Services July 1, 2012



Service Descriptions:

Adult Core Services

The basic out-patient services for people with a serious mental illness or with an addictive disease. It consists of being evaluated by a psychiatrist and a nurse, and the development of a treatment plan. The treatment plan may include a prescription for medication, a schedule of appointments for out-patient counseling, supported employment, and home visits by a community service worker. These services are provided by 4 CSB's, and 2 private providers.

Adult Crisis Stabilization Services

Services provided in residential settings to rapidly stabilize the behaviors and symptoms of a person in an acute phase of mental illness, or to provide detoxification services to people high on drugs or alcohol. People are usually discharged in 5 days or less and are referred to a Core Provider for out-patient services. There are 4 CSU's in Region Five and they are operated by 4 CSB's. They have a combined capacity of 60 beds and admit an average of 320 people per month.

Adult In-patient Hospitalization Services

These are services for people whose behaviors or symptoms are too acute to be effectively managed in a CSU. These services are provided through a state hospital in Savannah, GA: Georgia Regional Savannah (GRHS) which have 78 beds. During the first quarter of this fiscal year, there has been an average of 108 admissions per month with an average daily census of 42 people. People being discharged from GRHS are referred to a Core Provider for out-patient care.

Adult Residential Services

Services range from intensive treatment in a small residential setting with the goal of the person recovering to the point of moving to independent living; to providing rent supplements to help a person in recovery live as independently as possible. There are 274 slots available that serve an estimated 390 people per year. These residential services are provided by 2 CSB's and 2 private providers.

Housing Voucher's

To provide Supported Housing and Bridge Funding to persons with Serious and Persistent Mental Illness in the Settlement Agreement's Target Population. The Supported Housing will assist such individuals in attaining and maintaining safe and affordable housing and support their integration into the community. The program is designed to provide housing supports for approximately 2,000 tenants statewide that are deemed ineligible for any other benefits.

Peer Support Services

This service provides structured activities within a peer support center that promote socialization, recovery, wellness, self-advocacy, development of natural supports, and maintenance of community living skills. Activities are provided between and among individuals, who have common issues and needs, are consumer motivated, initiated and/or managed, and assist individuals in living as independently as possible.

Supported Employment

In line with current best practice, this service emphasizes that a rapid job search and placement approach be prioritized above traditional prevocational training or traditional vocational rehabilitation. Job development, placement and training are for people who, due to the severity of their disabilities, need support to locate, choose, obtain, learn and maintain a job. Services include supports to choose and obtain paid employment in competitive wage, individual-based community jobs, as well as brief training support to learn the specific job skills/tasks necessary to perform and retain a particular job.

Assertive Community Treatment (ACT)

Has all of the service types of a Core Provider except the building, and it has smaller case loads in order to provide more intense services in the person's community, including 24/7 support. Region Five has two teams provided by 1 CSB and 1 Private provider. One team covers Chatham County while the other covers Glynn and Camden Counties. In a year each team can serve up to 100 people consisting of people with a serious mental illness and who are most at risk of re-hospitalization, or of being homeless or jailed are eligible for this service.

Intensive Case Management(ICM), Case Management(CM), and Community Service

Teams(CST) are other forms of community based care that goes to the person in their home or other places in the community to support their efforts to recovery. Caseloads are usually no more than 30 people per staff member. These services are an adjunct to the Core Services the person is receiving and are designed to help the person be successful in their community. ICM is provided by 1 CSB, CM is provided by two different CSBs, and CST is provided by a fourth CSB.

Mobile Crisis Team (MCT)

A service that has staff on call 24/7 to respond to any crisis call that may be related to a mental illness or substance abuse issue. They conduct a face to face evaluation where ever the person is located and will make recommendations for further treatment if indicated. This service is available in 4 of the 34 counties of region five, and offered by 2 CSBs and GRHS. These teams conduct an average of 130 evaluations per month.

**Emergency Receiving Facilities
DBHDD Region 5
September 2012**

for entrance into any of these facilities contact BHL 1 (800) 715-4225

Community Service Board	Crisis Stabilization Unit (CSU) Name and Address	CSU Director, Medical Director and Contact Number
Community Service Board of Middle Georgia 2121A Bellevue Road Dublin, GA 31021	Quentin Price, MD Crisis Stabilization Program 118 Thomas Lane Dublin, GA	Director: Jenny Yancey Email: jyancey@csbmg.com Phone: (478) 275-6811 x1175 Medical Director: Dr. Thomas Rumble
Gateway Behavioral Health Services 700 Coastal Village Drive Brunswick, GA 31520	Gateway Crisis Stabilization Unit 121 Burgess Road Brunswick, GA 31523	Director: Cathy Thompson Email: cthompson@gatewaybhs.org Phone: (912) 554-8455 Medical Director: Dr. Faulk
Pineland MH/DD/AD 5 West Altman Street Statesboro, GA 30458	John's Place Crisis Stabilization Unit 4 West Altman Street Statesboro, GA 30458	Director: Tami Russo Email: trusso@pinelandcsb.org Phone: (912) 764-6127 Medical Director: Dr. Joel Bray
Satilla Community Services 1007 Mary Street Waycross, GA 31503	St. Illa Crisis Stabilization Program 3455 Harris Road Waycross, GA 31503	Director: Eva Fedd Email: efedd@satillacsb.org Phone: (912) 449-7203 Medical Director: Dr. Lionel Bryan
State Hospital	Admissions Contact Information	Clinical Contact Information
Georgia Regional Hospital at Savannah 1915 Eisenhower Drive Savannah, GA 31406 Phone: (912) 356-2011 Fax: (912) 356-2691	Phone: (912) 356-2030 Fax: (912) 356-2573	Acting Regional Hospital Administrator: Reemon Bishara, M.D. Nurse Executive: Cynthia Jackson, RN, MSN Social Services Chief: Stephanie Hines Warren, LCSW

DBHDD Region 5
New Community Based Services

Adult Mental Health & Addictive Disease				
Service	Start Date	Provider	Location	Area Covered
Assertive Community Treatment (ACT)	04/01/11	AmericanWork	Savannah	Chatham
Assertive Community Treatment (ACT)	07/01/11	Gateway Behavioral Health Services	Brunswick	Glynn, Camden
Community Support Team (CST)	07/01/12	Pineland MH/DD/AD	Statesboro	Bulloch, Candler, Toombs
Intensive Case Management (ICM)	07/01/12	Savannah Counseling Services	Savannah	Chatham
Case Management (CM)	07/01/12	Community Service Board of Middle GA	Dublin	Bleckley, Dodge, Johnson, Laurens, Montgomery, Pulaski, Telfair, Treutlen, Wheeler, Wilcox
Case Management (CM)	07/01/12	Satilla Community Services	Waycross	Atkinson, Bacon, Brantley, Charlton, Clinch, Coffee, Pierce, Ware
Supported Employment (SE)	07/01/11	AmericanWork	Savannah	Chatham
Social Detox	07/01/09	Recovery Place	Savannah	Chatham
Addictive Disease Pilot Programs: Intensive Outpatient and Transitional Housing	07/01/11	Pineland MH/DD/AD	Statesboro	Appling, Bulloch, Candler, Evans, Jeff Davis, Tattnall, Toombs, Wayne