

Board Meeting

BE D·B·H·D·D

Georgia Department of Behavioral Health & Developmental
Disabilities

February 27, 2025



Agenda

Roll Call

Call to Order

Action Items

- Board Meeting Minutes – December 12, 2024
-

Commissioner's Report

- IDD – Living and Working in Georgia
 - Budget Update
 - Board Member Engagement
-

Chair's Report

Public Comment

Roll Call

Chelsea Nabritt

Board and Special Project Manager

Call to Order

Lasa Joiner

Chair

Action Item

- Board Meeting Minutes – December 12, 2024

Commissioner's Report

Kevin Tanner
Commissioner

BE D·B·H·D·D

Georgia Department of Behavioral Health & Developmental Disabilities

Ronald Wakefield

Executive Director of Intellectual and Developmental Disabilities

February 27, 2025



D·B·H·D·D

DBHDD Initiatives and Support for Inclusive Community Services

There are several initiatives DBHDD has been supporting over the past many years to support service providers in better understanding the expectations of the HCBS Settings Rule.



Sangha Unity Network, Inc.

Sangha Unity Network, Inc. has been engaging providers in participating in the learning journey for the past 3 years, as well as providing on going workshops on transformational change to all service providers, Intensive/Support Coordinators, Behavior Support Specialists, Nurses and Field Office staff.



Diversified Enterprises

Diversified Enterprises (DE) has delivered community-based services for nearly 40 years. The model is sustainable and provides people with opportunities to live the life they love. DBHDD continues to collaborate with Diversified Enterprises (DE) to improve community partnerships through collaborative meetings and shared values.



Orange Grove seeks to be a movement, not a place; seeks to be a community, not a setting; and seeks to be a practice not a promise. With the support of DBHDD initiatives, we are better able to support people with an inclusive daily experience of their choice by having partners and a purpose in the larger community.



**Diversified
Enterprises**

**True
Community
Life**



**Chris Franks
Karen Franks**



Seth Morgan and Amy Morgan



Everyone deserves the freedom to choose their own pathways and the opportunity to live a life filled with value and purpose.



Sangha Unity Network, Inc



EXCEPTIONAL
COMMUNITY SERVICES
HOPE LOVE DIGNITY AND RESPECT



The Jessamine Place



Sangha Unity Network, Inc.



D-B-H-D-D

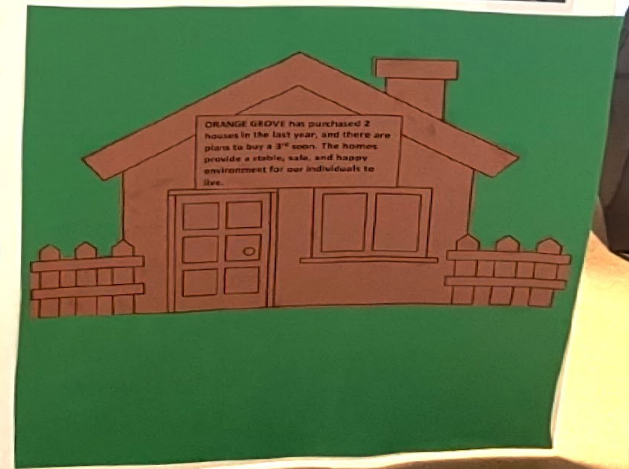
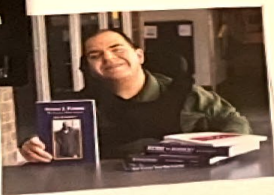
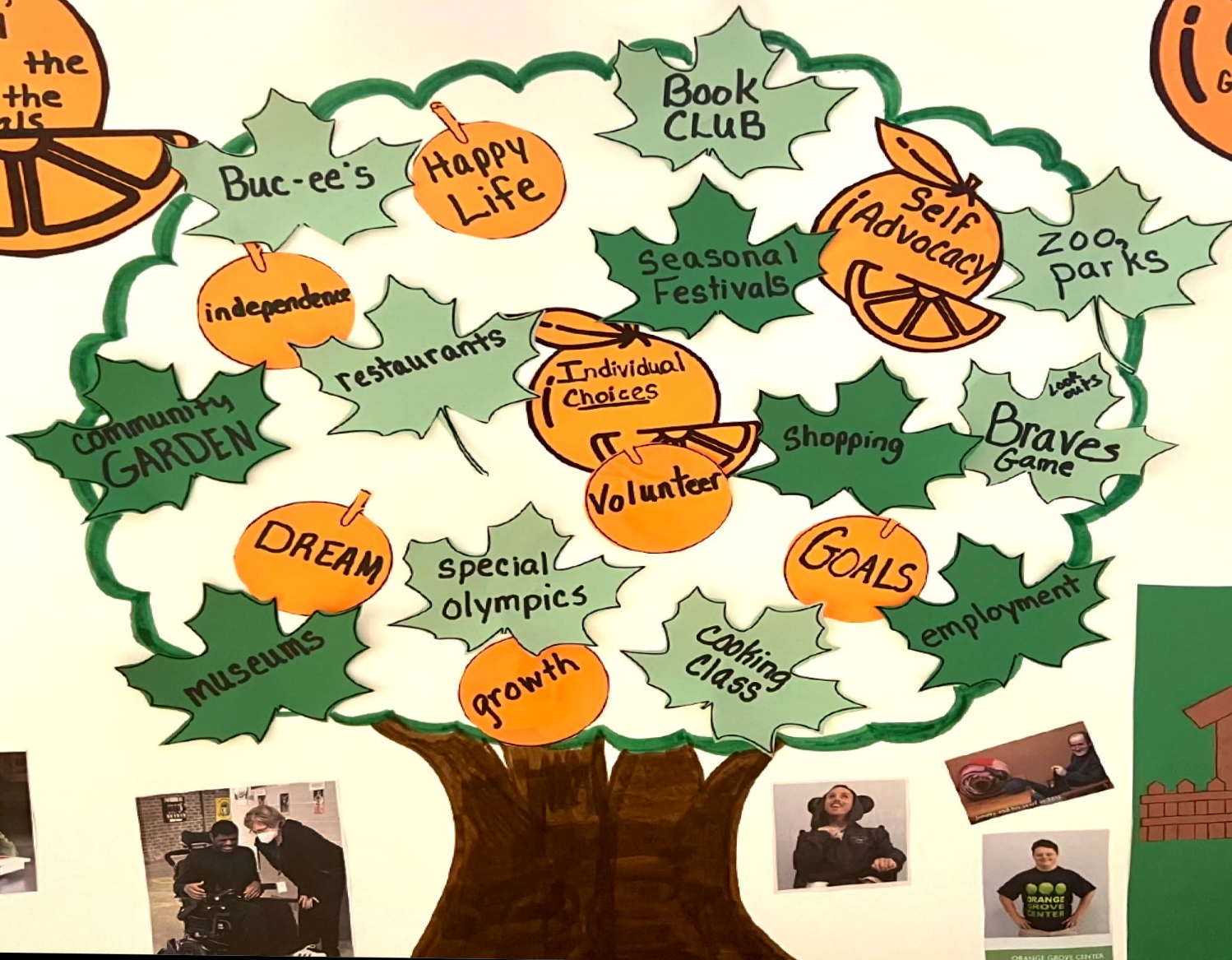
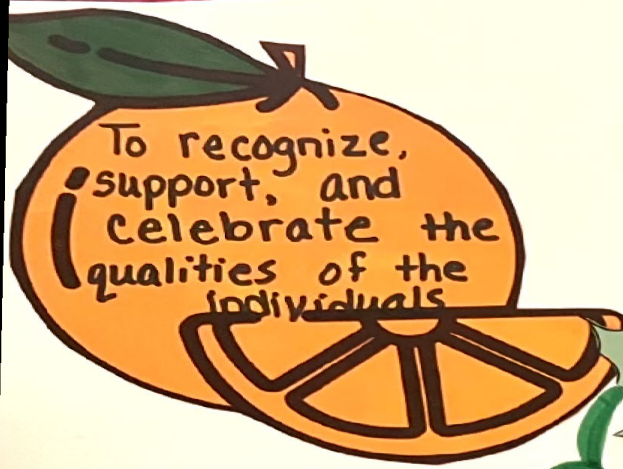
Georgia Department of
Behavioral Health and
Developmental Disabilities

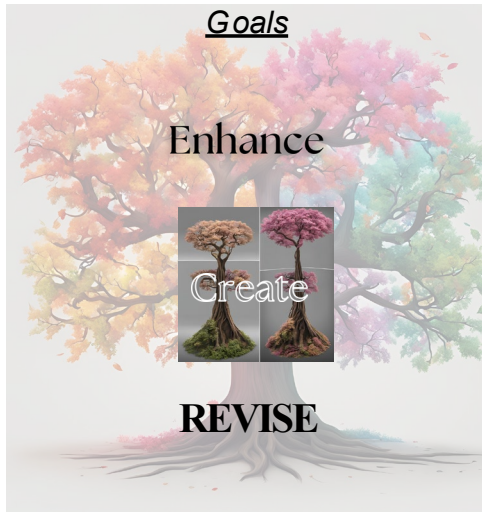
The Learning Journey has been designed for 6 provider agencies who seek to further commit to a foundation of supporting self-advocates and person-centered practices. It is an **8-month commitment** that offers an opportunity for personal growth for each individual participant *and* collective discovery for provider organizations.

The Learning Journey provides an opportunity for committed providers to make a SHIFT from a service/system centered model of service provision to a person-centered model as required within the CMS Home and Community Based Settings Rule.

This journey supports long term individual and organizational change focusing on creating supports that are based on what the people we work for want to learn and how they want to contribute to their community and their life of meaning.







Transformational Change



Using Person-Centered Practices in Meeting the HCBS Settings Rule

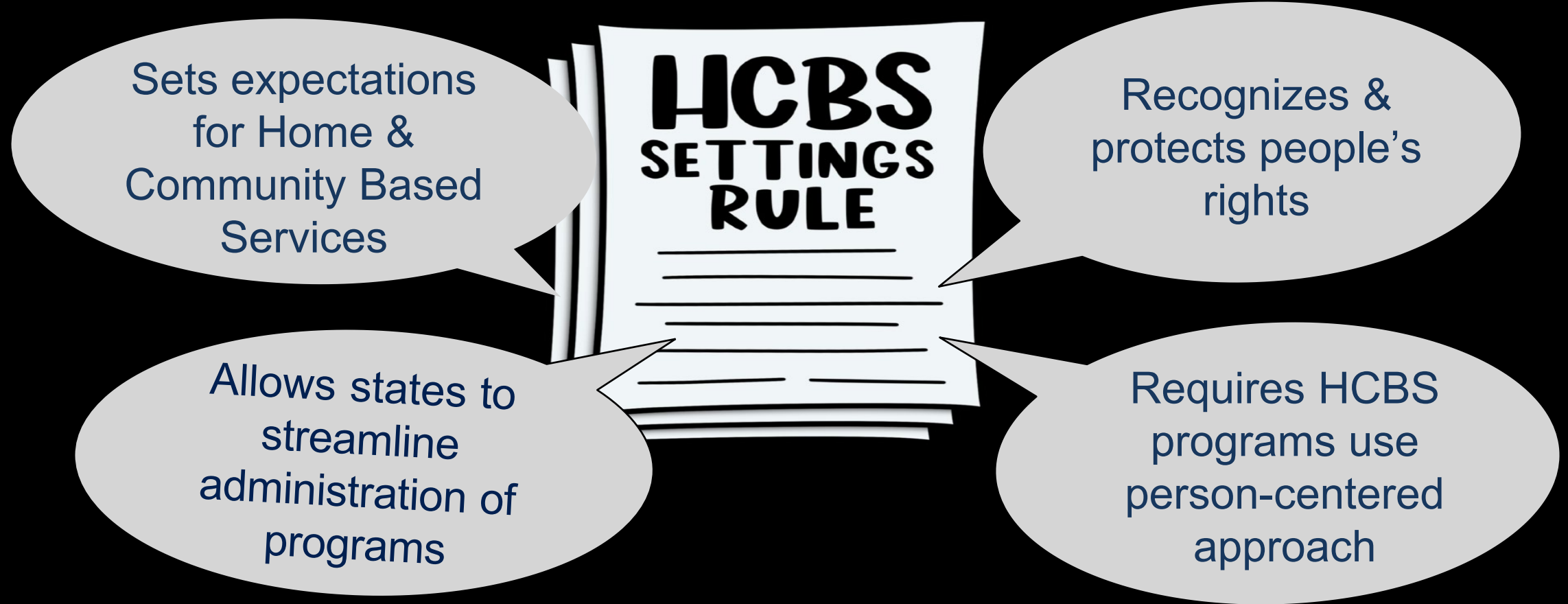
The Home and Community Base (HCBS) Settings Rule is now in the full implementation stage in every state.

The heart/root of the Settings Rule is the understanding of people as people; where agencies function from a person-centered framework including, and not limited to person-thinking, centered thinking, planning, and service delivery.

“The Rule creates a framework that will result in a shared understanding of quality community living. It will take attention, advocacy, and action by stakeholders to make the promise of the Rule a reality for all people receiving HCBS.”

Alison Barkoff





- Complete remediation and validation activities to address access to broader community and options for roommate and choice of non- disability specific setting with notices being sent to dis-enroll noncompliant settings and provide notice to participants.
- Address findings related to the CMS on-site visit including processes for the development and ongoing monitoring of person-centered service plans across all waivers.

To Be Part of Our Community



Gary Simmons

- Past work in an enclave
- 18 years with First Products
- True connections with people at work, church, and community
- None of this would have been possible in a day center

BE D·B·H·D·D

Georgia Department of Behavioral Health & Developmental Disabilities

Kevin Tanner
Commissioner

February 27, 2025



Amended FY 2025 Budget Adjustments



D·B·H·D·D

Amended FY 2025 Budget Adjustments

| Adult Addictive Diseases Services | Line # | Governor's Rec | House Changes | Senate Changes |
|---|---------------|-----------------------|----------------------|-----------------------|
| Replace state general funds with other funds for the expansion of Hepatitis C screening services at core behavioral health provider sites | 59.1 | (\$375,000) | 0 | (\$375,000) |
| Adult Developmental Disabilities Services | Line # | Amount | | |
| Reduce funds to reflect the delayed start date of the Macon Crisis Stabilization and Diagnostic Center (CSDC) for individuals with intellectual and developmental disabilities | 61.1 | (\$1,597,362) | No Change | (\$3,597,362) |
| Adult Forensic Services | Line # | Amount | | |
| Reduce funds to reflect the delayed start date of a 30-bed jail-based competency restoration program pilot in Dodge County | 62.1 | (\$436,920) | No Change | No Change |
| Adult Mental Health Services | Line # | Amount | | |
| Transfer funds from the Georgia State Investment and Financing Commission to the Department of Behavioral Health and Developmental Disabilities for the planning, design, and land acquisition of a new behavioral health crisis center in North Metropolitan Atlanta | 63.1 | \$500,000 | No Change | No Change |
| Child & Adolescent Developmental Disabilities | Line # | Amount | | |
| Increase funds to assist families in connection and engagement with children with disabilities | 65.1 | 0 | 0 | \$60,000 |

Amended FY 2025 Budget Adjustments

| Georgia State Financing and Investment Commission (GSFIC) | Line # | Governor's Rec | House Changes | Senate Changes |
|--|---------|----------------|------------------|------------------|
| Utilize \$1,250,000 in existing funds to replace fleet vehicles, statewide.(H: Yes) (S: Yes) "Terminology update: Replacing 'hospital' vehicles with 'fleet' vehicles." | 50.1.33 | - | Updated Language | Updated Language |

FY 2026 Budget Adjustments



D·B·H·D·D

FY 2026 Budget Adjustments

| Summary of Statewide Adjustments | Amount |
|---|---------------|
| Increase funds for the Teachers Retirement System to reflect an increase in the actuarially determined employer contribution rate from 20.78% to 21.91% | \$63,602 |
| Reflect an adjustment to agency premiums for Department of Administrative Services administered insurance programs | (\$1,554,023) |
| Reflect an adjustment for TeamWorks billing to meet projected expenditures | \$122,801 |
| Reduce funds to reflect an adjustment in the Federal Medical Assistance Percentage (FMAP) from 66.04% to 66.40% | (\$4,225,436) |

FY 2026 Budget Adjustments Continued

| Adult Addictive Diseases Services | Line # | Amount |
|--|---------------|---------------------|
| Replace state general funds with other funds for the expansion of Hepatitis C screening services at core behavioral health provider sites | 15.1.1 | (\$232,081) |
| Adult Developmental Disabilities Services | | Amount |
| Increase funds for 100 additional slots for the New Options Waiver (NOW) and the Comprehensive Supports Waiver Program (COMP) for individuals with intellectual and developmental disabilities | 15.3.4 | \$2,331,025 |
| Increase funds to annualize the cost of 100 New Options Waiver (NOW) and Comprehensive Supports Waiver Program (COMP) slots for individuals with intellectual and developmental disabilities | 15.3.5 | \$2,331,025 |
| Increase funds to annualize the operations of the Macon Crisis Stabilization and Diagnostic Center for individuals with intellectual and developmental disabilities | 15.3.6 | \$3,141,942 |
| Increase funds to annualize the provider rate increases recommended by the New Options Waiver (NOW) and Comprehensive Supports Waiver Program (COMP) provider rate study | 15.3.7 | \$26,714,565 |

FY 2026 Budget Adjustments Continued

| Adult Forensic Services | Line # | Amount |
|---|---------------|--------------------|
| Increase funds to annualize the operations of a 30-bed jail-based competency restoration program pilot in Dodge County | 15.4.1 | \$1,055,621 |
| Provide funds to operationalize a new 17-bed forensic unit at the Central State Hospital Allen Building in Milledgeville | 15.4.2 | \$1,953,245 |
| Provide funds to operationalize a new 20-bed forensic unit at the Georgia Regional Hospital Skilled Nursing Facility in Atlanta | 15.4.3 | \$1,185,089 |
| Provide funds to operationalize a new 30-bed Project New Hope forensic step-down unit at the West Central Georgia Regional Hospital in Columbus | 15.4.4 | \$1,618,742 |

FY 2026 Budget Adjustments Continued

| Adult Mental Health Services | Line # | Amount |
|--|----------------|---------------------|
| Increase funds to annualize the provider rate increases recommended by the Community Behavioral Health Rehabilitation Services (CBHRS) provider rate study | 15.5.3 | \$12,528,923 |
| Reduce funds for merit system assessment to reflect corrected salary data | 15.5.4 | (\$84,628) |
| Transfer funds from the Department of Community Health to the Department of Behavioral Health and Developmental Disabilities for four licensure programs to match agency roles and responsibilities | 15.5.6 | \$1,126,455 |
| Child and Adolescent Mental Health Services | | Amount |
| Increase funds to annualize the operations of the new Gateway child and adolescent crisis stabilization unit in Savannah | 15.9.1 | \$1,806,358 |
| Georgia State Financing and Investment Commission(GSFIC) | | Amount |
| Address Regional State Hospitals' significant capital needs according to the 2023 Georgia State Financing and Investment Commission (GSFIC) campus survey partially funded in House Bill 915 (2024 Session), statewide | 50.1.41 | \$10,000,000 |

DBHDD Crisis Bed Capacity



D·B·H·D·D

Strengthening Crisis Response: 2024 Bed Capacity Study

DBHDD Bed Capacity Study and Strategic Plan assists DBHDD in determining where and when to invest in additional bed capacity

Crisis System

- **Regional Concentration:** The greatest need for adult behavioral health beds is in Regions 1, 2, and 3
- **Projected Facility Demand:** To meet the growing demand for crisis beds, Georgia will require the addition of eight new crisis facilities by 2032
- **Urgent Near-Term Need:** Five out of these eight crisis facilities are urgently needed before 2025

Intellectual and Developmental Disabilities



D·B·H·D·D

Planning for the Future: Intellectual and Developmental Disabilities

1

Planning List Improvements: DBHDD is currently working with a third-party consultant (Guidehouse) to better forecast future demands

2

1915(c) Support Waiver: DBHDD is exploring an additional waiver option to meet current demand and provide services to Georgians using a lower funding cap

3

Community Residential Alternative Model: DBHDD has developed a comprehensive strategy to support individuals with Complex Care Needs (CCN). Three new settings styles approved for Georgia.

4

Crisis Stabilization and Diagnostic Center (CSDC): State's first crisis support center specifically designed to serve adults with intellectual and developmental disabilities

Strengthening Crisis Response: Serving Individuals with Developmental Disabilities



First-ever **Crisis Services
Diagnostic Center** in Macon



Rate Studies Update



D·B·H·D·D

Update: IDD and Behavioral Health Provider Rates

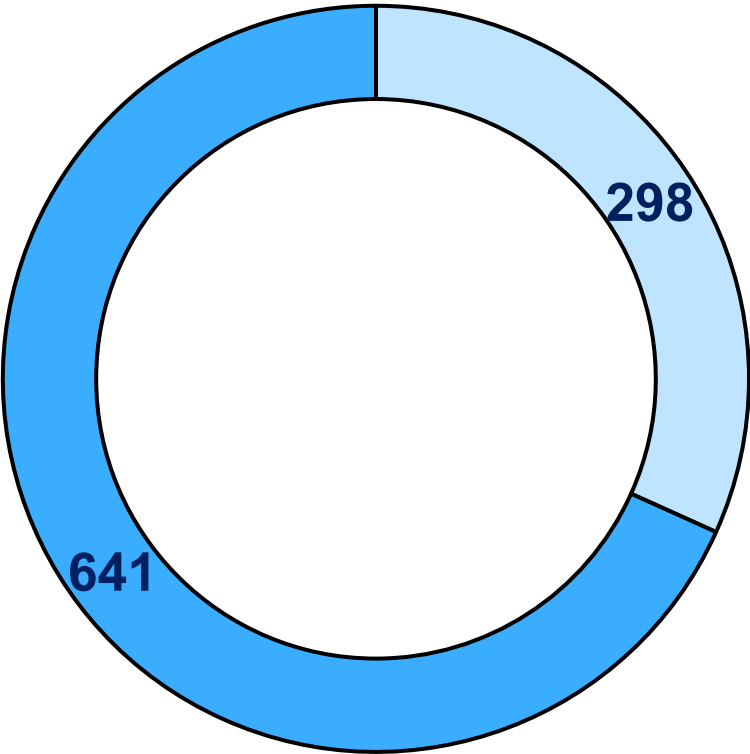
- **Key Updates on Rate Implementation for IDD & BH**
- **Rate Activation & Billing:**
 - All increases have been activated in the system
 - Providers began billing at the new rates starting **November 2024**
 - **90%** of FY 25 claims have been paid at the new, higher rates

Forensics



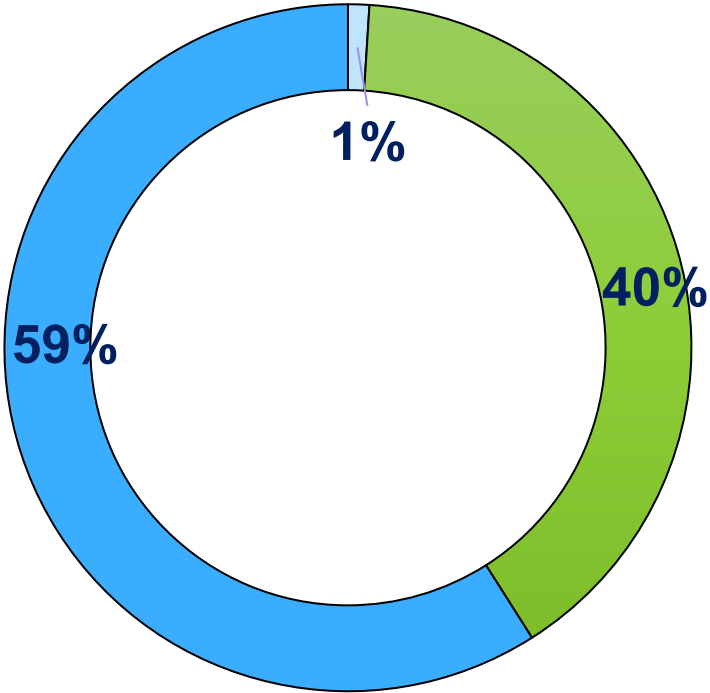
State Hospital Beds: Overview

State Hospital Bed Types



□ Adult Mental Health (298) ■ Forensic (641)

State Hospital Bed Utilization



□ Pretrial Evaluations
■ Competency Restoration
■ Civilly Committed Forensic Patients

**According to an independent study,
DBHDD is estimated to need an additional
232 hospital forensic beds by 2025**

Operation New Hope at GRHS

- Vocational and life skills training
- 30 beds total
- Opened November 2024

Operation New Hope at CSH

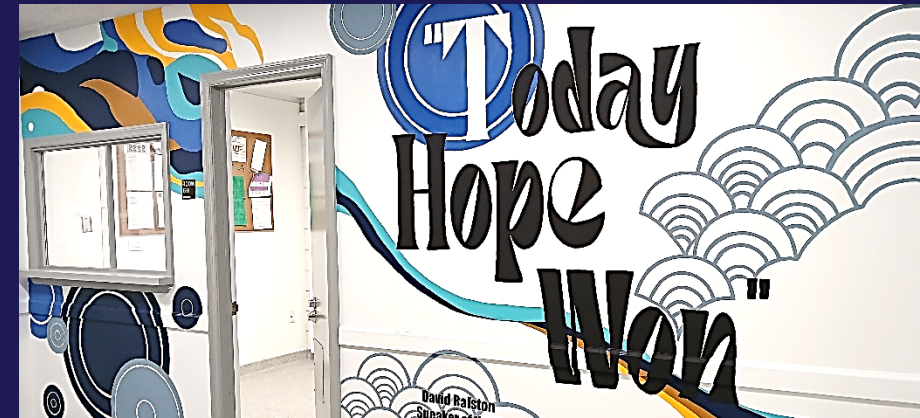
- Vocational and life skills training
- 17 beds total
- Opened January 2025

Jail Restoration Center in Dodge County

- 30 beds to reduce forensic waitlist backlog
- Opened December 2024

Skilled Nursing Unit at GRHA

- 16 beds for those in need of nursing home level of care
- Opening soon



BE D·B·H·D·D

Georgia Department of Behavioral Health & Developmental Disabilities

Kevin Tanner
Commissioner

February 27, 2025



Board Member Engagement

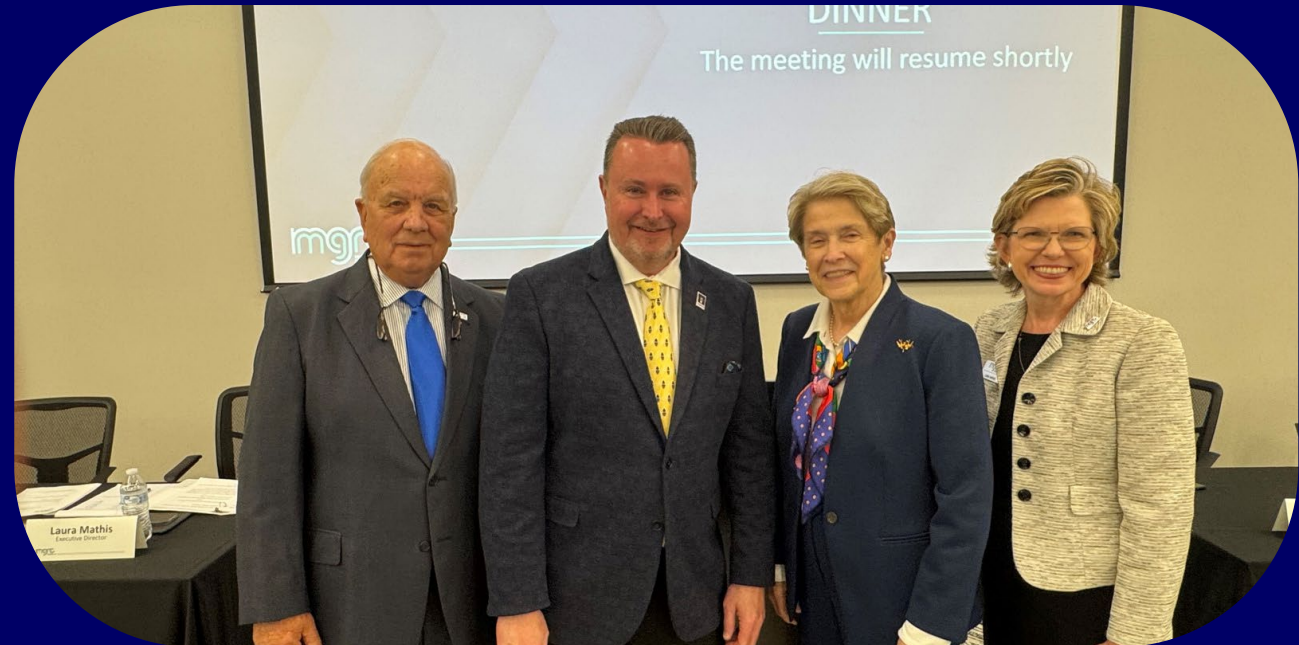
Diversified Facility Tour





Serenity Courtyard of Macon Ribbon Cutting Ceremony

Middle Georgia Regional Commission Council Meeting



Orange Grove Facility Tour



BE D·B·H·D·D

Georgia Department of Behavioral Health & Developmental Disabilities



Chair's Report

Lasa Joiner

Chair

Public Comment



The background of the entire slide is a close-up photograph of several hands of different skin tones being held together in a supportive grip. The lighting is soft and warm, creating a sense of care and connection.

BE D·B·H·D·D

Georgia Department of Behavioral Health & Developmental Disabilities

