

# Behavioral Health Coordinating Council Meeting

---

**BE D·B·H·D·D**

Georgia Department of Behavioral Health & Developmental Disabilities

August 12, 2020



# Agenda

Call to Order

---

Recovery Speaker

---

Action Items

---

BHCC Initiatives

---

Commissioner's Report

---

Next Meeting Date

---

# Call to Order

Judy Fitzgerald  
Commissioner

# Recovery Speaker

Paolo Mancini

RESPECT Institute of Georgia

# Action Items:

- Past Meeting Minutes

# BHCC Initiatives

# Interagency Director's Team

**Renee Johnson, MPA**

System of Care Director

Center of Excellence for Children's Behavioral Health

---



**D·B·H·D·D**

Georgia  
Department of  
Behavioral Health  
& Developmental  
Disabilities

# Overview

---

2021 SOC  
State Plan

Previous Plan  
Highlights



# 2021 SOC State Plan Overview

---

- FY21 - FY23 SOC State Plan Draft is completed
- Awaiting BHCC review and approval

## **Highlights**

- Arranged according to the care continuum (i.e., prevention/early screening, early intervention, intervention, late intervention, spans full continuum)
- Includes Infant and Early Childhood Mental Health (IECMH)

# Previous Plan Highlights

---

- Creation of behavioral health navigation guide for families and young adults
- Development of national and state policy briefs on telehealth and telemedicine
- Design of Trauma Informed Care Clinical Seminar
- Addition of Intensive Customized Care Coordination (IC3) Services to the Medicaid State Plan

# Transition Re-entry Committee

**Terri Timberlake, Ph.D.**

Director,

Office of Adult Mental Health

Division of Behavioral Health

DBHDD

**Co-Chairperson**

**Michelle Stanley**

Deputy Director,

Office of Reentry Services

Field Operations Division

DCS

**Co-Chairperson**



**D·B·H·D·D**

Georgia  
Department of  
Behavioral Health  
& Developmental  
Disabilities

# BHCC Transition Re-entry Committee

## Current Areas of Focus

- 1 Access to Respect Institute speakers for partnering agencies
- 2 Forensic Peer Mentor Program
- 3 Employment for returning citizens
- 4 Family Reunification Project

# Returning Citizens with Behavioral Health Classification

Returning citizens who paroled from GDC back into the community with classification Mental Health Level's 2, 3 and 4

Level	May 2020	June 2020	July 2020
Level 2- Outpatient Treatment	159	104	106
Level 3- Inpatient Moderate	17	23	14
Level 4- Inpatient Intensive	0	0	0
<b>TOTALS</b>	<b>176</b>	<b>127</b>	<b>120</b>

# Forensic Peer Mentor Program Peers Served FYTD (June 2020)

## Department of Corrections Facilities Day Reporting Centers

### 7 State Prisons (5-Positions filled)

- Lee Arrendale State
- Pulaski State
- Baldwin State
- Phillips State
- Rutledge State
- Metro Atlanta
- Phillips Transitional Center

**289 returning citizens served**

### 8 Day Reporting Centers (5-Positions filled)

- Atlanta DRC,
- Athens DRC
- Griffin DRC
- Morrow DRC
- Gainesville DRC
- Gwinnett DRC
- Columbus DRC
- Rome DRC

**244 served**

## State Hospitals Mental Health Treatment Courts

### 2 State Hospitals (1-Position filled)

- Georgia Regional (Atlanta)
- Central State (Milledgeville)

**24 served**

### 6 Mental Health Treatment Courts (5-Positions filled)

- Avita (Hall/Dawson Co.)
- Cobb CSB (Cobb Co.)
- Highland Rivers (Fannin/Gilmer/Pickens Co)
- River Edge CSB (Bibb Co)
- McIntosh Trail (Spalding Co.)

**137 # served**

# Peers Served/Enrolled

**Department of Corrections Facilities**  
**Day Reporting Centers**

**State Hospitals**  
**Mental Health Treatment Courts**

**State Prisons**

**FY20**  
Peers Served- 289  
New Enrolled- 198

**Day Reporting Centers**

**FY20**  
Peers Served- 244  
New Enrolled- 156

**State Hospitals**

**FY20**  
Peers Served- 24  
New Enrolled- 16

**Mental Health Treatment Courts**

**FY20**  
Peers Served- 294  
New Enrolled- 72

**Total Peers Served FY20 - 851**

# Forensic Peer Mentor Program Outcomes FY20

## Recidivism/Re-arrest Readmissions

### Peers Served Post-Prison Release in Community List: 88

Psychiatric hospital readmission:	(3)	4%
Re-arrest:	(6)	7%
Re-Conviction:	(0)	
Probation/Parole Violations:	(0)	

### Peers Served with Daily Report Centers: 244

Psychiatric hospital admission:	(2)	<1%
Re-arrest:	(5)	2%
Re-Conviction:	(2)	<1%
Probation/Parole Violations:	(16)	7%



# Forensic Peer Mentors in Treatment Courts FYTD

## Program Outcome Highlights

### Participants Served by AMH Funded FPM

MHC Participants working with FPM	137
Permanently Housed	92%
Employed/Benefits/Student	83%
Episodes of Homelessness	(1) <1%
Re-arrests (new charges)	(6) 3.6%
Readmission to CSU/Psyc Hospital	(5) 4.4%

### All Courts AMH Funded

Individuals served- 289  
Graduates- 42



Ramona (right) with The Honorable Judge Mary Staley, Cobb County Superior Court

“Having been in the system as a convicted felon in that revolving door of substance use, illness, and trouble with law enforcement, as well as my experience with homelessness, despair, estrangement from family and profound loneliness [gives] me a perspective that comes with that lived experience. I know that if I can recover, anyone can. I try to offer unconditional positive regard and carry hope for others until people find it for themselves, because Recovery is Real and Possible and available to All.”

--Ramona Burkett, Forensic Peer Mentor  
Cobb County Mental Health Court/Cobb Douglas CSB

# BHCC – Transition Re-entry committee

## Employment for returning citizens

### Engage

- Individuals with criminal justice involvement and an SPMI with opportunities for gainful employment
- Employers in dialogue that leads to employing talent from this pool

### Educate

- Individuals on strategies for maintaining employment (including soft skills)
- Employers about the benefits of recruiting and hiring from this rehabilitated talent pool

### Connect

- Individuals with opportunities
- Employers to benefits and recruitment resources
- Agencies doing similar work (**DCS, GVRA, DOL, DOJ, Georgia Justice Project**)

# Family Reunification Initiative

## **FREE - Family Reunification, Education, & Empowerment Project**

*Psychoeducation, Counseling, and Peer Support to Facilitate Successful Re-Entry for Georgia's Returning Citizens*

New initiative that will be a family focused-peer facilitated multi-session project

- Forensic Peer Mentors and *Certified* Peer Specialist-Parent
- Returning Citizens and their family/support network
- Improving communication
- Strengthen family support
- Supporting successful transition into the community



Proposed Pilot sites: Metro Atlanta Reentry Center/Central State Prison

Proposed 20 Returning Citizens in first Cohort

# Commissioner's Report:

Judy Fitzgerald  
Commissioner

# Legislative Update

**Renee Johnson**

Director, Georgia State University Georgia Health Policy Center

---



**D·B·H·D·D**

Georgia Department of Behavioral Health  
& Developmental Disabilities

# DBHDD's Legislative Perspective

**Doug Reineke**

Director of Legislative Affairs

---



**D·B·H·D·D**

Georgia Department of Behavioral Health  
& Developmental Disabilities

# 2020-2025 Georgia Suicide Prevention Strategic Plan

**BE D·B·H·D·D**

Georgia Department of Behavioral Health & Developmental Disabilities

Jill D. Mays, Director  
Office of Behavioral Health Prevention &  
Federal Grants





**Jill Mays**

**Director, Office of Behavioral  
Health Prevention & Federal  
Grants (OBHPFG)**



# Charting the Course for Suicide Prevention

## *2020-2025 Georgia Suicide Prevention Strategic Plan*



# Projects

Garrett Lee  
Smith (GLS)  
Youth Suicide  
Prevention  
Program

Strategic  
Prevention  
Framework  
(SPF) for Suicide  
Prevention

Mental Health  
Awareness  
Training (MHAT)  
Project

Suicide  
Prevention  
Coalitions

DBHDD Policies  
01-118 & 01-126

Survivor  
Support  
Services

Networks &  
Technical  
Assistance

COVID-19  
Emergency  
Suicide  
Prevention

# Suicide in Georgia

# 2018 At-a-Glance



**1,565**

Preventable  
deaths by suicide



Average of

**30**

deaths a week or

**4**

lives lost daily



**78%** of suicide  
deaths were men



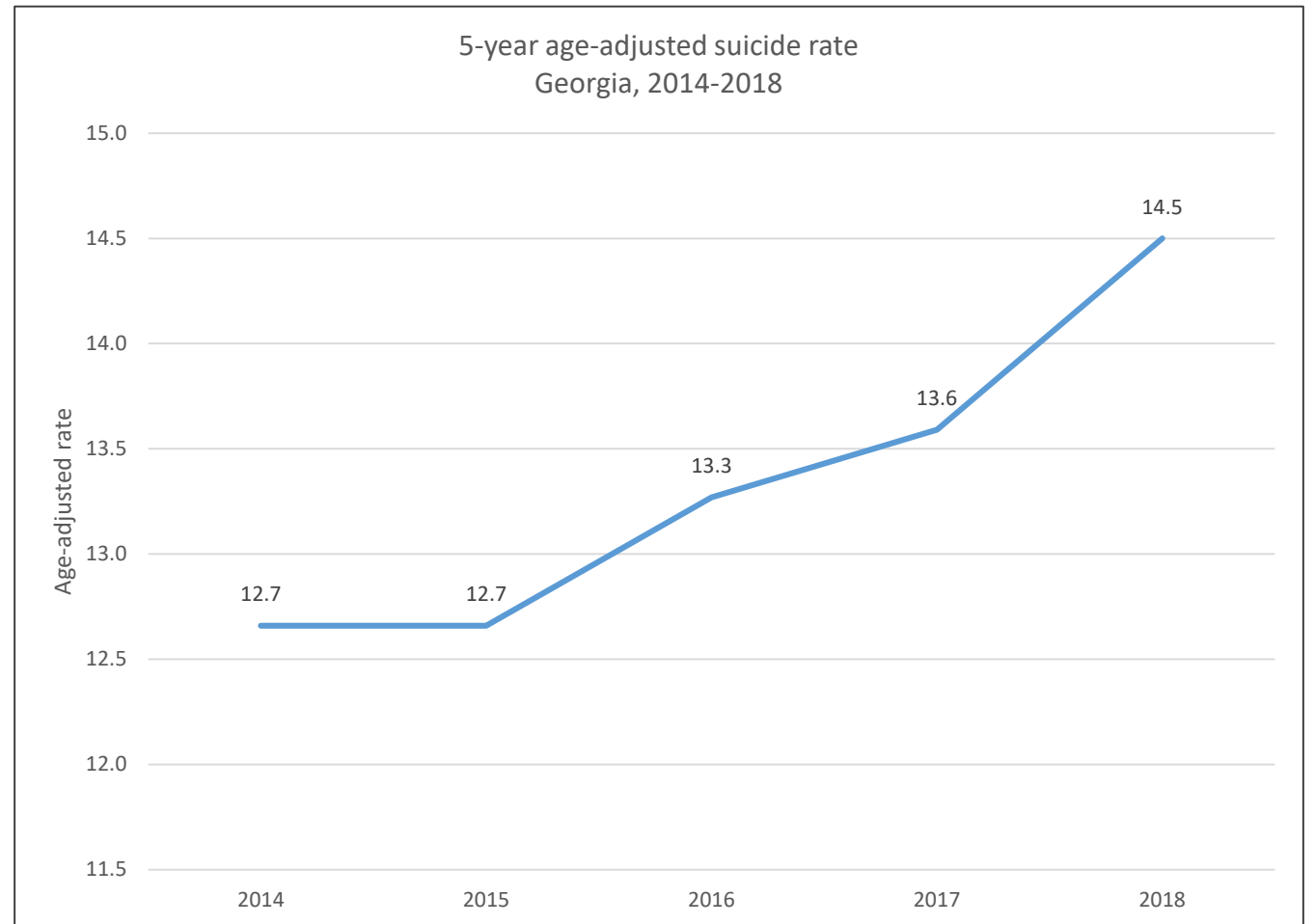
**63%** of suicides  
involved firearms



Average suicide  
rates were **higher**  
in rural counties

# Suicide in Georgia: 2018

- 1,565 suicide deaths
- 2<sup>nd</sup> leading cause of death for those ages 10-34
- 30+ attempts for every suicide death
- Higher than the national age-adjusted suicide rate



# American Foundation of Suicide Prevention

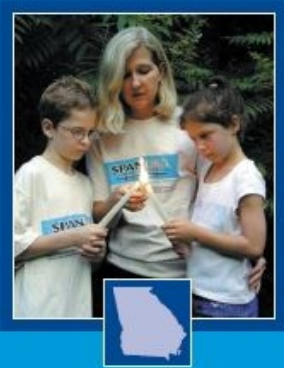
“Suicide cost Georgia a total of \$1,318,204,000 combined lifetime medical and work loss cost in 2010, or an average of \$1,163,463 per suicide death.”

# State Plan History

# Through the Years

Saving Lives In Georgia

Together We Can

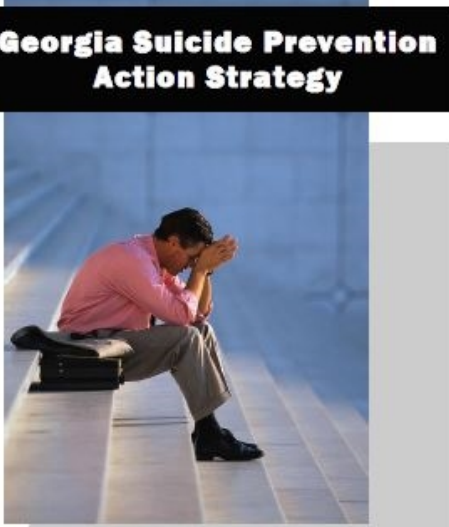


**Georgia Suicide Prevention Plan**  
Strengthening Protective Factors and Reducing Risk Factors

June 30, 2001

2001

**Georgia Suicide Prevention  
Action Strategy**



Suicide is a tragedy that claims the lives of hundreds of Georgians each year—mothers and daughters, fathers and sons, brothers and sisters, friends, neighbors. Who dies by suicide? People you meet at work, the grocery store, the gym, and places of worship; children in our schools, young adults in colleges and universities, veterans, and older people...

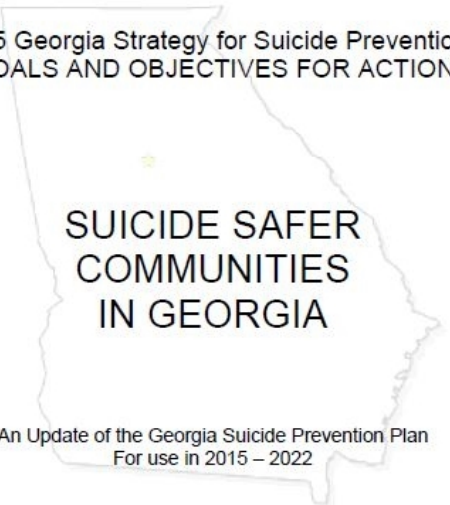
...Maybe someone you know. Maybe someone you love.

**Take Action, You Can Save Lives in Georgia!**

2008

Georgia Suicide Prevention Plan  
Strategy for Suicide Prevention 2015

2015 Georgia Strategy for Suicide Prevention:  
GOALS AND OBJECTIVES FOR ACTION



**SUICIDE SAFER  
COMMUNITIES  
IN GEORGIA**

An Update of the Georgia Suicide Prevention Plan  
For use in 2015 – 2022

2015







# 2020-2025 Georgia Suicide Prevention Strategic Plan



# Elements of the Strategic Plan

Foreword

Executive  
Summary

Georgia  
Suicide Data

Suicide Factors

Suicide Prevention  
Efforts in Georgia

Overview of  
Priority Goals

Goals, Objectives,  
& Strategies

References

Resources

# Strategic Plan: Goals 1-3

Promote the integration of suicide prevention as a core component of public and private behavioral health and healthcare systems.

Increase public knowledge of suicide risk, warning signs, protective factors, and precipitating factors across the lifespan.

Build capacity for protective factors, resiliency, and stigma-reduction in communities and schools.

# Strategic Plan: Goals 4-6

Support the adoption of suicide safe messaging through media and public education.

Target high burden counties and communities to promote the adoption of evidence-based and evidence-informed suicide prevention and intervention strategies.

Prioritize at-risk populations to promote the adoption of evidence-based and evidence-informed suicide prevention and intervention strategies.

# Strategic Plan: Goals 7-9

Increase efforts to reduce access to lethal means of suicide.

Expand evidence-based suicide prevention trainings for clinicians and gatekeepers.

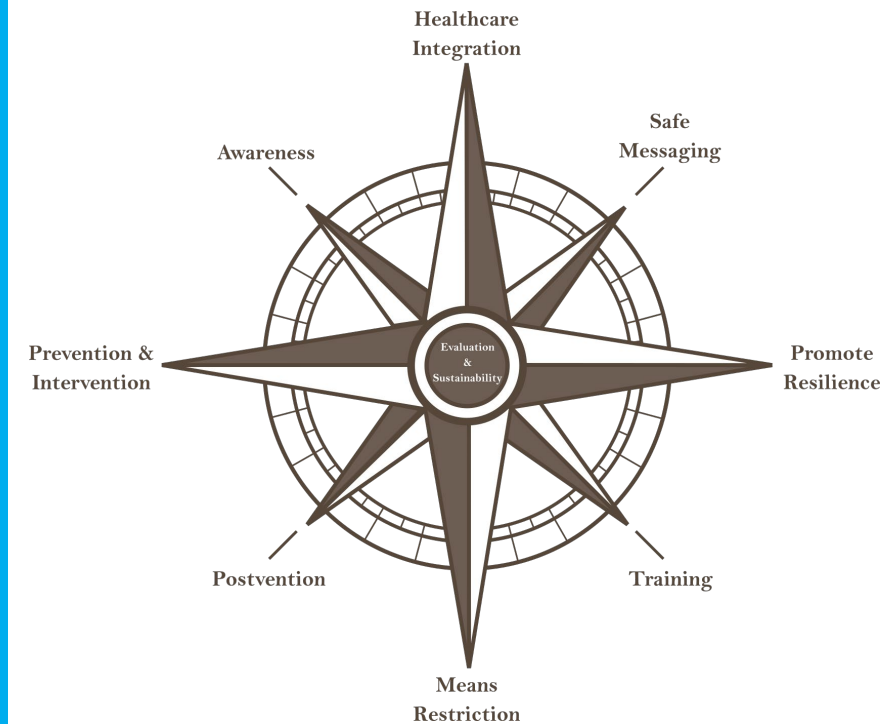
Implement postvention best practices to provide care and support to individuals and communities.



# Strategic Plan: Goals 10-11

Increase the timeliness and usefulness of data systems relevant to suicide prevention.

Sustain the suicide prevention efforts outlined in this strategic plan.



# Evaluation Plan

- Will include measurable outcomes for each strategy in the plan.
- Define evaluation year and overall plan targets
- Completed with data collected from stakeholders statewide

Next Steps

# Next Steps

1

## **Georgia Suicide Prevention Task Force**

- Diverse representation
- Annually selected co-chair
- Disseminate, Champion, Oversee, Evaluate

2

## **Evaluation Plan – Year 1, Year 3, Year 5 targets**

3

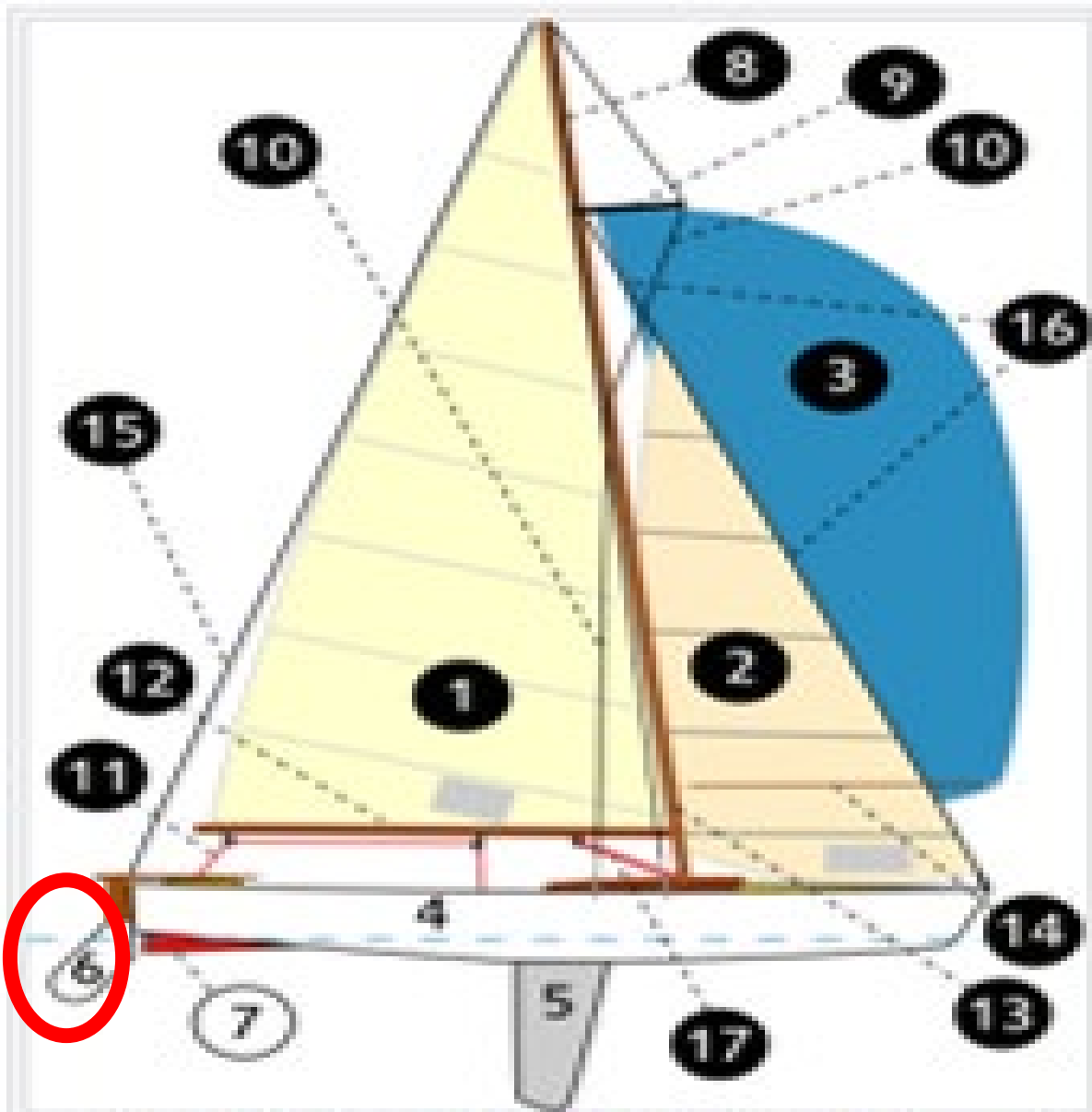
## **Suicide Prevention Clinician & Trainer Networks**

# Strategic Plan

---

The 2020-2025 Georgia Suicide Prevention Strategic Plan can be downloaded from DBHDD's Suicide Prevention page:

<https://dbhdd.georgia.gov/bh-prevention/suicide-prevention>



**BE a Rudder!**

- 1 – mainsail
- 2 – staysail
- 3 – Spinnaker
- 4 – hull
- 5 – keel
- 6 – rudder
- 7 – skag
- 8 – mast
- 9 – Spreader
- 10 – Shroud
- 11 – sheet
- 12 – boom
- 13 – mast
- 14 – Spinnaker pole
- 15 – Backstay

# Questions

Next BHCC Meeting

November 18, 2020