

Behavioral Health Coordinating Council Meeting

BE D·B·H·D·D

Georgia Department of Behavioral Health & Developmental Disabilities

February 13, 2019



Agenda

Call to Order

Recovery Speaker

Action Items

BHCC Initiatives

Commissioner's Report

Next Meeting Date

Call to Order

Judy Fitzgerald
Commissioner

Recovery Speaker

Suzanne Kilgore

RESPECT Institute of Georgia

Action Items

- Minutes (November 14, 2018)

BHCC Initiatives

Interagency Directors Team

Danté McKay, JD, MPA

Director, Office of Children, Young
Adults, and Families

Overview

SOC State Plan Implementation

Georgia Apex Program

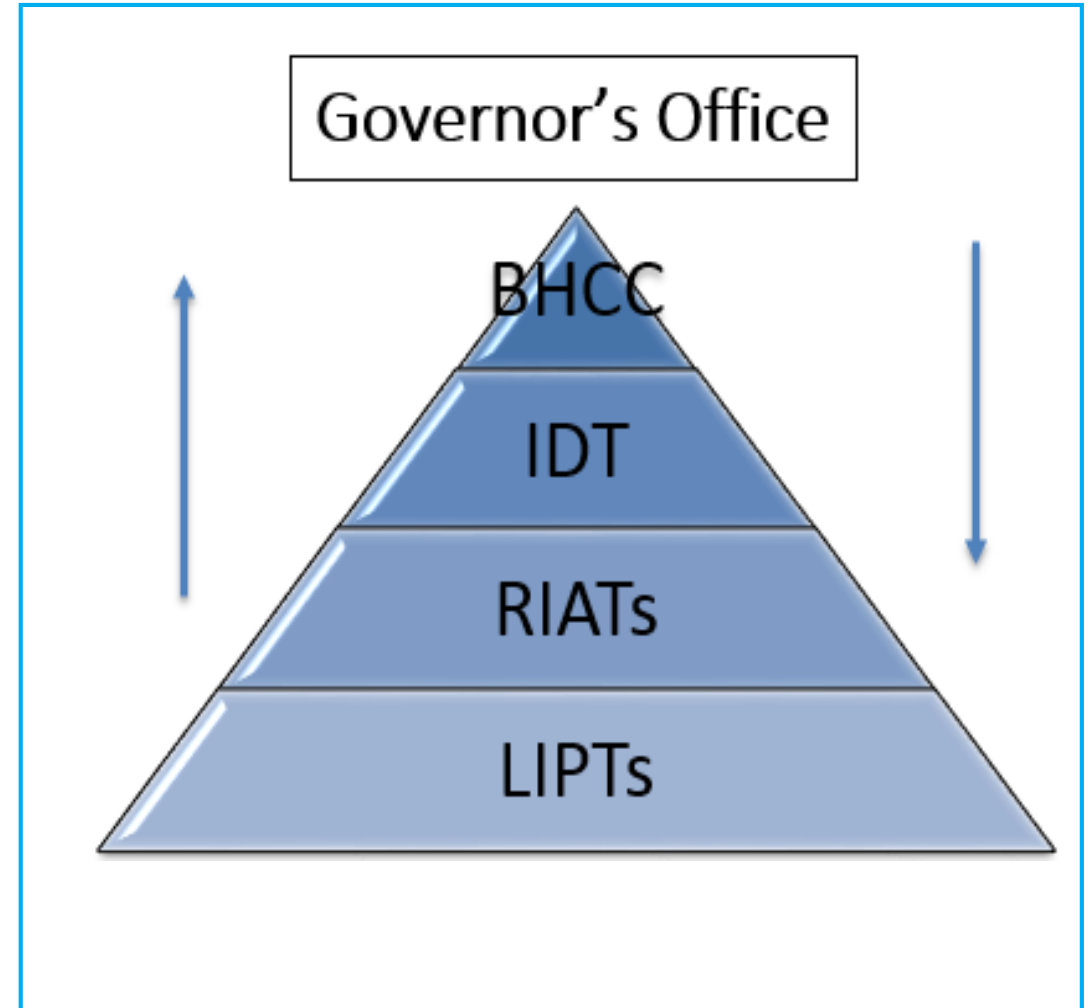
New SOC Expansion Grant



System of Care Values, Principles, and Infrastructure

SAMHSA:

- Spectrum of effective, community-based services and supports;
- Organized into a coordinated network that;
- Builds meaningful partnerships with families and youth; and
- Addresses cultural and linguistic needs, in order to improve functioning at home, in school, in the community.

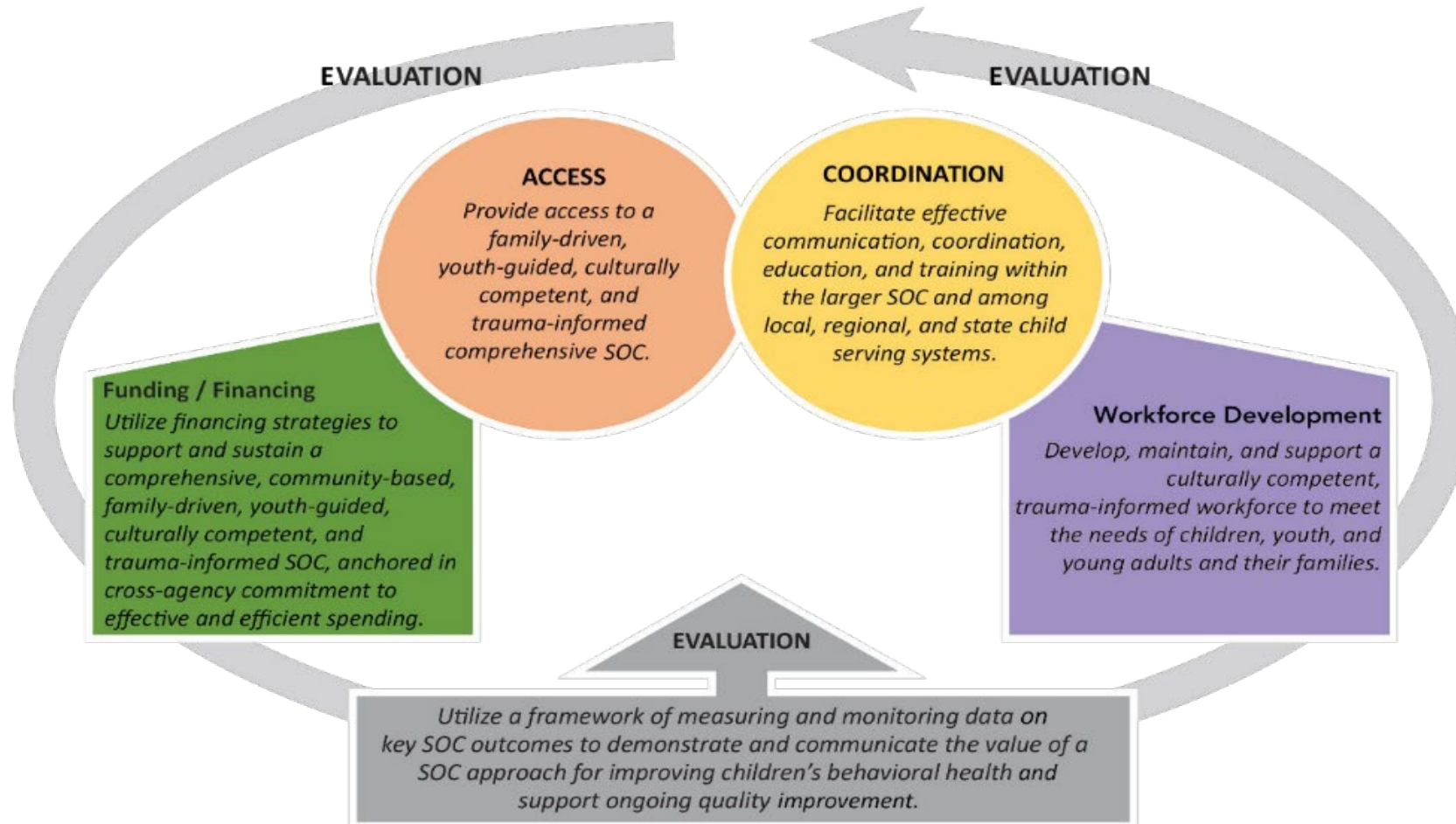


Interagency Directors Team

1. System of Care State Plan
2. The IDT receives monthly updates and informs the following:
 - System of Care Expansion Grant (DBHDD)
 - Project LAUNCH (DPH)
 - Project AWARE (DOE)
 - Local Interagency Planning Team(s)
 - Commission on Children's Mental Health (DBHDD)

Georgia SOC State Plan – 5 Focus Areas

SOC Plan Development: Areas of Influence / Goals

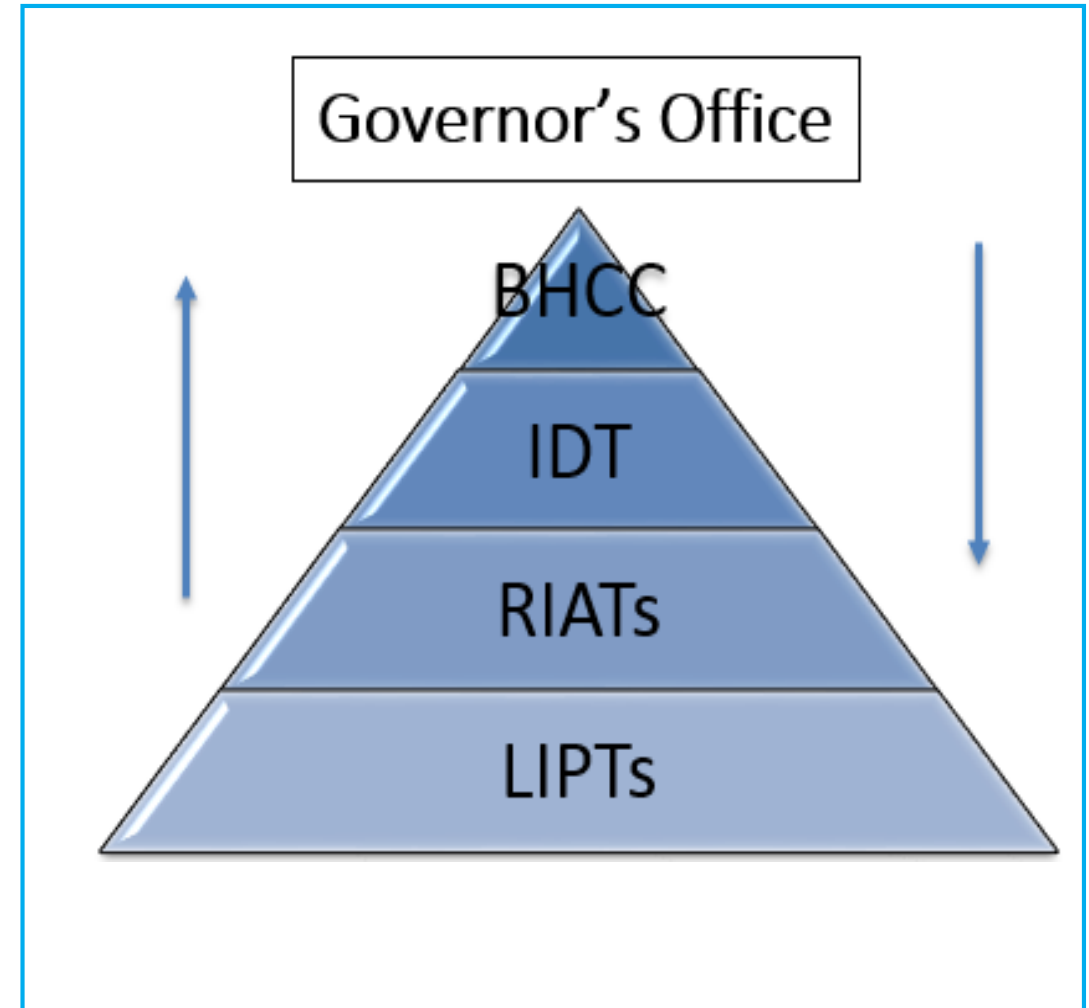


Georgia SOC State Plan – Year 1 (FY 2018)

- **Collected data** from more than 700 school counselors on school-based mental health.
- *Created and disseminated behavioral health services **public education materials**. (Access, 1.3)*
- Created process and baseline **measures** to track the used of intensive customized care coordination (IC3) services.
- **Mapped** behavioral health telemedicine services, sites, and resources in Georgia.
- Researched and developed a **webpage** of recommended behavioral health evidence-based practice (EBP) clearinghouses.
- Conducted a **crosswalk** of agency member workforce trainings, and identified key SOC workforce competencies to promote.
- Developed initial **measures** and **recommended** next steps in order to evaluate the SOC in Georgia.

Georgia SOC State Plan – Year 2 (FY 2019)

- Pursuing solutions:
 - Shared interagency data hub
 - Behavioral health workforce shortages
- *Building and maintaining feedback loops between local, regional, and state systems (Coordination, 2.1)*
- Pursuing collaborative funding initiatives
- *Finalizing evaluation methods and tools (Evaluation, 5.2)*
- Advisory role



Environment

System of Care State Plan

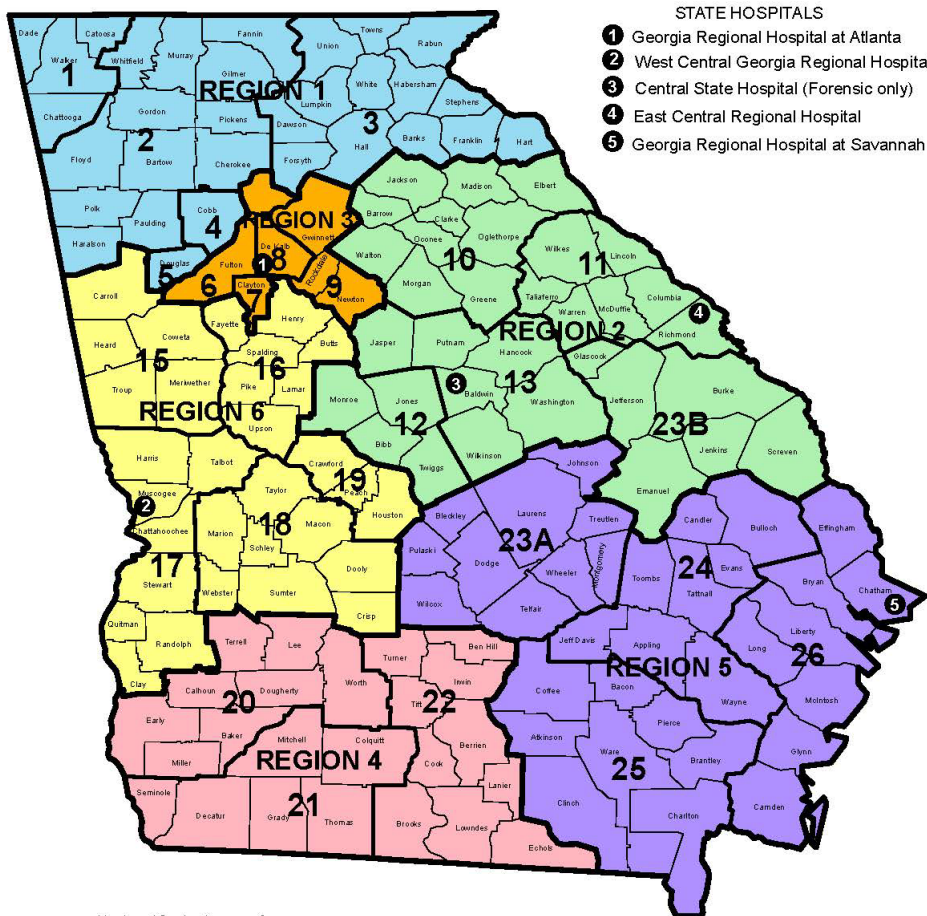
Increase behavioral health services in schools (Access, 1.2)

Commission on Children's Mental Health

Increase access to behavioral services for Georgia's school-aged children by sustaining and expanding the **Georgia Apex Program (GAP)** for school-based mental health

Apex Expansion 2.0 – Notice of Intent to Award

Georgia Department of Behavioral Health & Developmental Disabilities
Regional Map with Community Service Areas
Effective July 1, 2017



Region 1

- Avita Community Partners
- Highland Rivers

Region 2

- CSB of Middle Georgia
- River Edge BH

Region 3

- Chris 180
- DeKalb CSB
- View Point Health

Region 4

- Aspire BH
- Vashti Center*

Region 5

- Gateway BHS*
- Unison BH

Region 6

- New Horizons BH
- Tanner Medical Center *

System of Care Expansion Grant - Project AIME

- Increase **awareness** for the individuals that we serve about the services and supports available to them in their communities;
- **Integrate** family and youth peer support in multiple levels in their communities to build and sustain systems of care that leads to a life of recovery and independence;
- **Mobilize** services and supports with easy access to youth and their families with SED/SMI outside of clinic settings; and
- **Educate** community partners, stakeholders, youth, families, child and adult serving agencies on a SOC to sustain partnerships and realize a return on investment of SOC efforts.

Transition and Re-entry Committee

Terri Timberlake, Ph.D.
Director, Office of Adult Mental Health

Michelle Stanley
Deputy Director
Department of Community Supervision

BHCC transition reentry committee current areas of focus

- 1 Access to Respect Institute speakers for partnering agencies
- 2 Forensic Peer Mentor Program
- 3 Employment for returning citizens
- 4 Housing access
- 5 Family Reunification Project

Georgia Department of Corrections

Returning Citizens with Behavioral Health Classification

Returning citizens who paroled from GDC back into the community with classification Mental Health Levels 2, 3, and 4

Level 2	Level 2	Level 2
Level 3	Level 3	Level 3
Level 4	Level 4	Level 4

Forensic Peer Mentor Program FY 2019

Department of Corrections facilities Day Reporting Centers

5 State Prisons

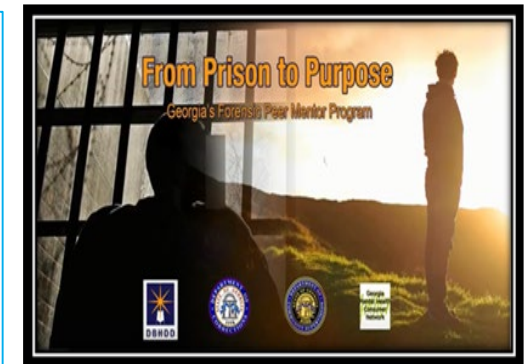
- Lee Arrendale State Prison
- Pulaski State Prison
- Baldwin State Prison
- Phillips State Prison
- Rutledge State Prison

6 Day Reporting Centers

- Atlanta DRC
- Griffin DRC
- Morrow DRC
- Gainesville DRC
- Columbus DRC
- Rome DRC

Program Outcome Highlights

- **74** returning citizens enrolled at GDC facilities fiscal year to date
- **124** returning citizens enrolled at DRC facilities fiscal year to date



“From Prison to Purpose” video which can be viewed on DBHDD & partner websites (**DCS, GDC, GMHCN, GVRA**)

Forensic Peer Mentor Program YTD

Recidivism/Re-arrest

Psychiatric hospital readmission post release YTD	Re-arrest/ Conviction post release YTD
1 (<i>within last 12 months</i>)	1 re-arrest 0 re-convictions 1 parole/probation revocation

Program Outcome Highlights

Community-Based Referral and Linkages YTD

Transitional Sessions	5,611
Behavioral Health Services	142
Substance Use Treatment	373
Employment Assistance	368
Housing	104
Primary Health	90

BHCC – Transition Re-entry Committee



Employment for Returning Citizens

Development of employer council with focus on

- Employer education and awareness
- Identifying policies that may present as barriers to gainful employment
- Bonding
- Tax benefits
- Maximize GVRA and DOL services for this population
- Enhancing job readiness skills prior to re-entry

Family Reunification Initiative

FREE

**Family Reunification, Education, & Empowerment Project
*Psychoeducation, Counseling, and Peer Support to Facilitate Successful Re-Entry for Georgia's Returning Citizens***

Family-focused, peer-facilitated, multi-session project

- Forensic Peer Mentors and *Certified* Peer Specialist-Parent
- Returning Citizens and their family/ support network
- Improving communication
- Strengthen family support
- Supporting successful transition into the community



Pilot site: Metro State Prison “Go Live”
date: May 1, 2019

Proposed 20 returning citizens in first Cohort

Commissioner's Report

Judy Fitzgerald
Commissioner

Peer Services in Georgia

Tony Sanchez, CPS-AD, CADDC

Director, Office of Recovery Transformation

Georgia's Certified Peer Specialists

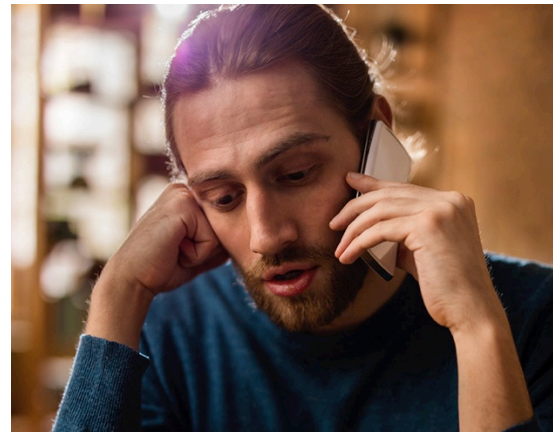
Trained



Empower



Lived
Experience

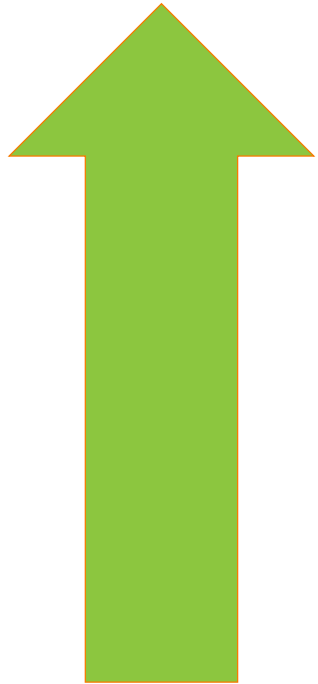


Sustain

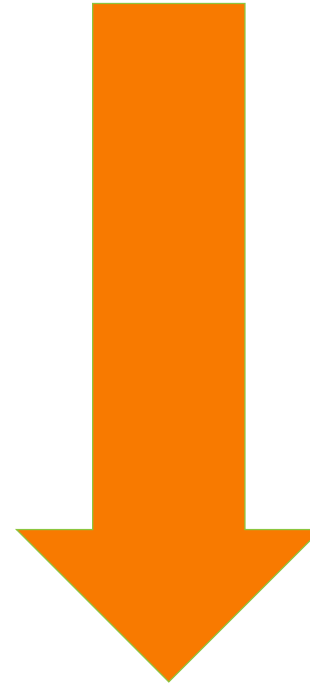


Impact of Peer Support Services

Among other outcomes ...



- “Hard-to-reach” engaged
- Uptake of services
- Employment
- Housing
- Provider relationships
- Quality of life



- Substance use
- ED visits
- Inpatient days
- Re-hospitalizations
- Re-incarceration
- Cost of services

Sources: Mental Health America, *Evidence for Peer Support*, May 2018 (available online); L. Mangrum, R. Spence, M. Nichols, and C. Peterson, *Recovery Support Services Project FY 2015 Final Evaluation Report*, University of Texas Addiction Research Institute, 2016.

National Leader

1

1st in Medicaid reimbursable CPS-MH

2

Expanded Medicaid coverage to include addiction recovery and whole health

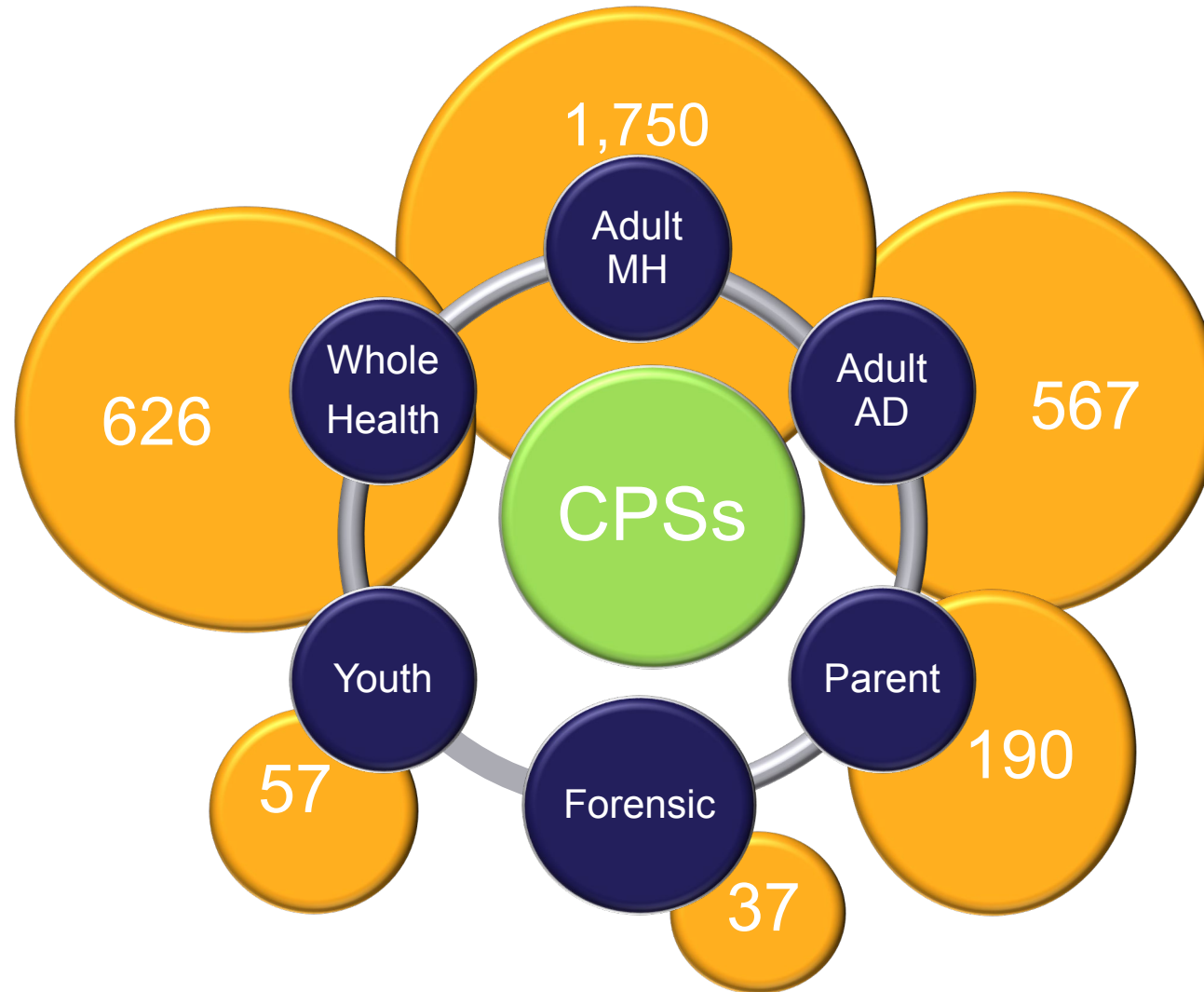
3

CPS-Y an CPS-P Medicaid reimbursable as of late 2017

Georgia's CPS Program Today

2,500
individuals

serving in
3,200+
roles



Where Peers are working within our Adult and Child/Adolescent Array of Community and Hospital Behavioral Health Services

Assertive Community Treatment (ACT)
Community Support Team (CST)

Core Outpatient
Peer Respite Center
Medication Assisted Treatment (MAT)
Substance Abuse Intensive Outpatient

Addiction Recovery Support Centers
Addictive Disease Clubhouse

First Episode Psychosis (FEP)
Residential Detoxification
Family Support Organizations

Crisis Stabilization Unit (CSU)
Behavioral Health Crisis Center (BHCC)

State Psychiatric Inpatient
Prison & Day Reporting Centers

Mental Health and Addictive Disease Treatment Courts

Mobile Crisis Response Service (MCRS)
Women's Treatment and Recovery Services (WTRS)

Enhancing Peer Services



- Policy
- Training
- Youth Leadership Academy
- Addiction Recovery Support Centers
- RFT
- Community Transitions Pilot Project

Taking a look ahead at the Opportunities for Growth and Expansion



Formal and Informal Input

My role in the organization is not understood.

I helped the peer dream again.

Bring CPSs and managers together so they will know what we do.

Help give us a voice inside our agencies.

Facilitate appreciation and adoption of CPSs and recovery.

Support me with a career ladder so I don't have to become a clinician to move up in the agency.

6 Urgent Tasks

1. Create a shared vision for peer services

2. Increase provider readiness and capacity to use peers *effectively*

3. Develop a career ladders for peers

6 Urgent Tasks

4. Enhance
Peer
Supervision

5. Deploy
Peers
Strategically

6. Evaluate
Impact



Thank you!

Legislative Update

Doug Reineke

Director of Legislative Affairs

Next BHCC Meeting

May 15, 2019



BE D·B·H·D·D

Georgia Department of Behavioral Health & Developmental Disabilities

