



THE GEORGIA APEX PROGRAM: SCHOOL-BASED MENTAL HEALTH SERVICES

Year 6 | July 2020 to June 2021

Program Overview

The Georgia Apex Program (also referred to as the Apex Program or Apex) is a partnership between community-based mental health providers and local school districts, with support from the Georgia Department of Behavioral Health and Developmental Disabilities (DBHDD), that has been increasing access to mental health services for Georgia students since its inception in 2015.

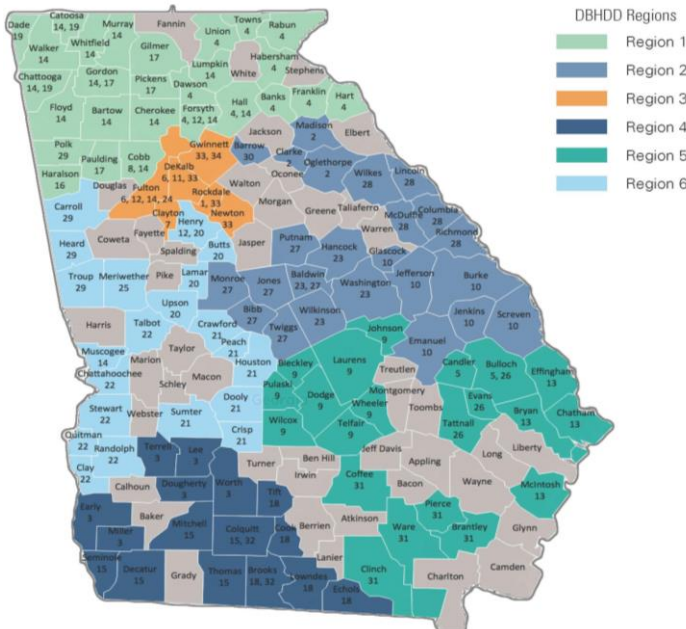
Program Goals

- Increasing access to mental health services for children and youth
- Providing early detection of child and adolescent mental health needs
- Strengthening coordination between community-based mental health providers and local schools.

YEAR 6 BY THE NUMBERS

- 34** Apex behavioral health provider agencies
- 731** schools involved in the Apex Program
- 125** school districts involved in the Apex Program
- 116** counties involved in the Apex Program
- 681** schools reporting engaged partnership
- 12,203** referrals made for school-based mental health services
- 2,742** total students receiving first-time services
- 10,962** unique students served
- 42,655** Tier 2 and 3 services provided
- 56,413** telemedicine services provided

GEORGIA APEX PROGRAM REACH (YEAR 6)



96%

of parents were satisfied with their child's services

87%

of parents reported improved ability to advocate for their child

72%

of parents reported that their child is doing better in schools



**CENTER OF EXCELLENCE FOR
CHILDREN'S BEHAVIORAL HEALTH**
integrating research, policy, and practice



DBHDD

404.413.0314
ghpc.gsu.edu
ghpc@gsu.edu

Georgia
Health Policy
Center

Georgia State
University | **ANDREW YOUNG SCHOOL**
OF POLICY STUDIES

APEX QUANTITATIVE INSIGHTS

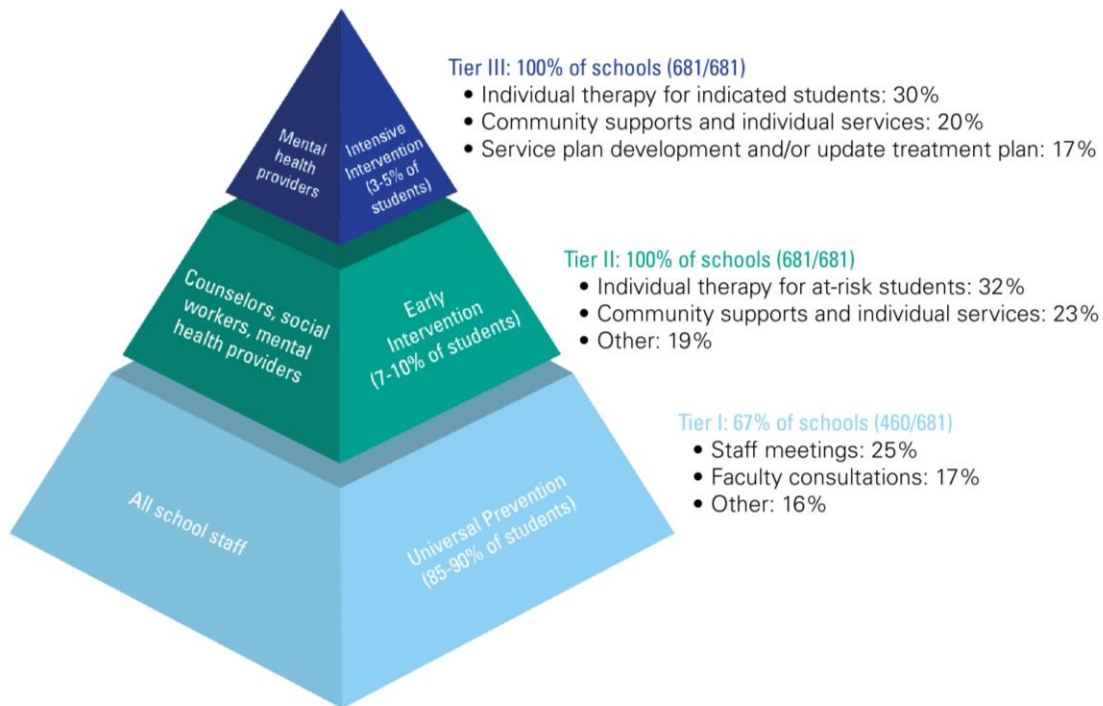
Top Referral Reasons:

Classroom conduct (58%)
 Behavior outside the classroom (58%)
 Depression (55%)

Top Diagnoses:

ADHD (2,683 students)
 Depressive disorder (1,575 students)
 Adjustment disorder (1,108 students)

MENTAL HEALTH PROMOTION WITHIN APEX SCHOOLS: Apex prioritizes addressing the need for intensive intervention for students identified as living with mental health concerns — the top tier of the pyramid.



Adapted from: Bieber B, Hotchkiss & Palmer, B. (2007). *A Guide to School Mental Health Services*. Denver, CO: Colorado Department of Education.]

APEX GROWTH ACROSS 6 YEARS (2015-2021)



References:

Center of Excellence for Children's Behavioral Health. (2021). The Georgia apex program annual evaluation results.

Center of Excellence for Children's Behavioral Health
 Georgia Health Policy Center
 Georgia State University
 55 Park Place NE, 8th floor • Atlanta, GA 30303
 404.413.0075 (phone) • 404.413.0316 (fax)
 gaceonline.gsu.edu

Office of Children, Young Adults and Families
 Division of Behavioral Health
 Georgia Department of Behavioral Health and Developmental Disabilities
 Two Peachtree Street, 24th floor • Atlanta, GA 30303
 404.657.2252 (phone)
 dbhdd.georgia.gov