

Behavioral Health Coordinating Council Meeting

BE D·B·H·D·D

Georgia Department of Behavioral Health & Developmental Disabilities

May 16, 2018



Agenda

Call to Order

Recovery Speaker

Action Items

BHCC Initiatives

Commissioner's Report

Next Meeting Date

Call to Order

Judy Fitzgerald
Commissioner

Recovery Speaker

Jodi Dodson

Georgia Council on Substance Abuse

Action Items

- Minutes (November 15, 2017)
- 2017 Annual Report
- IDT Memorandum of Understanding

BHCC Initiatives

Behavioral Health Coordinating Council Interagency Directors Team Update

Danté McKay, JD, MPA

Director, Office of Children, Young Adults, and Families
DBHDD



D·B·H·D·D

Georgia Department of Behavioral Health
& Developmental Disabilities

Overview

System of
Care
Framework

Georgia
System of
Care
State Plan

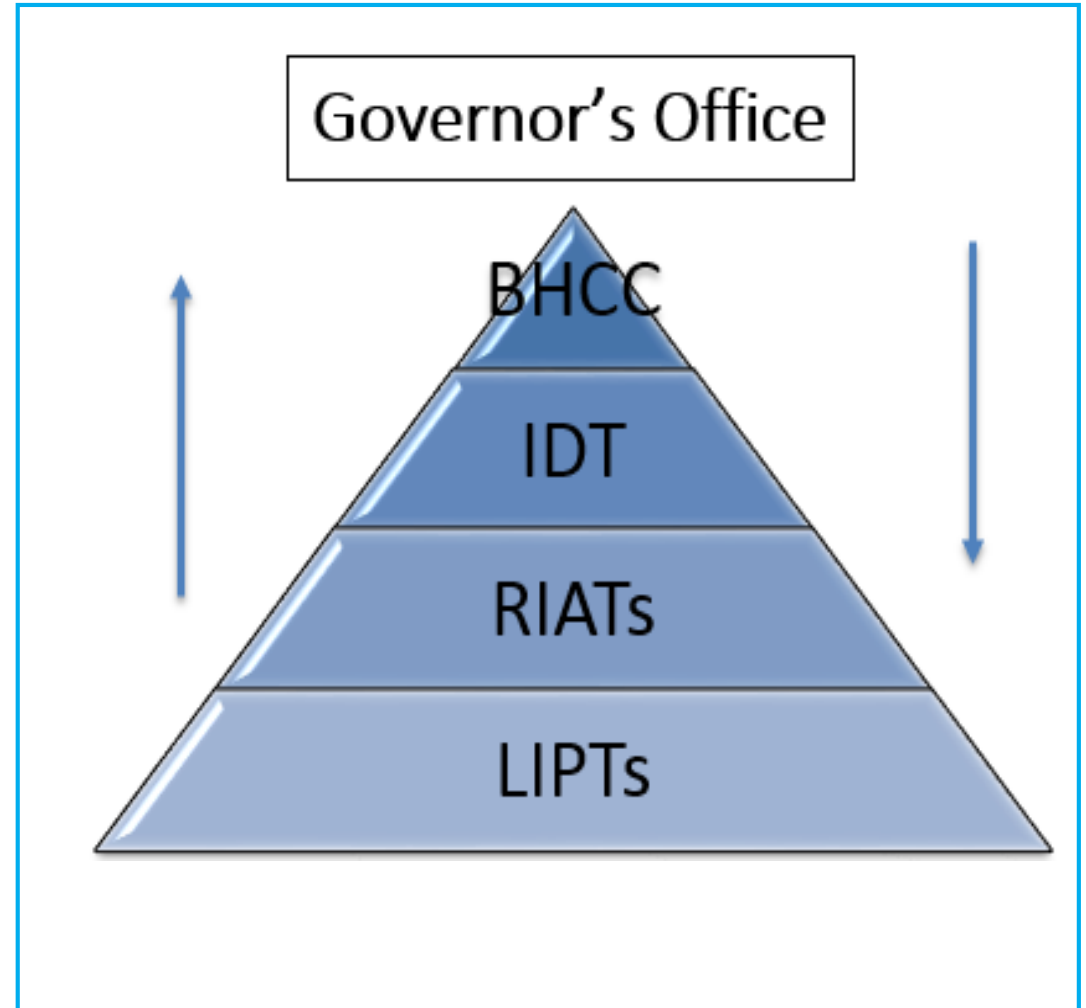
The
Commission
on Children's
Mental Health

11th Annual
System of
Care
Academy

System of Care Values, Principles, and Infrastructure

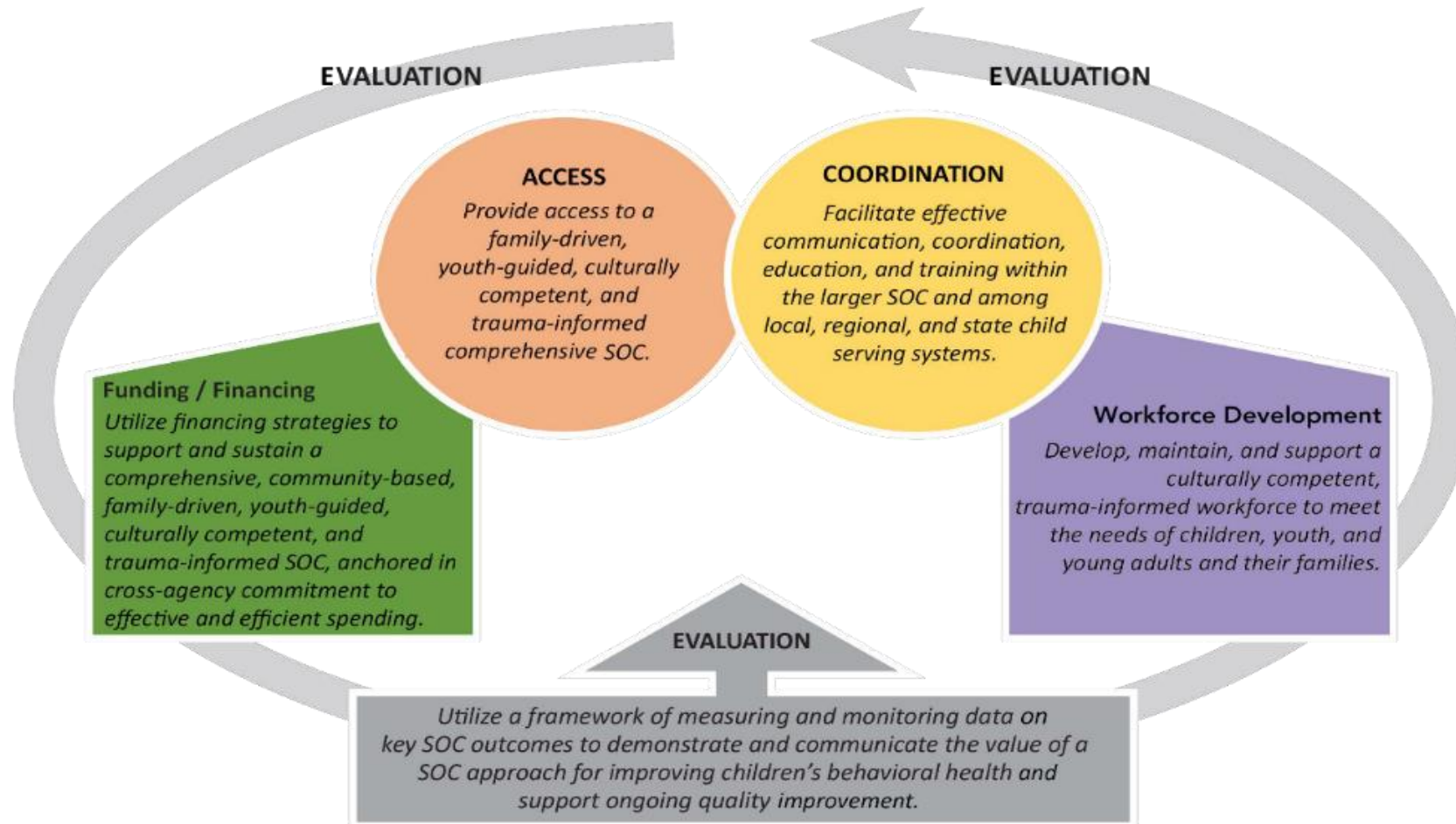
SAMHSA:

- Spectrum of effective, community-based services and supports,
- Organized into a coordinated network that:
- Builds meaningful partnerships with families and youth; and
- Addresses cultural and linguistic needs, in order to improve functioning at home, in school, in the community.



Georgia System of Care State Plan – 5 Focus Areas

SOC Plan Development: Areas of Influence / Goals



System of Care State Plan Updates

1

IDT members have been working diligently to advance the SOC State Plan work

- Each of the 12 SOC State Plan strategies has a subgroup
- IDT members have joined each subgroup
- Multiple subgroups meetings have been held for the various SOC State Plan strategies

2

Currently planning for Year 2 implementation

SOC State Plan Updates

1.2

Establish baseline measure of schools that have access to all 3-tiers of SBMH services

- The subgroup has collected data from more than 900 school counselors on the school based mental health services available in schools via an online survey; COE will present report of baseline data to IDT soon

1.3

Improve family/youth ability to navigate the current system

- Conducted baseline scan of available resources, got feedback from subgroup membership and drafted navigation documents and resource guides for presentation to IDT

1.4

Increase use of intensive customized care coordination (IC3) services

- Subgroup has chosen baseline measures to track use; measures approved by IDT in April; currently drafting report

SOC State Plan Updates

1.8

Georgia behavioral health telemedicine map

- Defined telemedicine / set parameters for what to include in map; used CMS and Medicaid definitions as base; reviewed current telemedicine map; collected data sources from partner agencies and DCH claims; currently cleaning data; draft maps ready for IDT in June

Improving SOC coordination

2.1,2,3

- Drafted communications protocol and plan between LIPTs and state; multiple cultural competence trainings conducted with LIPT chairs; SOC training presentation being finalized; SOC pocket guide and care coordination definition approved by IDT

SOC State Plan Updates

3.2

Establish a clearinghouse for evidence-based practices (EBP)

- Scope of and inclusion

3.4

State mental health workforce plan

- Crosswalk of IDT member agency / organization trainings created; presented recommendations for joint trainings at April IDT meeting; final workforce development crosswalk report is being finalized for delivery to the BHCC

4.3

SOC guiding principles in contract development

- Sample SOC paragraph (for all relevant agency contracts) approved by IDT for presentation to BHCC
- Created “model” core contract measures for SOC principles that interested agencies may follow

SOC State Plan Updates

4.4

SOC financing report updates

- COE presented DBHDD's SFY2017 SOC financing report to IDT and gathered initial feedback; subgroup to discuss updates or changes to the financing report in detail this month

5.1,2

SOC Evaluation

- Subgroup has developed recommendations and discussion points to better define the scope and depth of the SOC evaluation; recommended evaluation measures to be presented to IDT in May/June

Commission on Children's Mental Health: Recommendations

- A. Increase access to behavioral services for Georgia's school-aged children by sustaining and expanding the **Georgia Apex Program (GAP)** for school-based mental health (\$4.29M)
- B. Fund **Supported Employment/Supported Education** programs for youth and emerging adults with severe mental illness (\$1.53M)
- C. Provide support for the development and implementation of **additional levels of support** within the behavioral health continuum of care for youth with the highest levels of need (\$10.4M)
- D. Strategically increase **telemedicine infrastructure** capacity for child-serving, community-based, behavioral health provider organizations in order to improve access to children's behavioral health services (\$382K)

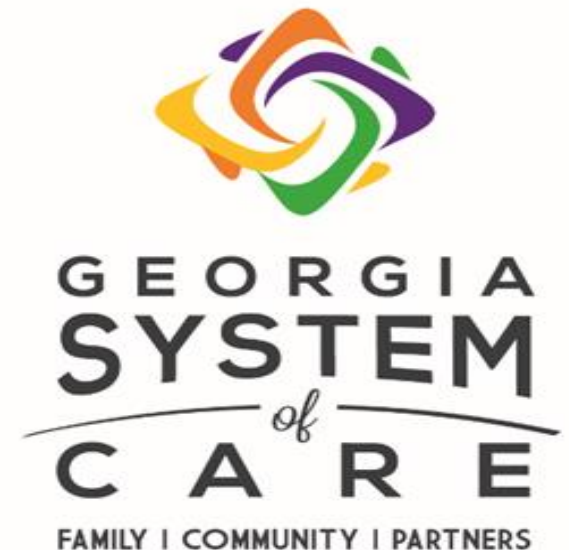
Commission on Children's Mental Health: Recommendations

- E. Invest in **coordinated training** for priority areas of interest and concern for the child-serving workforce (e.g., evidence-based practices, trauma-informed care, administrative practices)
- F. Fund expanded provider training, fidelity monitoring, technical assistance, and evaluation for evidence-based **High-Fidelity Wraparound** (\$610K)
- G. Support multi-pronged early intervention and prevention approaches to **combat the opioid crisis** among Georgia's youth and emerging adults (\$1.09M)
- H. Support multi-pronged **suicide prevention** approach, including the expansion of prevention programming and expansion of Georgia Crisis and Access Line (GCAL) hours, to reduce rising suicide rates among Georgia's youth and emerging adults (\$1.41M)

11th Annual System of Care Academy

**Atlanta Evergreen Marriott Conference Resort
Stone Mountain
June 20-22, 2018**

Quality Workshops
Innovative Speakers
Network with Peers
Strengthen Professional Relationships
Meet Youth & Families
Share Best Practices



Behavioral Health Coordinating Council Transition–Reentry Committee

Co-Chair Terri Timberlake, Ph.D.

Director

Office of Adult Mental Health

Division of Behavioral Health

DBHDD

Co-Chair Michelle Stanley

Deputy Director

Office of Reentry Services

Field Operations Division

DCS



D·B·H·D·D

Georgia Department of Behavioral Health
& Developmental Disabilities

Focus of Transition-Reentry Committee

- 1 Access to Respect Institute speakers for partnering agencies
- 2 Forensic Peer Mentor Program
- 3 Employment for returning citizens
- 4 Housing access
- 4 Family Reunification Project

Returning Citizens with Behavioral Health Classification

Returning citizens who paroled from the Georgia Department of Corrections back into the community with mental health classification levels 2, 3, and 4

February 2018		March 2018		April 2018	
Level 2	147	Level 2	145	Level 2	166
Level 3	20	Level 3	12	Level 3	21
Level 4	4	Level 4	3	Level 4	3

Forensic Peer Mentor Program

Department of Corrections Facilities and Day Reporting Centers

5 State Prisons

- Lee Arrendale, Pulaski, Baldwin, Phillips State Prison, Rutledge

6 Day Reporting Centers

- Atlanta, Columbus, Gainesville, Griffin, Morrow, Rome

Georgia Regional Hospital-
Atlanta Forensic Unit

Program Outcome Highlights

- **74** returning citizens enrolled at GDC facilities fiscal year to date
- **124** returning citizens enrolled at DRC facilities fiscal year to date
- “Prison to Purpose” video

Forensic Peer Mentor Program

Recidivism/Re-arrest

Psychiatric hospital readmission post-release YTD	Re-arrest/ Conviction post-release YTD
2	3 re-arrest 2 re-convictions 1 parole/probation revocation

Program Outcome Highlights

Community Based Referral and Linkages YTD

Behavioral Health services	214
Employment assistance	482
Housing	123
Primary Health	223

Transition-Reentry Committee

Employment for Returning Citizens

Development of employer council with focus on:

- Employer education and awareness:
- Bonding
- Tax benefits
- Maximize GVRA and DOL services for this population

Family Reunification Initiative

Returning Citizens

Family focused, peer facilitated multi-session project:

- Returning citizens and their families/support networks
- Improving communication
- Strengthen family support
- Supporting successful transition into the community

Pilot sites: Metro State Prison, Phillips and Lee Arrendale State Prisons

Supported Housing

Collaboration with Department of Corrections to increase access to supported housing for eligible returning citizens

- Quarterly training presentation to GDC mental health counselors (approximately 60 in March)
- Training for GDC multifunctional officers (June)
- Presentation for Georgia Public Defender Council (March)
- Seeking to expand DBHDD provider enrollment in RPH program
- Data sharing of those in need of and eligible for supported housing

Challenges:

- Housing outreach coordinator access to prisons
- Returning citizens release prior to transition planning
- Criminal history

Commissioner's Report

Judy Fitzgerald
Commissioner

2009 – 2019: A Decade of Transformation Serving Georgia's Most Vulnerable Citizens

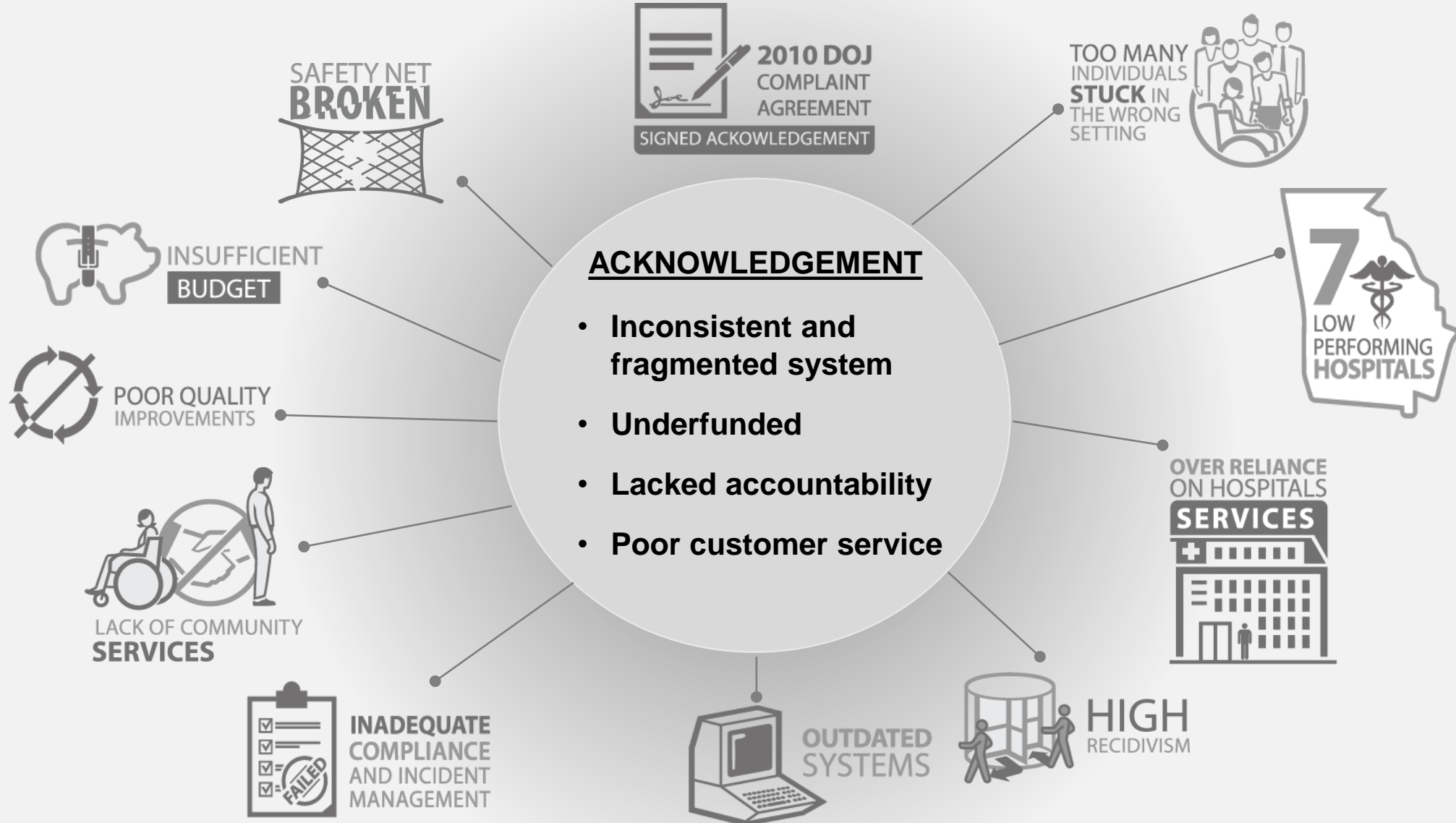
Georgia Department of Behavioral Health & Developmental Disabilities

BE **D·B·H·D·D**

Judy Fitzgerald
Commissioner



Then: 2009...A New Department is Formed



Transformation: Telling OUR Story



Our Transformation: Enterprise

COMMITMENT

New Vision and Mission

INVESTMENT

Established ASO

- Procure and Implement Infrastructure Engine

ADJUSTMENT

Reorganization

- Functional Alignment, Centralization, Creation of DAC and PMQI

ENGAGEMENT

Partnerships

- Traditional and Non-traditional, Providers, Advocates, Stakeholders, Consultants

DEVELOPMENT

Project Management Approach

ENHANCEMENT

IT Investments and Tools; Analytics and Efficiencies

IMPROVEMENT

Culture Change

- New Staff Orientation, Management Academy, Strengths Deployment Inventory, Brand Refresh

Our Transformation: Hospital

COMMITMENT

Closed Front Door for I/DD; Closed Two Hospitals

INVESTMENT

Investment in Facilities
• Furniture Refresh, etc.

ADJUSTMENT

Front-line Pay Raise

ENGAGEMENT

System-wide Key Performance Indicators (KPIs)

DEVELOPMENT

Instituted Governing Body for Improved Oversight

ENHANCEMENT

New Treatment Malls at Each Hospital

IMPROVEMENT

Successful Emergency Response through Two Hurricanes

Our Transformation: Intellectual and Developmental Disabilities

COMMITMENT

Re-designed the COMP Waiver Program

INVESTMENT

Rate Adjustments

- Rate Study, Rate Increase, Flex Rates to Meet Individual Need

ADJUSTMENT

Re-designed Process of Transition from Hospital to Community

ENGAGEMENT

Established Office of Health and Wellness

- Clinical Oversight, High Risk Surveillance, HC Plans, Nursing Standards

DEVELOPMENT

Enhanced Network

- Nutrition, HC Partners, Allied Health, Behavior Supports

ENHANCEMENT

Overhauled Support Coordination

- Role Change, Implement Intensive Support Coordination

IMPROVEMENT

Re-designed the Planning List

Our Transformation: Behavioral Health

COMMITMENT

- Re-designed the Network
- Service Standards, Provider Tiers

INVESTMENT

Developed, Measured, and Monitored Key Performance;
Improved through Analytics

ADJUSTMENT

- Implemented New Community-based Services
- ACT, BHCC, Mobile, Respite, Supported Housing, Supported Employment

ENGAGEMENT

- Clinical Innovation and Leadership
- Symposium, Regional Tours, Beck Institute, Center of Excellence, FEP

DEVELOPMENT

- Georgia Housing Voucher (Need and Choice)
- Housing Outreach Coordinators

ENHANCEMENT

- Enhancement of Georgia's Peer Network
- Forensic, Hospital, Parent, Youth

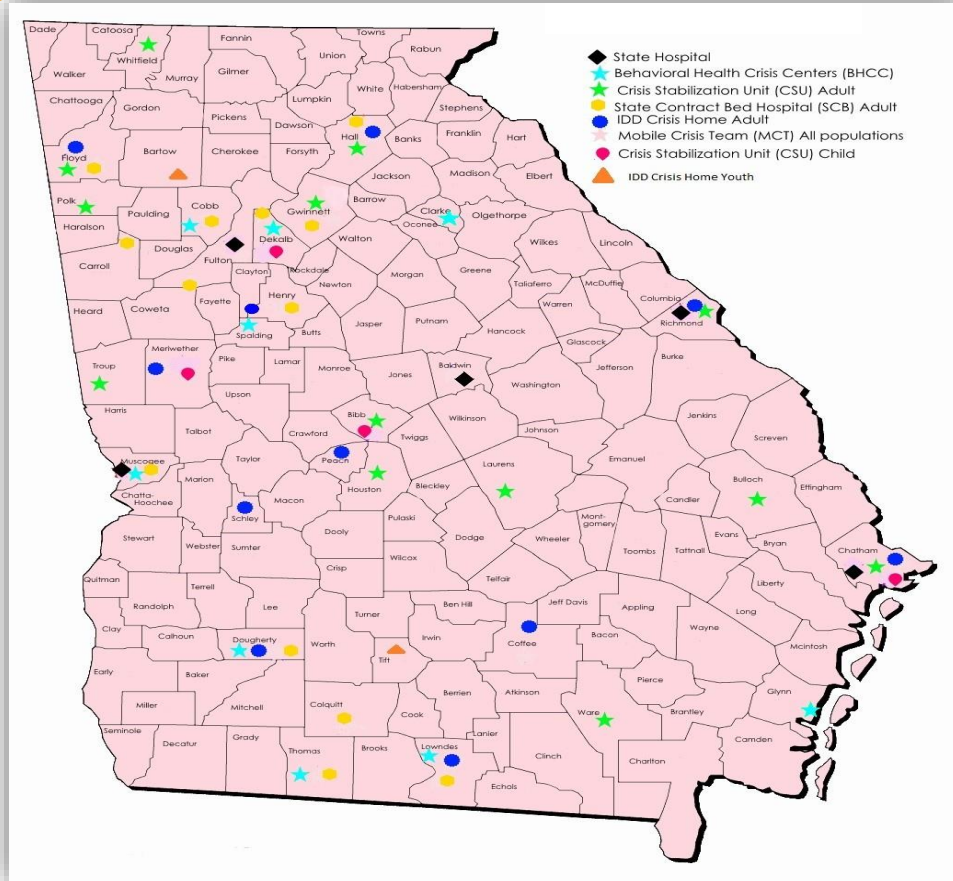
IMPROVEMENT

Centralized Crisis Dispatch and Access to Crisis Care

Top 10 Measureable Achievements

10

Right Sizing of Budget and Beds—Crisis Services



9

Implement KPIs
Measure and Improve Access

REDUCTION IN THE LENGTH OF TIME IT TAKES TO SCHEDULE ASSESSMENT APPOINTMENTS

**2018:
NEW REQUIREMENT
1 DAY OR LESS**

**2017:
1.1
DAYS**

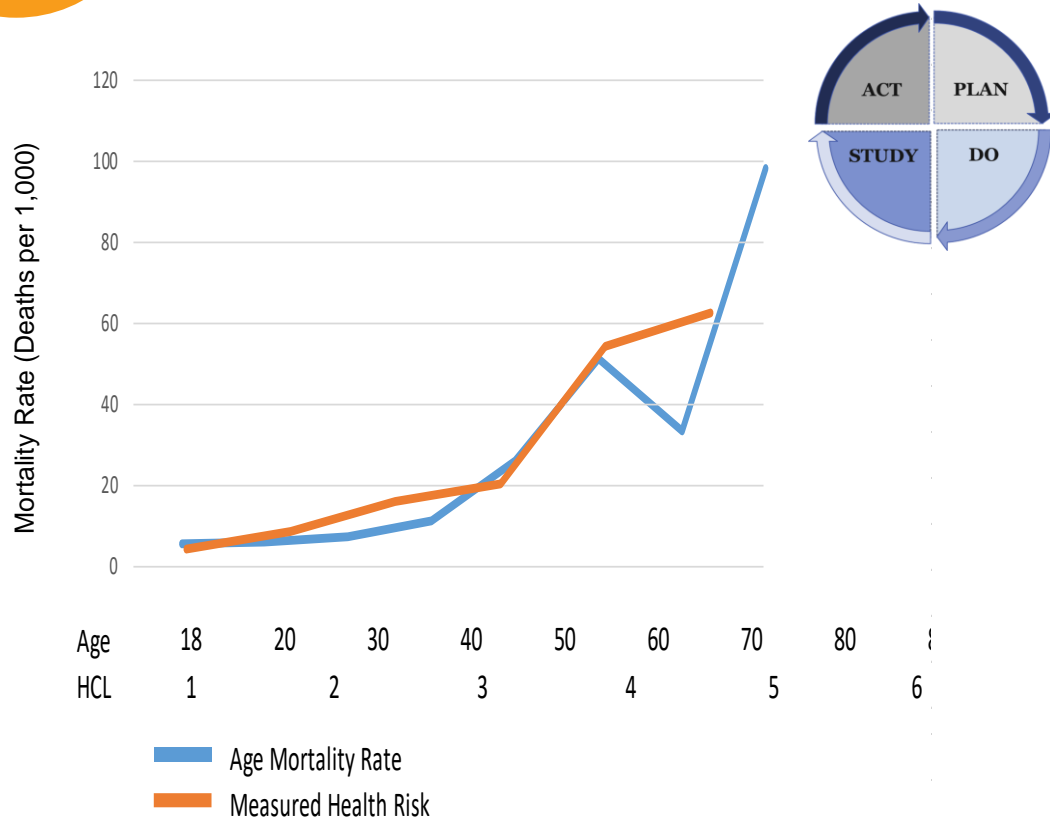
**2016:
1.8
DAYS**



Top 10 Measureable Achievements

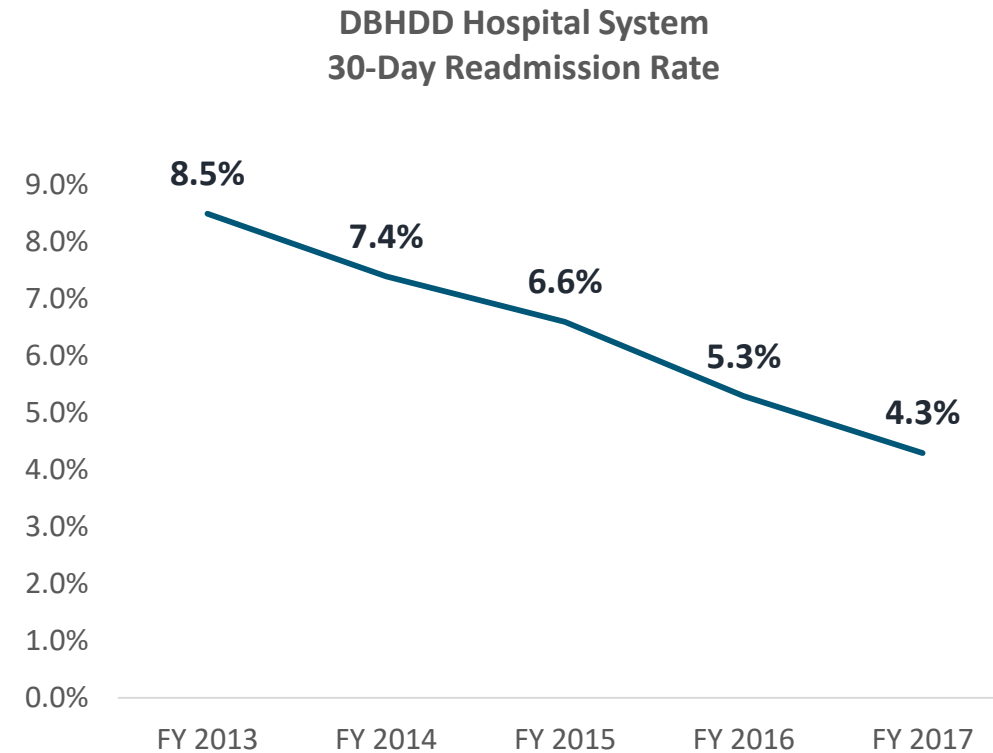
8

Mortality Report with Quality Improvement Strategies



7

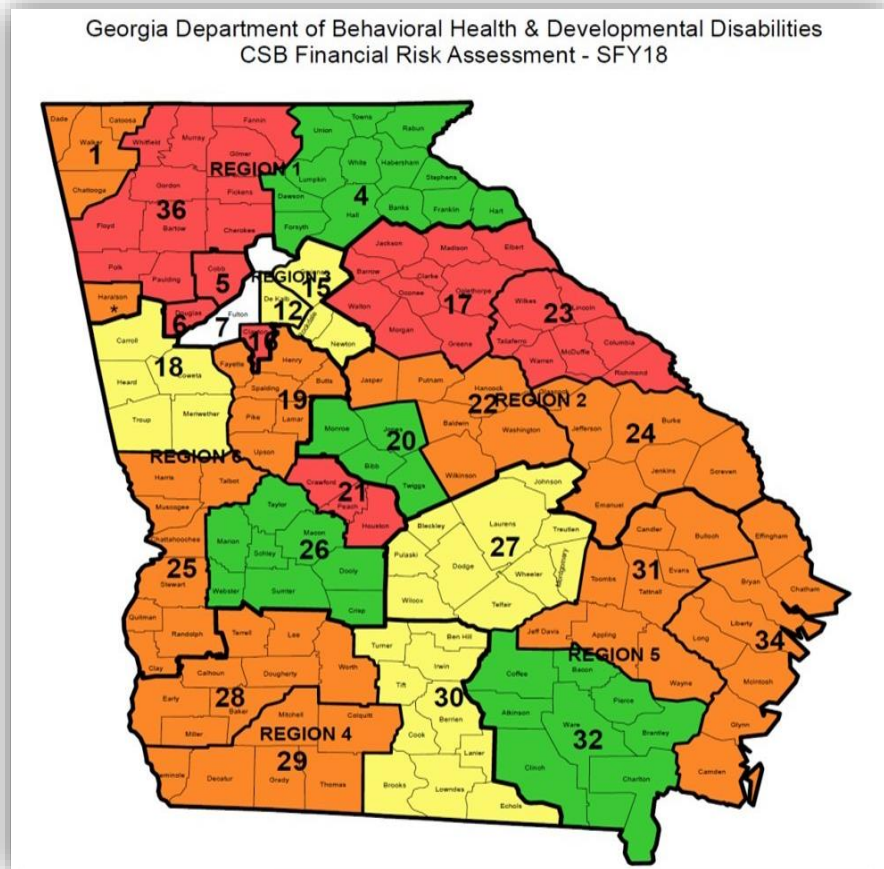
Investment in Hospital Facilities and Services—Reduction in Hospital Recidivism



Top 10 Measureable Achievements

6

Creation of Risk Map for Safety Net in FFS/Transparency and Accountability in Safety Net



5

Successful Georgia Housing Voucher Program



2,628

INDIVIDUALS WITH CURRENT SIGNED LEASES



4,446

INDIVIDUALS RECEIVED BRIDGE FUNDING AND GEORGIA HOUSING VOUCHER

Top 10 Measureable Achievements

4

Mobile Crisis

77,247

I/DD and BH
MOBILE CRISIS
DISPATCHES
TO DATE

96%

DD MOBILE CRISIS
DISPATCHES
RESOLVED IN
HOME/COMMUNITY

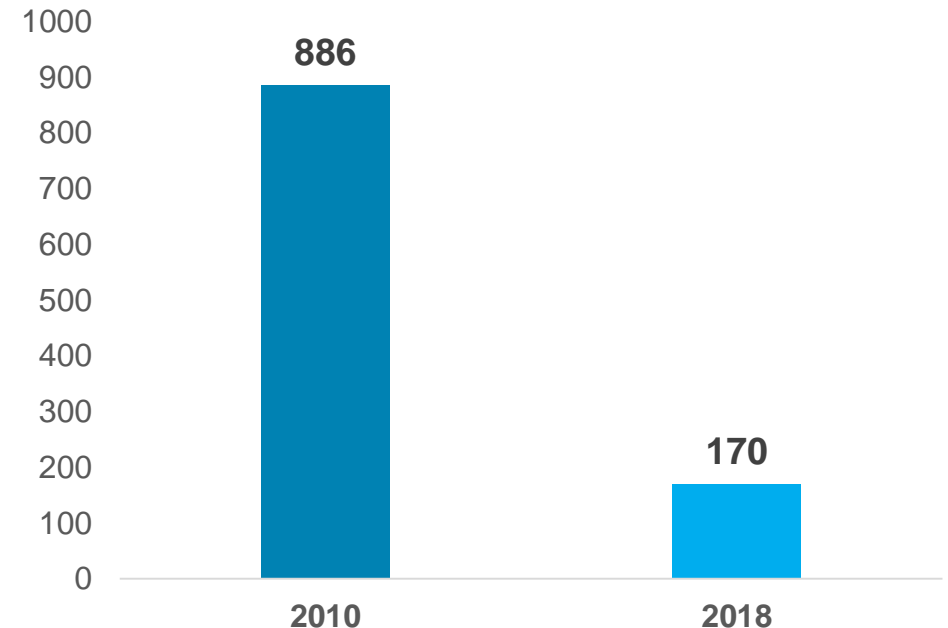
NO ESCALATION
IN CRISIS SYSTEM PLACEMENT

61% OF BH MOBILE CRISIS DISPATCHES

3

Census Change of Individuals
with I/DD in State Hospitals

Number of I/DD Individuals in
State Hospitals



Top 10 Measureable Achievements

2 \$256 Million Investment



1 High Performing Agency—
Increased Credibility



HIGH
PERFORMING
AGENCY

Advancement: Beyond Compliance — Looking to 2019

Urgent and critical priorities warrant additional focus and development



Outpatient “Core” Funding

Increasing demand; Growing population; Treating before crisis



Opioid Crisis

Increasing access; Reduce overdose deaths; Prevention, Treatment, and Recovery



Crisis Support

Integrating, enhancing, and expanding crisis services; Meeting current and addressing forecasted need



Children and Youth Services

Implementing Children’s MH Commission report; Developing innovative programming; Collaborating with child-serving partners



Prevention

Establishing sustainable prevention programs across the lifespan (Suicide Prevention, SU Prevention, MH Promotion)



I/DD Transitions: Planning List and Hospitals

Implementing 5-year plan: Addressing current needs and anticipating future demand; Continue hospital transitions



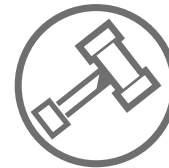
Whole Health for BH and I/DD Population

Coordinating BH and I/DD services within health care system; Promoting the overall well-being of the individual



Value-Based Purchasing

Preparing the network for alternative payment mechanisms; Rewarding positive outcomes



Forensic Population

Ensuring viable facilities and workforce; Addressing growing population of individuals involved with court systems



Aging Population

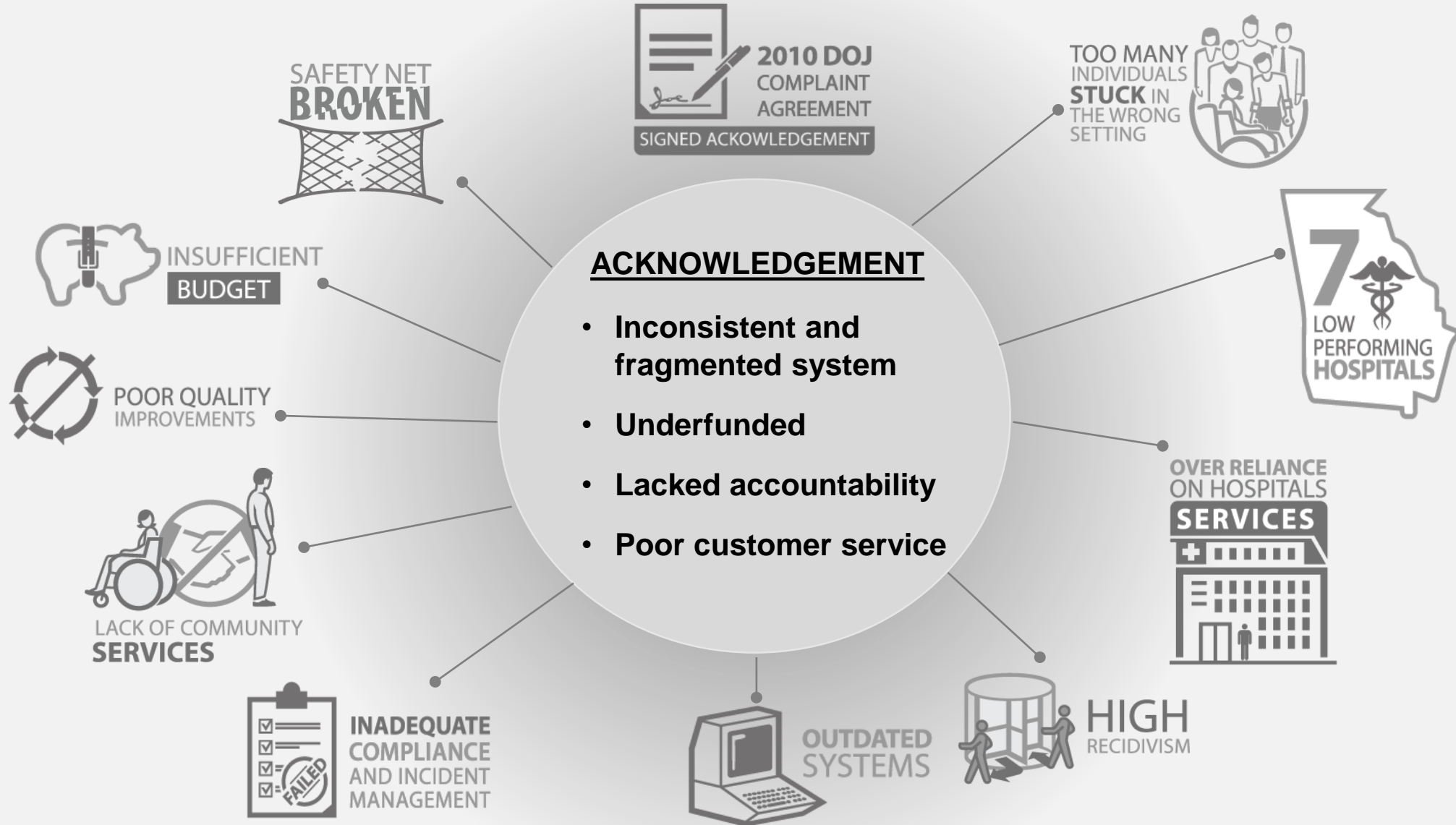
Facing clinical and fiscal challenges resulting from aging individuals and caregivers



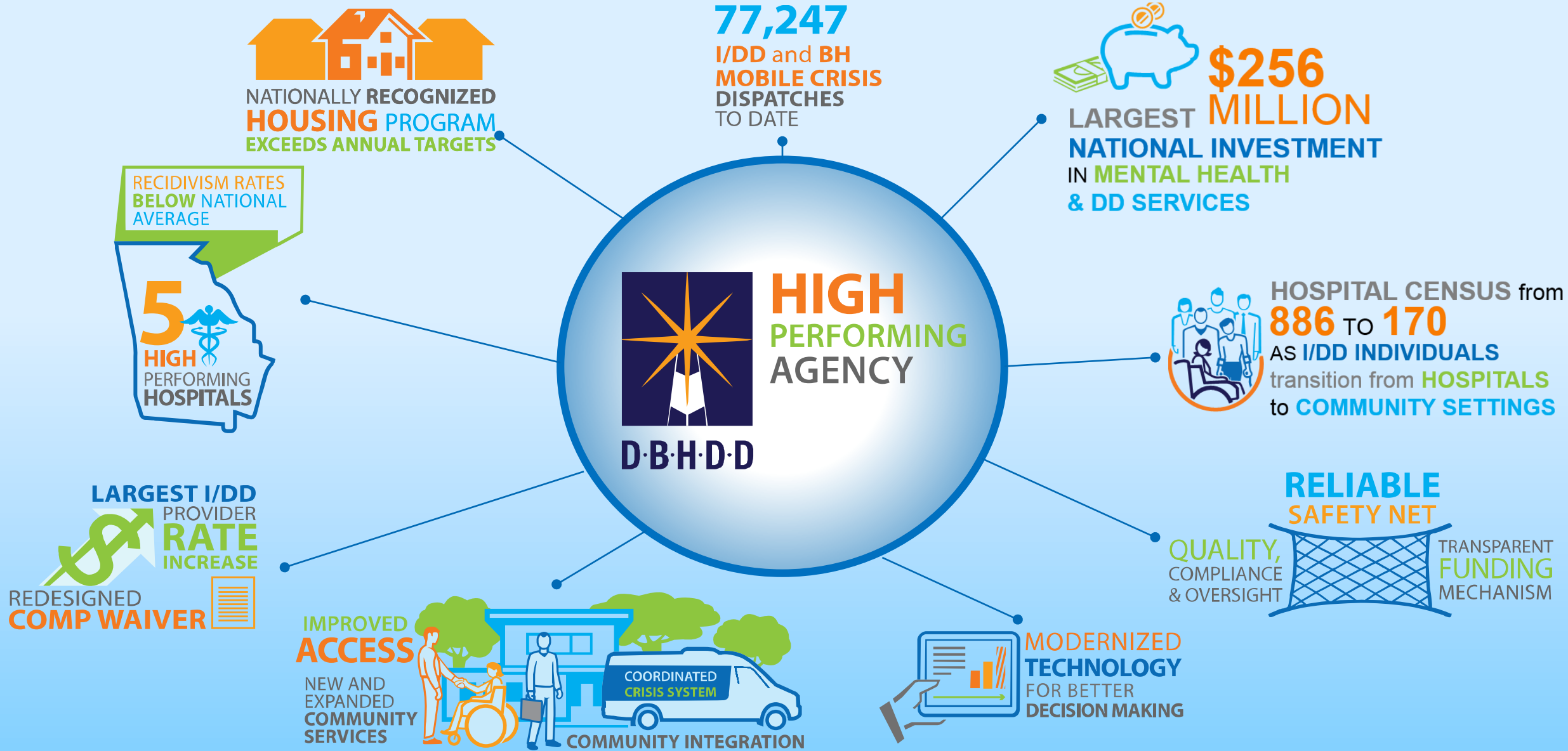
National Workforce Shortage

Developing short- and long-term strategies; Address impact on Georgia with particular attention to rural areas

Then: 2009...A New Department is Formed



Now: OUR ACHIEVEMENT



Next Board Meeting

Wednesday, August 15, 2018
10:00 a.m.



BE **D·B·H·D·D**

Georgia Department of Behavioral Health & Developmental Disabilities



D·B·H·D·D